

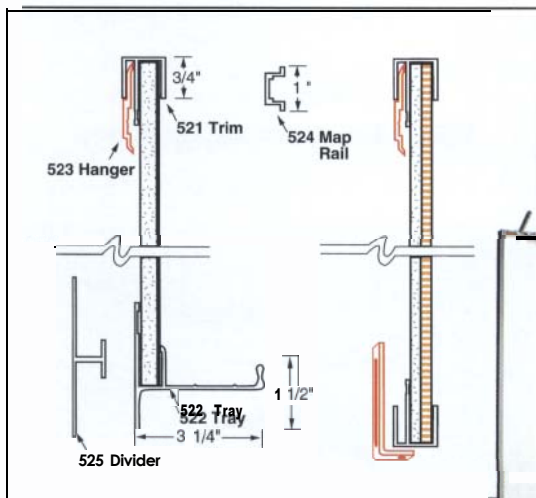
TRIM SECTIONS

Field Assemble Models

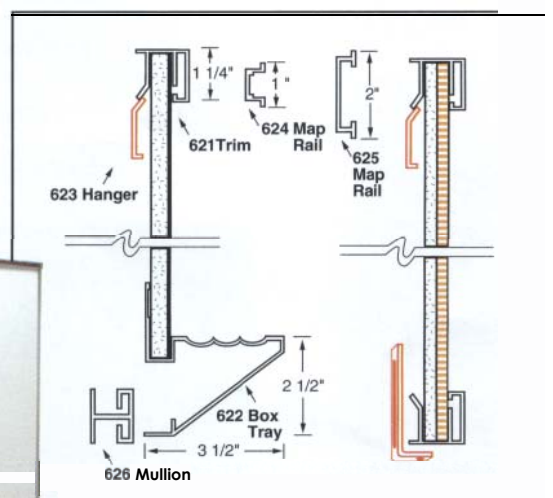
Combine four standard designs with any facing and substrate found on pages 2 and 3. All trim, chalk-trays and map rails are satin anodized in silver, bronze or black. On series 10-520, 10-620 and 10-720, the trim and map rails are factory attached. Chalktrays and

concealed mounting hangers are shipped separately in full length and mounted to the wall surface first. Boards are simultaneously placed over the top hangers and inserted into the chalktray. On series 10-820, "Snap-on" Trim, all trim and boards are shipped unassembled. Fabricating is done on site. The maximum continuous length is 24'. The minimum thickness of any aluminum section is .065. One 'L' bracket is supplied for every 3' of board where necessary.

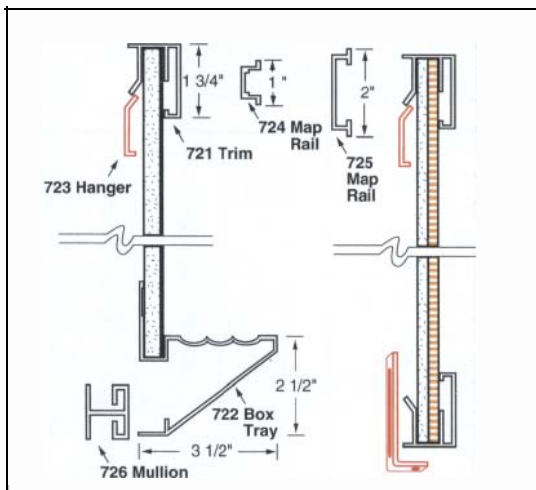
Series 1 O-520 Deluxe Channel Trim



Series 1 O-620 Slip-On Trim



Series 1 O-720 Deluxe Slip-On Trim



Series 1 O-820 Snap-On Trim

