



10-2100

FREE STANDING AND WALL MOUNTED DISPLAY CASE

No. 10-2100, 10-2200 and 10-2300

Features:

- Tempered Glass End Panels
- Tempered Glass Sliding Doors
- Three Tempered Glass Shelves
- Adjustable Shelf Brackets
- Showcase Lock(s)
- Optional Fluorescent Lights w/Diffuser
- Wood Grain Rear Panel
- Satin Anodized Aluminum Trim



10-2200



10-2300

DELUXE RECESSED DISPLAY CASES

These heavy duty units are constructed of satin anodized aluminum angle and channel sections on all frames tracks and door trim. Doors roll smoothly on brass sheaves.

Back panels offer a variety of different materials including: Vinyl Impregnated Cork, Designer fabric, burlap-weave vinyl and natural cork. See page(s) 2 and 3 for specifications and colors. Note: additional materials and color selections are available upon request.

The optional interior box is constructed of 3/4" MDF which is shipped "KD" and is easily assembled on site.



Standard depth is 16". Inside surfaces are oak laminate.

All glass doors and shelves are tempered glass. Door(s) are securely locked with concealed "push-button" locks. Sizes range from 48" x 48" to 78" x 144".

Optional features include:

- UV- Fluorescent lighting
- Header panel with personalized inscriptions
- Hardwood and laminate interiors
- Bronze anodized aluminum.

Custom sizes and shapes available upon request.

Series 10-2000

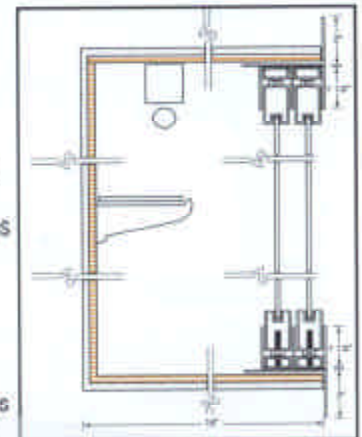


Figure 2