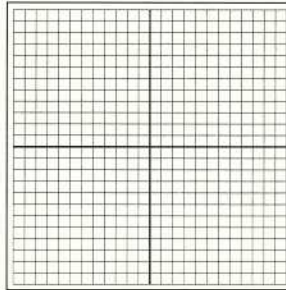


### POLAR COORDINATES

- 12 concentric circles on 1-7/8" centers
- Lines to circumference 15" apart
- 45" outside diameter
- X & Y axis 1/8" (option in yellow ink)



### GRAPH COORDINATES

- Line thickness 1/32"
- X & Y axis 1/8" (option in yellow ink)
- 1-7/8" grid
- 1/4" border all edges



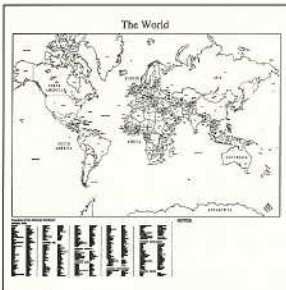
### USA MAP

- Line thickness on map 1/64" and 3/32"
- Lines to circumference 15" apart
- States and capitals listed



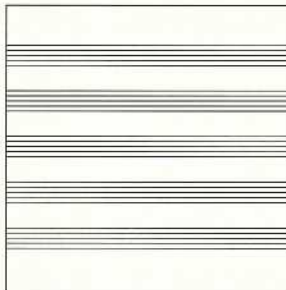
### PENMANSHIP LINES

- Top & bottom solid lines 4" apart
- 2" broken middle line
- 4" border at top & bottom
- Line thickness 1/16"
- 1/4" border vertical edges



### WORLD MAP

- Line thickness on map 1/64" and 3/32"
- Continents, countries, and capitals listed



### MUSIC STAFF LINES

- 5 lines each staff
- 1" between each line, 5" between each staff
- 4" border at top & bottom
- Line thickness 1/16"
- 1/4" border vertical edges

(1" GRIDS AND 2" HORIZONTAL LINES NOT SHOWN, SEE CHART BELOW FOR SIZES.)

## GRAPHICS SPECIFICATION CHART



GRAPHIC IMAGES	MARKERBOARD COLORS	CHALKBOARD COLORS	4' X 4'	4' X 6'	4' X 8'	4' X 10'
Penmanship Lines	White (1)	Green (2)		x	x	x
Music Staff Line	White (1)	Green (2)		x	x	x
USA Map	White (1)	N/A	x			
World Map	White (1)	N/A	x			
1" x 1" Grid	White (1)	N/A			x	
2" Horizontal Lines	White (1)	N/A			x	
Polar Coordinates	White (1)	Green (2)	x			
Graph Coordinates	White (1)	Green (2)	x			

### FRAMES



TRADITIONAL SERIES



TRADITIONAL PLUS SERIES



CONTOUR SERIES

Graphics are available in the Traditional, Traditional Plus, and Contour Frame Series (Contour Series not available in 4' x 10'). Graphics are at an upcharge of \$10/sq. ft. from standard board price.

### SURFACE COLORS



WHITE (1)



GREEN (2)

### GRAPHICS COLORS



BLACK



WHITE

White graphics are available on green chalkboards.

Black graphics are available on markerboards.



See inside cover for more details on our Forever Surface Warranty.