

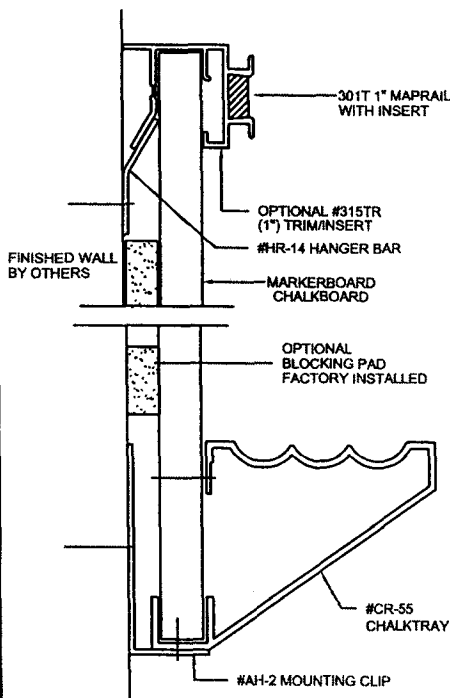
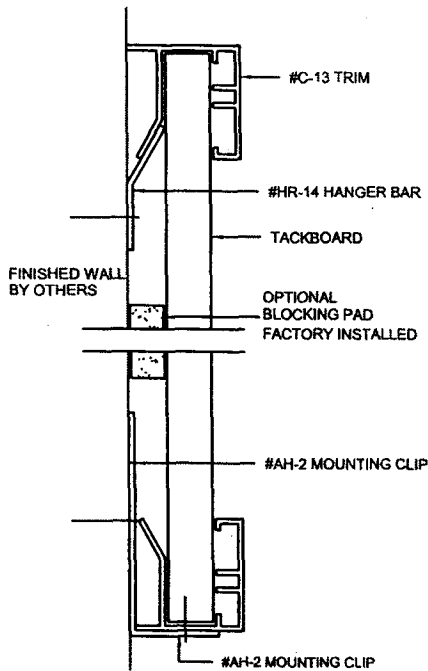
210 SERIES

DRY MARKERBOARD
CHALKBOARD OR TACKBOARD

SUGGESTED INSTALLATION INSTRUCTIONS FOR 210 SERIES MARKER, CHALK & TACK BOARDS

Note: Complete installation hardware is included with each unit. If wall construction prevents the use of hardware as furnished, it is the responsibility of the customer to furnish the required fasteners.

1. Verify sizes, colors & quantity of units delivered with units ordered. Contact the dealer or sales office where purchased to report any discrepancies.
2. Determine locations and mounting height above finish floor (AFF). Level and strike chalkline at this point.
3. Fasten AH-2 mounting clips to wall with suitable anchors. Hold clips at center of slot and secure firmly so bottom edge of clip lines up with the chalkline.
4. From bottom of chalkline, measure a line equal to the height of the unit and level and strike a chalkline at this point.
5. Mark a line from top chalkline 2" down and strike a chalkline at this point level.
6. Position HR-14 hanger bar along this line & drill $\frac{1}{4}$ " holes through hanger bar and through wall @ 16" or 24" o.c. On sheetrock walls, put fasteners at locations of studs and insert plastic plugs.
7. Fasten HR-14 hanger bar to wall with suitable anchors.
8. Lift unit so top trim member engages with HR-14 hanger bar.
9. Tap bottom AH-2 clips upward until they touch the trim or chalktray.
10. Screw $\frac{1}{2}$ " long #8 tek screws up through holes in bottom clips and through trim member.
11. Inspect writing surface of markerboards and chalkboards for protective polyfilm. Remove if present. Wash all dry markerboards and chalkboards prior to use.



Indoff

140 WEST WYND TERRACE
MIDDLETOWN, CT 06457

(860) 632-2026

FAX (860) 632-2028

www.ahutton.com

CHECK US OUT ONLINE AT: