

## KNOCKED DOWN UNITS

DRY MARKERBOARD, CHALKBOARD OR  
TACKBOARD

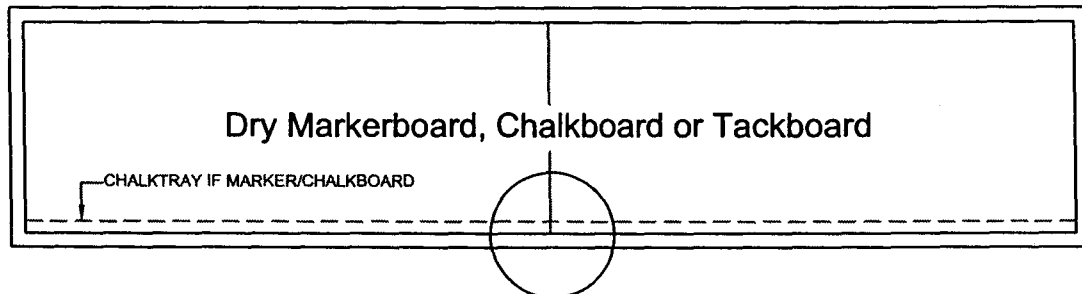
### SUGGESTED INSTALLATION INSTRUCTIONS FOR KNOCKED DOWN BOARDS

1. Knocked down pre-fab dry markerboard, chalkboard & tackboard units are shipped in two or more sections with the display rail and jamb trim attached and the spline or h-bar inserted or attached to one of the unit sections. The chalktray and cork insert on the markerboard and chalkboard are separate and in one piece. The unit sections and chalktray are marked (ex: Unit 1, Unit 2, etc.) for ease of assembly. Depending on series, tray may be shipped loose or attached to board sections.

*For units such as 100, 153, 500 & 510 attach trays to the wall.*

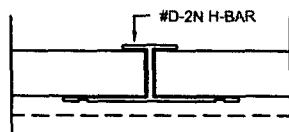
2. On units with trays attached, the sections should be tapped together making sure the top trim and the bottom of the board are aligned correctly. Once the sections have been butted together properly, the chalktray and display rail may be attached to the unit with the fasteners provided. *Note: The board and chalktray are already pre-drilled. Push the cork insert into the display rail. The unit is now ready to be mounted on the wall.*

**Note:** These units have been assembled at the factory to assure correct alignment. Be sure to match the numbers on the back of each section and chalktray.



If tackboard:

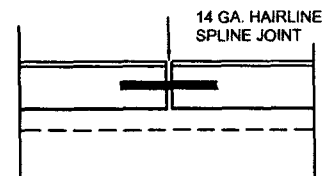
(H) H-BAR DETAIL



NOTE: H-BAR MAY BE  
VINYL OR FABRIC  
COVERED

If markerboard  
or chalkboard:

(S) SPLINE DETAIL



CHECK US OUT ONLINE AT:

**Indoff**

140 WEST WYND TERRACE  
MIDDLETOWN, CT 06457  
(860) 632-2026  
FAX (860) 632-2028  
[www.ahutton.com](http://www.ahutton.com)