

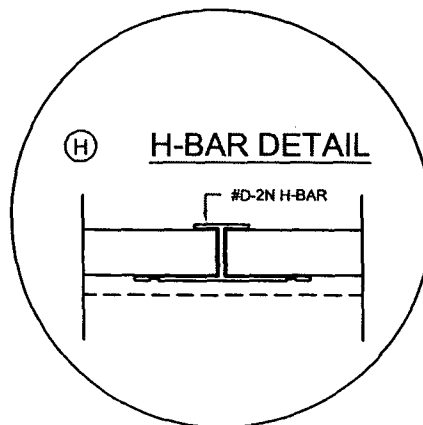
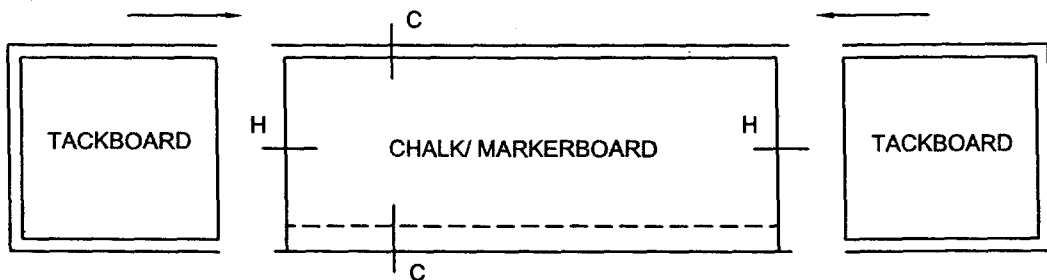
KNOCKED DOWN COMBO UNITS

DRY MARKERBOARD, CHALKBOARD OR
TACKBOARD

SUGGESTED INSTALLATION INSTRUCTIONS FOR KNOCKED DOWN COMBINATION UNITS

1. Knocked down combination pre-fab units are shipped in two or more sections with the display rail and jamb trim attached and the h-bar attached to one of the unit sections. The chalktray and cork insert on the markerboard and chalkboard are separate and in one piece. The unit sections and chalktray are marked (ex: Unit 1, Unit 2, etc.) for ease of assembly.
2. The sections should be tapped together making sure the top trim and the bottom of the board are aligned correctly. *Note: The board and chalktray are already pre-drilled. Push the cork insert into the display rail. The unit is now ready to be mounted on the wall unless it is a 100 or 500 series board in which case the tray will be mounted to the wall and the board needs to be placed onto the wall to complete assembly.*

Note: These units have been assembled at the factory to assure correct alignment. Be sure to match the numbers on the back of each section and chalktray.



CHECK US OUT ONLINE AT:

Indoff
140 WEST WYND TERRACE
MIDDLETOWN, CT 06457
(860) 632-2026
FAX (860) 632-2028
www.ahutton.com