

RECESSED MOUNT HDC & SDC DISPLAY CASE

SUGGESTED INSTALLATION INSTRUCTIONS FOR RECESSED DISPLAY CASES

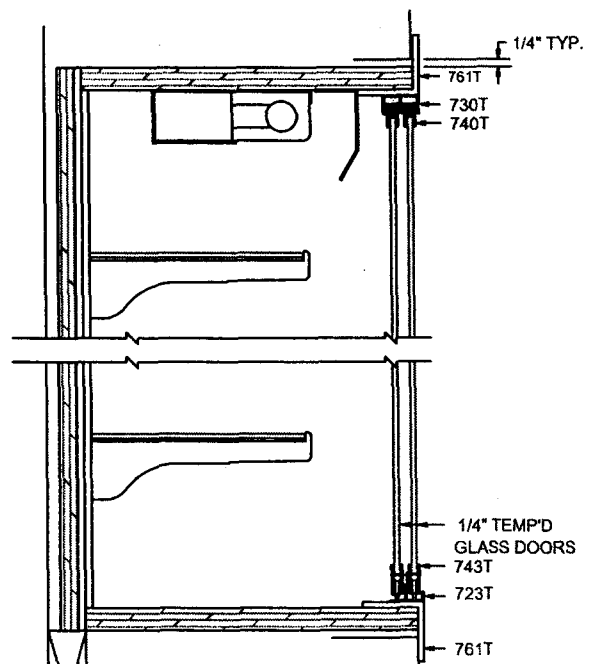
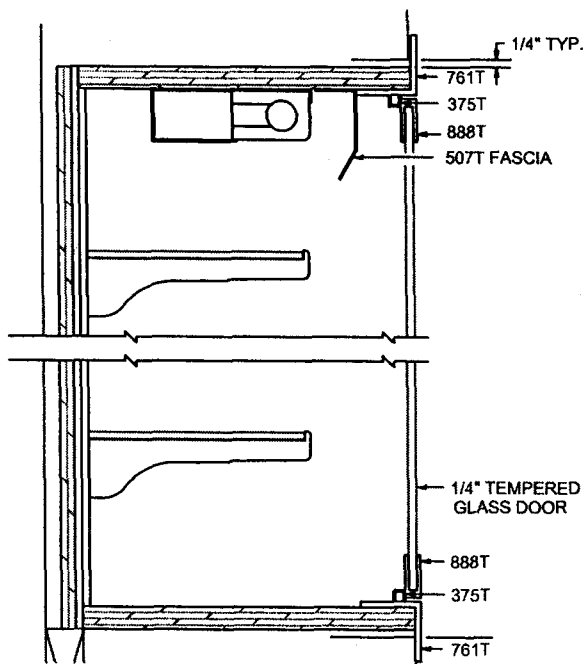
Note: Complete installation hardware is included with each unit. If wall construction prevents the use of hardware as furnished, it is the responsibility of the customer to furnish the required fasteners.

1. Check opening to make sure it is square and true before installing case.
2. Shim opening on all sides $\frac{1}{4}$ " for case.
3. Insert case into opening.

Note 3a: For hinged door units, drill and countersink case frame behind doors all four sides.

3b: For sliding door units, drill and countersink case frame behind or through door track all four sides.

4. Drill through frame and case boxes into wall.
5. Secure case with flat head screws.
6. To install sliding doors: Push top of door up into track and insert the bottom of the door into the lower track.



CHECK US OUT ONLINE AT:

Indoff

140 WEST WYND TERRACE
MIDDLETOWN, CT 06457

(860) 632-2026
FAX (860) 632-2028
www.ahutton.com