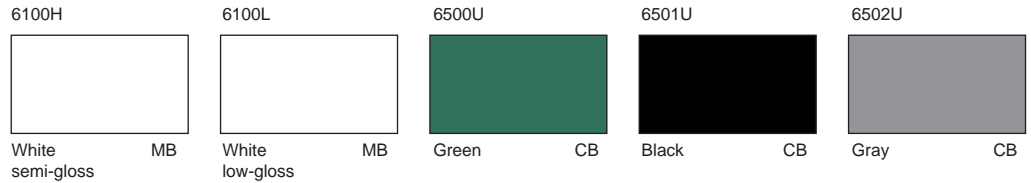


Finally, permanent screenprinted graphics on demand!

For over a decade PolyVision has produced the only fused, ceramic graphics that are as indestructible as they are functional. Screenprinted ceramicsteel is ideal for the conference or board room, the office or workstation, and of course, the classroom or training facility. PolyVision is dedicated to expanding the application of our high performance ceramicsteel writing surfaces and providing solutions for our customers' presentation and instructional needs.

Markerboard and Chalkboard colors



The colors shown on this catalogue sheet are representative only. Actual samples will be provided upon request.

Markerboard Specification Chart

Ceramicsteel Graphic Images	Colors Available	Cut Sheet Sizes			
		48" x 48"	48" x 72"	48" x 96"	48" x 120"
Penmanship Lines	6100H		6100H01652	6100H00652	6100H00332
	6100L		6100L01652	6100L00652	6100L00332
Music Staff Lines	6100H		6100H02242	6100H00242	6100H00682
	6100L		6100L00682	6100L00242	6100L0068A2
USA Map	6100H	6100H03442			
	6100L	6100L03442			
World Map	6100H	6100H03452			
	6100L	6100L03452			
1" x 1" Grid	6100H			6100H00602	
	6100L			6100L00602	
2" Horizontal Lines	6100H			6100H11042	
	6100L			6100L11042	
Polar Coordinates	6100H	6100H0034B2			
Graph Coordinates	6100H	6100H0035C2			

Chalkboard Specification Chart

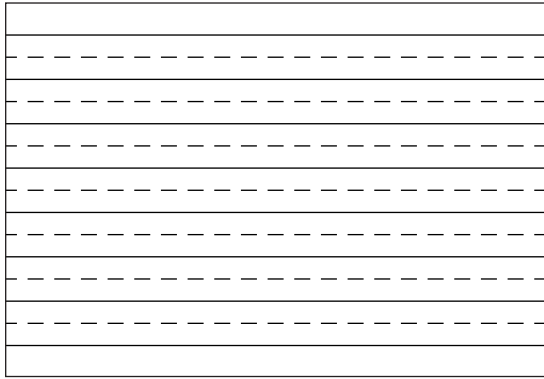
Ceramicsteel Graphic Images	Colors Available	Cut Sheet Sizes			
		48" x 48"	48" x 72"	48" x 96"	48" x 120"
Penmanship Lines	6500U		6500U01651	6500U00651	6500U00331
	6501U		6501U01651	6501U00651	6501U00331
	6502U		6502U01651	6502U00651	6502U00331
Music Staff Lines	6500U		6500U02241	6500U00241	6500U0068B1
	6501U		6501U02241	6501U00241	6501U00681
	6502U		6502U02241	6502U00241	6502U00681
USA Map					
World Map					
1" x 1" Grid					
2" Horizontal Lines					
Polar Coordinates	6500U	6500U0034B1			
	6502U	6502U0034B1			
Graph Coordinates	6500U	6500U0035C1			
	6502U	6502U0035C1			

Individual Graphic Images

PolyVision maintains an inventory of the designs most often in demand. Select your size and color from the largest inventory of the most specified graphic designs. Please reference the 10 or 11 digit part number when ordering.

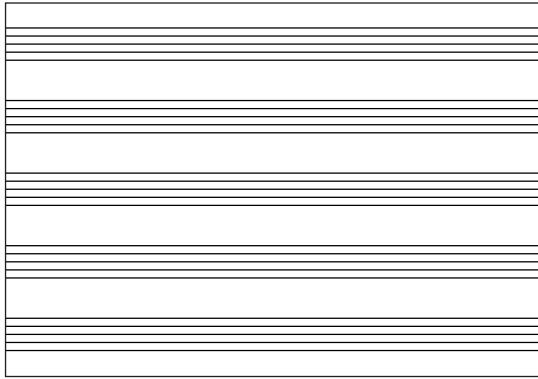
FEATURES AND BENEFITS

- Permanently fused graphics with sharp contrast
- Fused onto *P³ ceramicsteel™* surface
- Durable: wear and scratch resistant
- Easy to write and erase
- Easy to clean and maintain
- Uniform color consistency
- High impact resistance
- Graffiti proof
- UV resistant
- Accepts all magnetic components



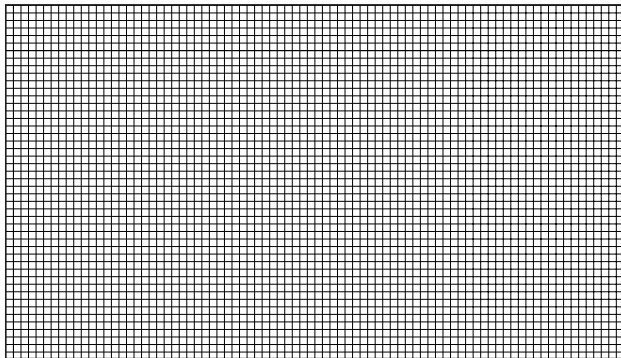
Penmanship Lines:

- Top & Bottom solid lines 4" apart
- Broken middle line in center (2")
- 4" border at top and bottom
- Line thickness 1/16"
- 1/4" border vertical edges



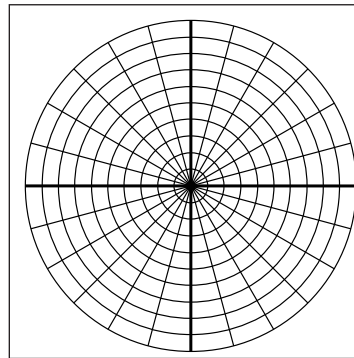
Music Staff Lines:

- 5 lines each staff
- 1" between each line
- 5" between each staff
- 4" border at top & bottom
- Line thickness 1/16"
- 1/4" border vertical edges



1" x 1" Grid:

- Line thickness 1/32"
- 1/4" border all edges



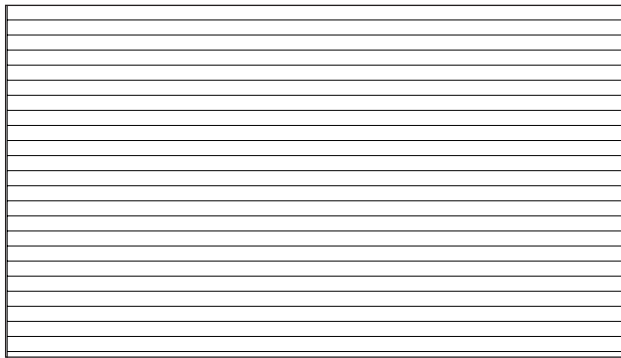
Polar Coordinates:

- 12 concentric circles on 17/8" centers
- Lines to circumference 15° apart
- 45" outside diameter
- X & Y axis 1/8" (option in yellow ink)



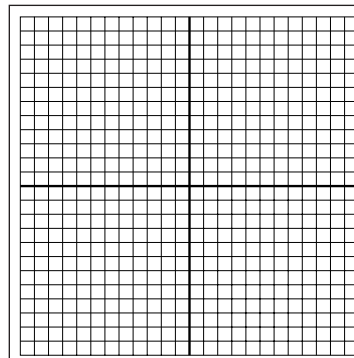
USA Map:

- Line thickness on map 1/64" and 3/32"
- Detail: States and Capitals listed



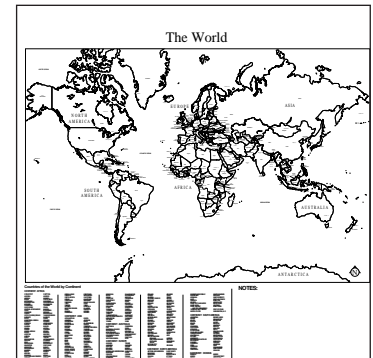
2" Horizontal Lines:

- Line thickness 1/32"
- 1/4" border all edges



Graph Coordinates:

- Line thickness 1/32"
- X & Y axis 1/8"
- 1/4" border all edges (option in yellow ink)
- 17/8" grid



World Map:

- Line thickness on map 1/64" and 3/32"
- Detail: Continents, Countries, and Capitals listed

POLYVISION™
A Steelcase Company

©2002 PolyVision Corporation. All rights reserved.
"P³ ceramicsteel" is a trademark of PolyVision Corporation.

PolyVision Corporation reserves the right to make changes in product design, construction, detail, and to discontinue any product or material without notice.

PolyVision Corporation

ahutton@ahutton.com

Indoff Inc. Ct Branch

www.ahutton.com

(860)632-2026