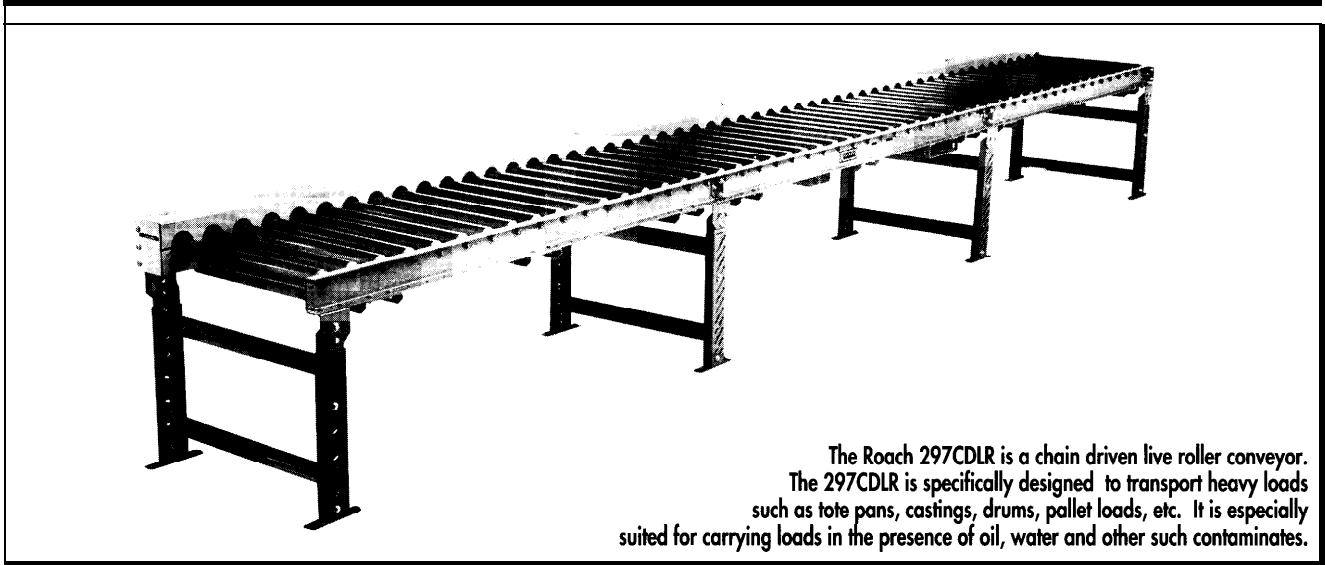


# MODEL 297CDLR HEAVY DUN CHAIN DRIVEN LIVE ROLLER



The Roach 297CDLR is a chain driven live roller conveyor. The 297CDLR is specifically designed to transport heavy loads such as tote pans, castings, drums, pallet loads, etc. It is especially suited for carrying loads in the presence of oil, water and other such contaminants.

## SPECIFICATIONS

TREAD ROLLERS: 2-9/16" dia. x 7 ga.

CHAIN DRIVE: **Roller** to roller with No. 60 roller chain.

CENTER DRIVE: Reversible drive either side mounted or underside mounted (specify). Main drive roller is supported by precision, heavy duty, lubricated, ball bearing units.

ROLLER CENTERS: 4-1/2", 6" or 12" available.

CHAIN GUARD: The chain drive is completely enclosed along the entire length of the conveyor.

SPEED: 35 FPM, constant.

BEARINGS: Removable type, heavy duty ball bearings, zinc-plated, grease packed, labyrinth sealed.

BED: 4" at 5.4 lbs. and 6" at 8.2 lbs. structural steel channel frame. Bed sections attached with couplings and floor supports.

FLOOR SUPPORTS: Underside drive; SH-4, adjustable 18" to 21" TOR.

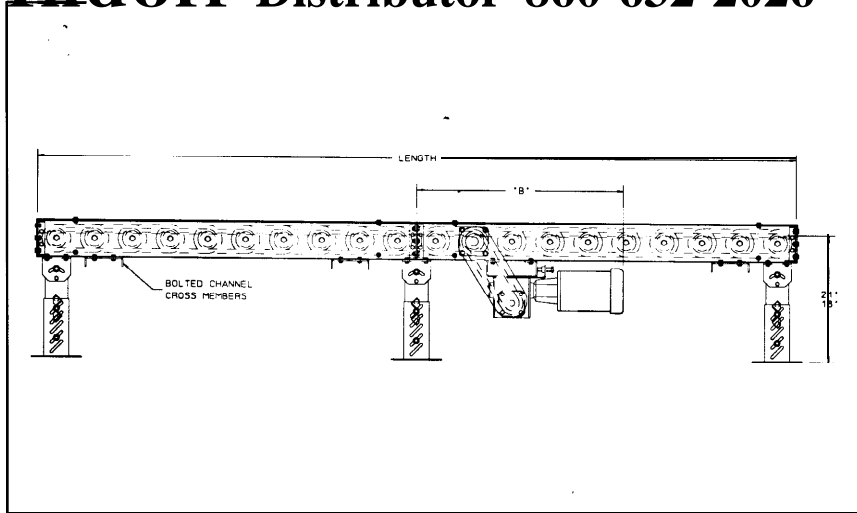
Side Mounted drive; SH-1, adjustable 10-1/2" to 12" TOR.

MOTOR DRIVE: 3/4 HP, 230/460/3, 60 cycle, ODP right angle gear motor.

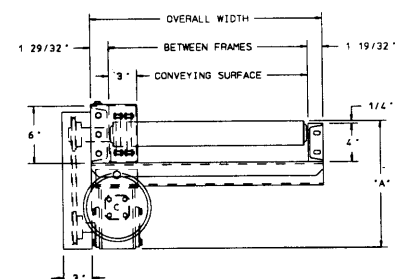
ELECTRICAL CONTROLS: Available as an option.



## Indoff Distributor 860-632-2026



HP @ 35 FPM	REDUCER	"A"	"B"
3/4	RDW13340-02	13-1/8"	38-13/16"
1	RDW13150-01	14-3/4"	39-1/8"
1-1/2	RDW13150-02	14-3/4"	39-1/8"
2	RDW13200-02	16-1/8"	40-13/16"



■ 4 week shipment

**SPECIFICATION TABLE**

CONVEYOR LENGTH		5'	10'	15'	20'	25'	30'	35'	40'	45'	50'	60'	70'	80'
CONV. SURFACE BF		Unit weights (lbs.) with 6" roller centers (for other centers, deduct weights below)												
12"	15"	333	549	766	982	1199	1415	1632	1848	2065	2281	2714	3147	3580
18"	21"	370	618	867	1115	1364	1612	1861	2109	2358	2606	3103	3600	4097
24"	27"	405	684	963	1242	1521	1800	2079	2358	2637	2916	3474	4032	4590
30"	33"	435	738	1042	1345	1649	1952	2256	2559	2863	3166	3773	4380	4987
36"	39"	470	803	1137	1470	1804	2137	2471	2804	3138	3471	4138	4805	5472
42"	45"	504	866	1229	1591	1953	2316	2679	3041	3404	3766	4491	5216	5941
48"	51"	538	929	1321	1712	2104	2495	2887	3278	3670	4061	4844	5627	6410
54"	57"	572	992	1413	1833	2254	2674	3095	3516	3936	4356	5197	6038	6879
60"	63"	607	1057	1508	1958	2409	2859	3310	3760	4211	4661	5562	6463	7364

Deduct the following weights (lbs.) for other than 6" centers

ROLLER C E N T E R S	15" BF		21" BF		27" BF		33" BF		39" BF		45" BF		51" BF		57" BF		63" BF	
	Per 5'	Per 10'	Per 5'	Per 10'	Per 5'	Per 10'	Per 5'	Per 10'	Per 5'	Per 10'	Per 5'	Per 10'	Per 5'	Per 10'	Per 5'	Per 10'	Per 5'	Per 10'
12"	-55	-110	-65	-130	-75	-150	-85	-170	-95	-190	-105	-210	-115	-230	-125	-250	-135	-270

**OPTIONAL EQUIPMENT**

**SPEED:** Constant speed; 25-60 FPM (specify). Other constant or variable speeds available. **NOTE: CAPACITY CHANGES WITH SPEED.**

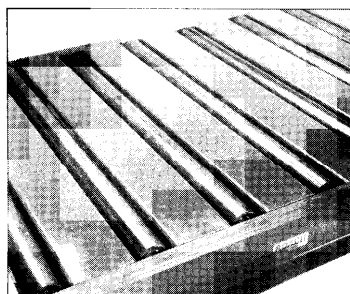
**MOTORS:** Available through 2 HP with characteristics such as totally enclosed, single phase, etc.

**FLOOR SUPPORTS:** Other height supports available, adjustable or fixed.

**ELECTRICAL CONTROLS:** Manual start/stop push button switch; reversing drum switch; magnetic starter (one direction or reversible); limit switch, photo relay; others available.

**LOAD CAPACITY @ 35 FPM**

HP	15" BF - 39" BF		45" BF - 57" BF	
	UP TO 50'	51'-80'	UP TO 50'	
3/4	6050	3700	5150	2800
1	8700	6200	7800	5300
1-1/2	14100	11500	13200	10600
2	19700	17600	18800	16700



Tread plates bridge gap between rollers in gravity conveyors. Consult factory to add optional tread plates if necessary in your application.

**SIDE MOUNTED DRIVE**

