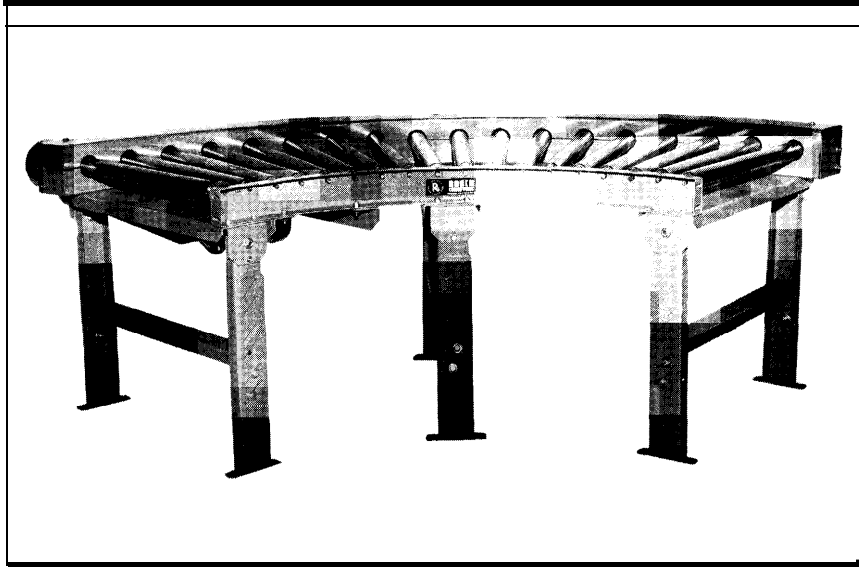


MODEL 192CDLRC MEDIUM DUTY CHAIN DRIVEN LIVE ROLLER CURVE



UNIT			90°		45°	
BF	CONV. SURFACE	O/R	QTY. RLRs.	WT. (lbs.)	QTY. RLRs.	WT. (lbs.)
15"	12"	4'-11"	18	339	—	—
21"	18"	4'-11"	18	374	—	—
27"	24"	4'-11"	18	409	—	—
33"	30"	8'-1 1/4"	30	543	15	313
39"	36"	8'-1 1/4"	30	586	15	337
45"	42"	8'-1 1/4"	30	633	15	364
51"	48"	8'-1 1/4"	30	681	15	391

SPECIFICATIONS

TREAD ROLLERS: 1.9" dia. x 12 ga.*

CHAIN DRIVE: Roller to roller with No. 50 circular roller chain.

END DRIVE: Reversible drive either side mounted or underside (specify). Main drive roller is supported by precision, heavy duty, lubricated, ball bearing units.

CHAIN GUARD: The chain drive is enclosed, top and bottom, along the entire length of the conveyor.

BED: 5-1/2" x 1-1/2" x 10 ga. and 3-1/2" x 1-1/2" x 10 ga. formed steel channel frame.

SPEED: 45 FPM, constant.

BEARINGS: Removable type, heavy duty bearings, zinc plated, grease packed, labyrinth sealed.

FLOOR SUPPORTS: Adjustable 28"-40" TOR. Supports can be lagged to floor.

MOTOR DRIVE: 1/3 HP, 230/460/3, 60 cycle, ODP right angle gear motor.

DIRECTION OF FLOW: Specify right to left or left to right.

ELECTRICAL CONTROLS: Optional.

*NOTE: Orientation of product may be affected because of straight rollers in curve. To maintain orientation, use tapered roller curve.

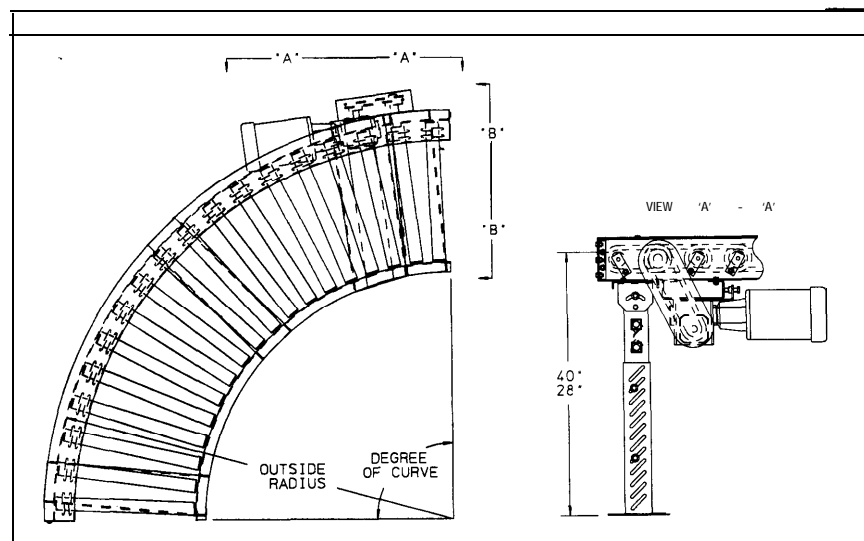
OPTIONAL EQUIPMENT

FLOOR SUPPORTS: Other supports available, adjustable or fixed.

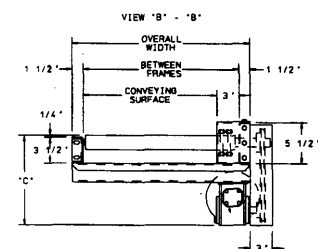
SPEED: Constant speed; 25-60 FPM (specify). Other constant or variable speeds available. NOTE: CAPACITY CHANGES WITH SPEED.

MOTORS: Available through 2 HP with characteristics such as-totally enclosed, single phase, etc.

ELECTRICAL CONTROLS: Manual start/stop push button switch; reversing drum switch; magnetic starter (one direction or reversible); limit switch; photo relay; others available.



HP 6 45 FPM	REDUCER	"C"
1/3	RDW12340-02	12"
1/2, 3/4	RDW 12340-02	12"
1	RDW12155	12-5/8"
1-1/2	RDW12150	14- 1/4"
2	RDW12150-02	

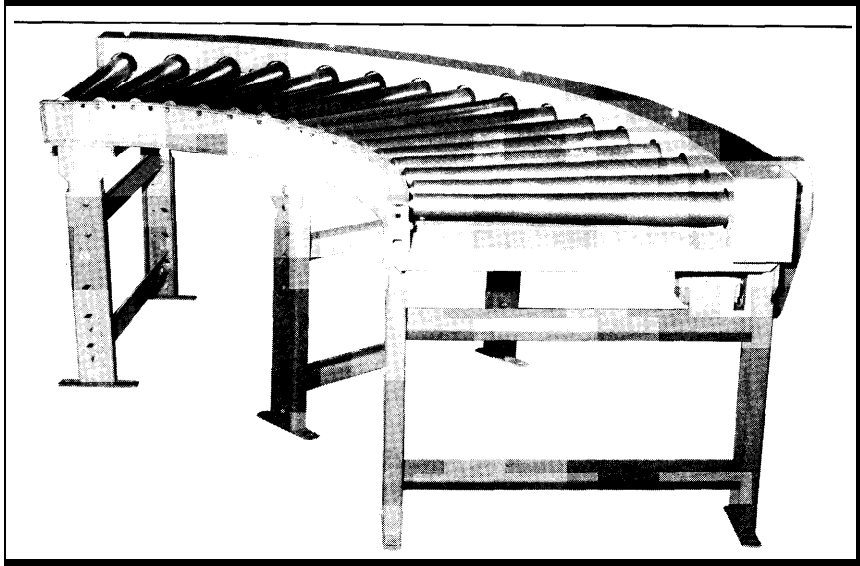


Indoff Distributor 860-632-2026

■ 4 week shipment



MODEL 254TCDLRC
MEDIUM DUTY TAPERED ROLLER CHAIN DRIVEN LIVE ROLLER CURVE 65



UNIT			90°		45°	
BF	CONV. SURFACE	O/R	QTY. RLRs.	WT. (lbs.)	QTY. RLRs.	WT. (lbs.)
15"	12"	5-21/2"	16	344	12	208
21"	18"	5-21/2"	16	372	12	225
27"	24"	5-21/2"	16	403	12	243
33"	30"	7-9/4"	24	447	12	263
39"	36"	7-9/4"	24	486	12	310
45"	42"	7'-9 1/4"	24	528	12	334

SPECIFICATIONS

TREAD ROLLERS: 2-1/2" dia. x 14 ga. tapered rollers.

CHAIN DRIVE: Roller to roller with No. 60 circular roller chain.

END DRIVE: Reversible drive, side mounted or underside (specify). Main drive roller is supported by precision, heavy duty, lubricated, ball bearing units

ROLLER CENTERS: 6" RC measured at outside radius of curve,

CHAIN GUARD: The chain drive is enclosed, top and bottom, along the entire length of the conveyor.

SPEED: 45 FPM, constant.

BED: 6"x 1-1/2"x 10ga. and 4" x 1-1/2" x 10 ga. formed steel channel frame.

BEARINGS: Removable type, heavy duty bearings, zinc plated, grease packed, labyrinth sealed.

FLOOR SUPPORTS: Adjustable 28"-40" TOR. Supports can be lagged to floor.

MOTOR DRIVE: 1/3 HP, 230/460/3, 60 cycle, ODP right angle gear motor.

DIRECTION OF FLOW: Specify right to left or left to right.

ELECTRICAL CONTROLS: Optional.

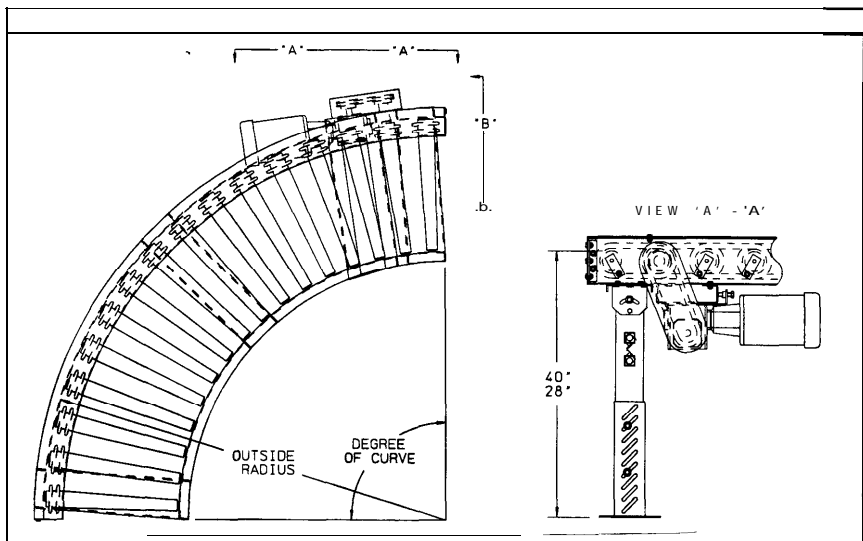
OPTIONAL EQUIPMENT

FLOOR SUPPORTS: Other height supports available, adjustable or fixed.

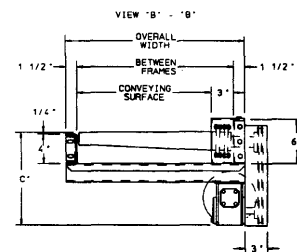
SPEED: Constant speed; 25-60 FPM (specify). Other constant or variable speeds available. NOTE: CAPACITY CHANGES WITH SPEED,

MOTORS: Available through 2 HP with characteristics such as totally enclosed, single phase, etc.

ELECTRICAL CONTROLS: Manual start/stop push button switch; reversing drum switch; magnetic starter (one direction or reversible); limit switch; photo relay; others available.



HP @ 45 FPM	REDUCER	"C"
1/3	RDW17100-02	12-1/2"
1/2, 3/4	RDW17100-02	12-1/2"
1	RDW17100-02	13-1/8"
1-1/2	RDW 17100-04	14-3/4"
2	RDW 17150-02	16-1/8"



4 week shipment