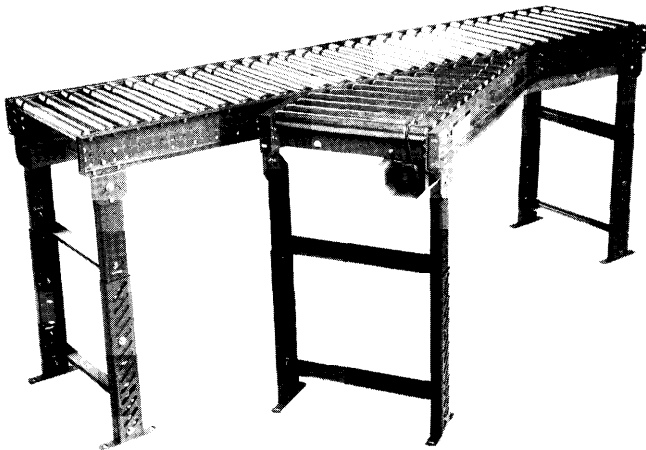


# MODEL 196LSS

## LINE SHAFT CONVERGING SPUR MODULE [ahutton@ahutton.com](mailto:ahutton@ahutton.com)



Line Shaft converging spur modules allow product to flow from spur lines and merge onto straight line shaft conveyor. Economically designed to be driven by 196LS!

BF	15"	19"	21"	25"	27"	33"	39"
SPUR	UNIT WEIGHTS (lbs)						
45"	194	208	218	243	257	358	383
30"	208	222	236	343	362	486	582

### SPECIFICATIONS

**TREAD ROLLERS:** 1.9" dia. x 16 ga. on 3" centers.

**DRIVE BELT:** 3/1 6" dia., polyurethane belts. Nominal 15 tbs. per roller drive.

**DRIVE SHAFT:** 1" dia.; CI 018 cold rolled steel shaft, located on long side of spur.

**COUPLINGS:** Flexible jaw coupling with shock absorbing Hytrel insert, located at all ends or at specified location on end of drive shaft.

**BED:** 4-1/2" x 1-1/2" x 10 ga. formed steel channel frame. Short side of spur is always 12" overall length.

**BEARINGS:** Precision, lubricated, ball bearing units with steel housings.

**FLOOR SUPPORTS:** Adjustable 29"-41" TOR. Supports can be lagged to floor.

**MOTOR DRIVE:** Unit is designed to be driven by 196LS.

**ROLLER CHAIN:** Spur driven via crossover with No. 40 chain.

**ELECTRICAL CONTROLS:** Available as an option.

**NOTE:** Specify "right hand" or "left hand". To determine hand of spur, refer to pg. 4 in technical section.

### OPTIONAL EQUIPMENT

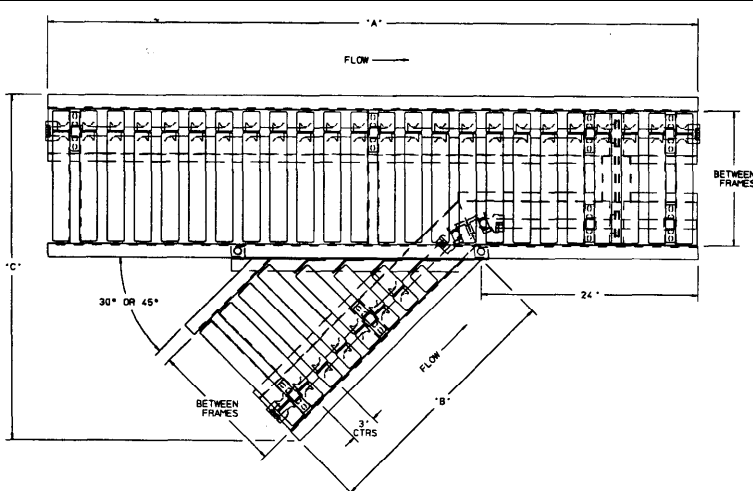
**GUARD RAILS:** Adjustable channel or solid formed steel.

**FLOOR SUPPORTS:** Other height supports available, adjustable or fixed.

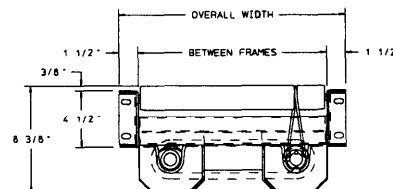
**MOTOR DRIVE:** Available as 2 ft. long 196LS conveyor section in speeds from 30 to 120 FPM,

**ELECTRICAL CONTROLS:** Manual start/stop push button switch; reversing drum switch; magnetic starter (one direction or reversible); limit switch; photo relay; others available, **NOTE: CONTROLS ONLY REQUIRED IF MOTOR DRIVE OPTION ABOVE IS USED,**

## Indoff Distributor 860-632-2026



BF	30° SPUR			45° SPUR		
	"A"	"B"	"C"	"A"	"B"	"C"
1 1/2'	6'	40-7/8"	38-3/8"	6'	20-5/8"	38-1/4"
1 9/16'	8'	47-3/4"	45-7/8"	8'	32-5/8"	45-1/8"
21"	8'	51-1/4"	49-5/8"	8'	34-5/8"	48-1/2"
25"	8'	58-1/8"	57-1/8"	8'	38-5/8"	55-3/8"
27"	8'	61-5/8"	60-3/4"	8'	40-5/8"	58-3/4"
33"	10'	72"	72"	10'	46-5/8"	69"
39"	10'	82-3/8"	83-1/4"	10'	52-5/8"	79-1/4"



■ 4 week shipment