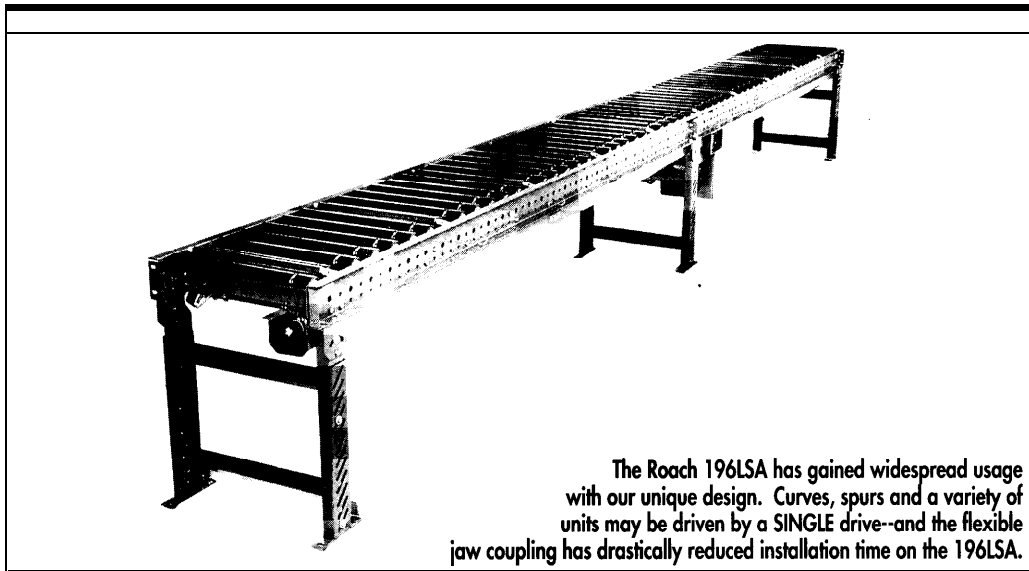


MODEL 196LSA

LINE SHAFT ZERO PRESSURE ACCUMULATOR



SPECIFICATIONS

TREAD ROUERS: 1.9" dia. x 16 ga.

DRIVE BELT: 3/16" dia., polyurethane belts. Nominal 15 lbs. per roller drive.

DRIVE SHAFT: 1" dia.; CI 018 cold rolled steel shaft.

COUPLINGS: Flexible jaw coupling with shock absorbing Hytrel insert, located both ends or one end only (specify).

CENTER DRIVE: Located approximately 16-1/2" from end of bed section on 4" RC; 18" on 3" and 6" RC.

ACCUMULATION: 2'-0" long zones, pneumatically actuated.

SPEED: 60 FPM, constant.

BEARINGS: All bearings are precision, heavy duty, lubricated, ball bearing units with steel housings.

BED: 4-1/2" x 1-1/2" x 10 ga. formed steel channel frame. Bed sections attached with couplings and floor supports.

FRL: Unit is provided with filter, regulator, lubricator with 1/4" ports.

FLOOR SUPPORTS: Adjustable 29"-41" TOR. Supports can be lagged to floor.

ROLLER CHAIN: Drive shaft is driven by No. 50 chain for 1-1/2 HP or less and No. 60 chain on larger drives. Chain take-up provided on motor base.

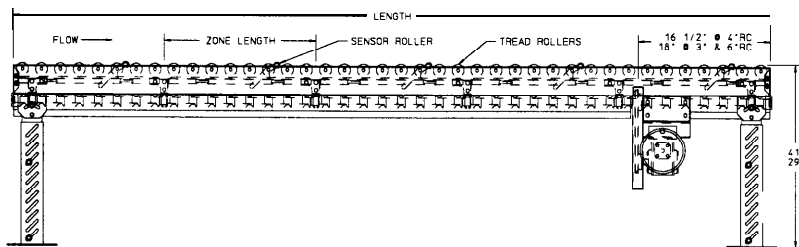
MOTOR DRIVE: 1/3 HP, 230/460/3, 60 cycle, ODP right angle gear motor.

CAPACITY: See page 5 in technical section for load capacity rating.

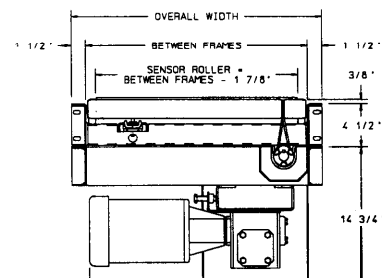
ELECTRICAL CONTROLS: Available as an option.



Indoff Distributor 860-632-2026



HP @ 60 FPM	REDUCER	" " A
1/3, 1/2	RDW1100-02	2 4"
3/4, 1	RDW1100-02	2 4"
1-1/2, 2	RDW1100-04	25-1/4"



SPECIFICATION TABLE

CONVEYOR LENGTH		5'	10'	15'	20'	25'	30'	40'	50'	60'	70'	80'	90'	100'
BF	OAW	Unit weights (lbs.) with 3" roller centers (For other centers, deduct weights below)												
15"	18"	357	541	725	908	1092	1276	1643	2011	2378	2746	3113	3481	3848
19"	21"	377	579	781	983	1185	1387	1791	2194	2598	3002	3406	3810	4213
21"	24"	388	602	816	1029	1243	1456	1883	2310	2737	3164	3591	4018	4445
25"	28"	400	636	873	1110	1347	1583	2056	2530	3003	3476	3949	4423	4896
27"	30"	420	662	910	1158	1406	1654	2151	2647	3143	3640	4136	4632	5129
33"	36"	432	714	997	1280	1563	1846	2412	2977	3543	4109	4675	5241	5806
39"	42"	463	778	1131	1484	1767	2049	2684	3319	3955	4590	5225	5860	6495

Deduct the following weights (lbs.) for other than 3" centers

TREAD ROLLER CENTERS	15" BF		19" BF		21" BF		25" BF		27" BF		33" BF		39" BF	
	Per 5'	Per 10'	Per 5'	Per 10'	Per 5'	Per 10'	Per 5'	Per 10'	Per 5'	Per 10'	Per 5'	Per 10'	Per 5'	Per 10'
4"	-14	-28	-17	-34	-19	-37	-21	-42	-23	-45	-27	-53	-31	-62
6"	-18	-36	-34	-68	-37	-74	-42	-84	-45	-90	-53	-106	-62	-124

OPTIONAL EQUIPMENT

SIDE MOUNTED DRIVE: With 10" minimum elevation.

ACCUMULATION ZONES: 18" and 30" long zones available.

FLOOR SUPPORTS: Other height supports available, adjustable or fixed. Castered supports also available.

CEILING HANGERS: 5/8" dia. threaded rod with hardware to attach rods to conveyor. Provides 6' clearance between ceiling and TOR (furnished in place of floor supports).

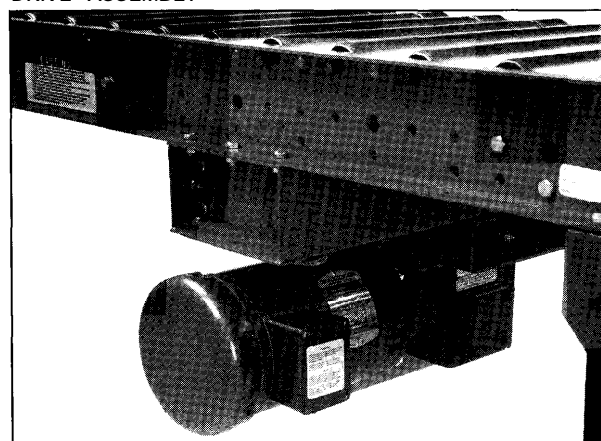
GUARD RAILS: Adjustable channel or solid formed steel.

CONVEYOR SPEED: Constant speed; 30-120 FPM (specify). Other constant or variable speeds available. NOTE: CAPACITY CHANGES WITH SPEED.

MOTORS: Available through 2 HP with characteristics such as totally enclosed, single phase, etc.

ELECTRICAL CONTROLS: Manual start/stop push button switch; magnetic starter (one direction); limit switch; photo relay; others available.

DRIVE ASSEMBLY



A Roach Flite Sortation unit brings tomorrow's technology into today's workplace. Rates up to 150 cartons per minute are no problem for a Roach Flite Sortation System. Packages can be sorted to one or both sides for the ultimate in sortation systems.

