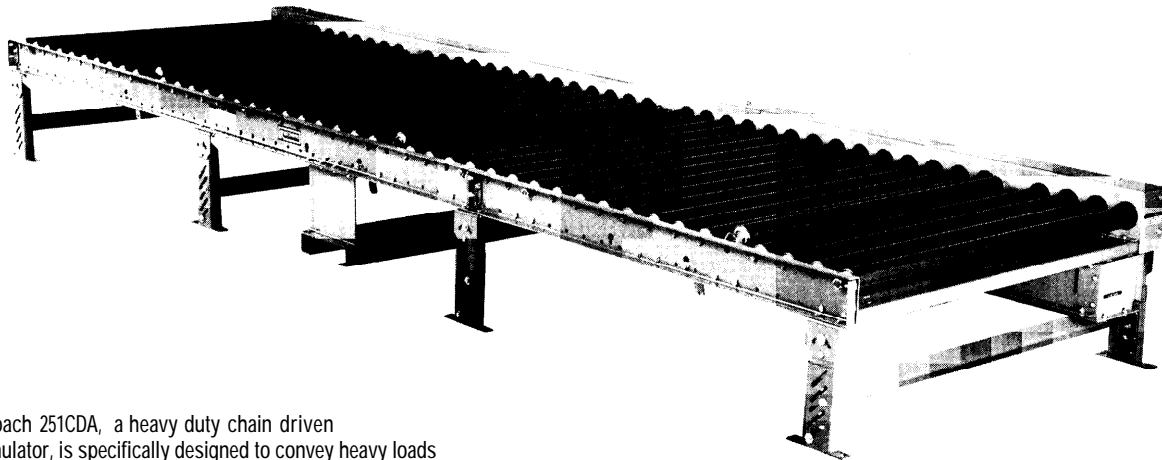


MODEL 251CDA HEAVY DUTY CHAIN DRIVEN ZERO PRESSURE ACCUMULATOR



The Roach 251CDA, a heavy duty chain driven accumulator, is specifically designed to convey heavy loads such as tote pans, castings, drums, and pallet loads with zero back pressure.



SPECIFICATIONS

TREAD ROLLERS: 2-1/2" dia. x 11 ga.

CHAIN DRIVE: Roller-to-roller No. 40 roller chain. Zone-to-zone No. 60 roller chain.

CENTER DRIVE: Drive either side mounted or underside mounted (specify). Drive shafts are supported by precision, heavy duty, lubricated, ball bearing units.

ZONE LENGTH: 60 inches.

BED: 7" x 1-1/2" x 7 ga. and 5" x 1-1/2" x 7 ga. formed steel channel frame. Bed sections are bolted together with butt couplings and floor supports.

SPEED: 35 FPM, constant.

BEARINGS: Removable type, heavy duty ball bearings, zinc-plated, grease packed, labyrinth seal.

CHAIN GUARD: All chains are completely enclosed along the entire length of the conveyor.

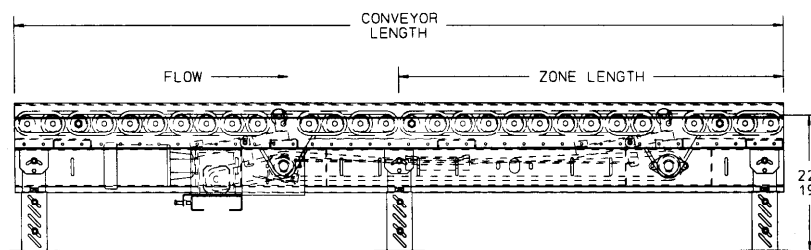
FLOOR SUPPORTS: For underside drive SH-4 supports adjust from 19"-22" TOR; For side mounted drive SH-2 supports adjust from 13"-16" TOR. Supports provided on 5' centers.

MOTOR DRIVE: 3/4 HP, 230/460/3, 60 cycle, ODP right angle gear motor.

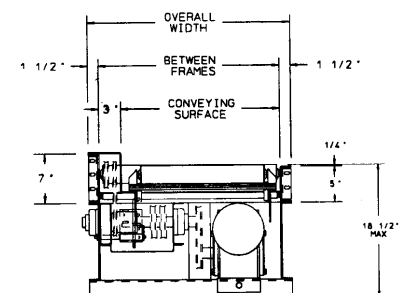
CAPACITY: 1000 lbs./ft. up to a maximum of 4000 lb. pallet.

ELECTRICAL CONTROLS: Available as an option.

Indoff Distributor 860-632-2026



HP @35 FPM	REDUCER
3/4	RDW 13340-02
1	RDW13150-01
1-1/2	RDW13150-02
2	RDW 13200-02



☐ 6 week shipment

SPECIFICATION TABLE

CONVEYOR LENGTH		5'	10'	15'	20'	25'	30'	35'	40'	50'	60'	70'	80'	90'	100'
BF	CONV. SURFACE	Unit Weights (lbs.) with 4" roller center (For other centers, deduct weights below)													
15"	12"	525	869	1213	1557	1902	2246	2590	2934	3623	4311	5000	5688	6377	7066
21"	18"	574	958	1343	1728	2112	2497	2882	3266	4036	4805	5574	6344	7113	7882
27"	24"	631	1063	1495	1926	2358	2789	3221	3653	4516	5379	6242	7105	7975	8845
33"	30"	685	1151	1634	2108	2582	3057	3531	4005	4954	5903	6851	7806	8756	9706
39"	36"	733	1246	1758	2271	2784	3297	3809	4322	5348	6373	7399	8424	9454	10484
45"	42"	786	1342	1897	2453	3009	3565	4120	4676	5787	6899	8011	9122	10242	11362
51"	48"	833	1427	2021	2615	3209	3802	4396	4990	6178	7365	8553	9741	10941	12141
57"	54"	886	1523	2160	2707	3434	4070	4707	5344	6618	7891	9165	10439	11689	12939
63"	60"	940	1620	2300	2980	3659	4339	5019	5699	7059	8418	9778	11138	12508	13878

Deduct the following weights (lbs.) for other than 4" centers

ROLLER CENTERS	15" BF		21" BF		27" BF		33" BF		39" BF		45" BF		51" BF		57" BF		63" BF	
	Per 5'	Per 10'	Per 5'	Per 10'	Per 5'	Per 10'	Per 5'	Per 10'	Per 5'	Per 10'	Per 5'	Per 10'	Per 5'	Per 10'	Per 5'	Per 10'	Per 5'	Per 10'
6"	-30	-60	-40	-80	-50	-100	-60	-120	-65	-130	-75	-150	-80	-160	-90	-180	-100	-200

OPTIONAL EQUIPMENT

ZONE LENGTHS: 3' through 10' in 4" or 6" increments as per roller centers. Frame lengths will vary with zone lengths.

BED: 7" x 9.8 lbs./ft. and 5" x 6.7 lbs.& ft. structural frames. Rollers on 4" centers.

TREAD ROLLERS: 2-9/16" x 7 ga. steel.

FLOOR SUPPORTS: Other height supports available, adjustable or fixed. Minimum elevation 13-5/8" TOR using side mounted drive.

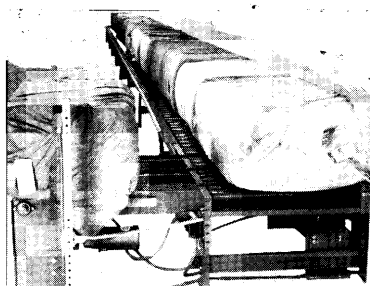
SPEED: Constant speed; 25-60 FPM (specify). Other constant or variable speeds available. NOTE: CAPACITY CHANGES WITH SPEED.

MOTORS: Available through 2 HP with characteristics such as totally enclosed, etc.

ELECTRICAL CONTROLS: Manual start/stop push button switch; magnetic starter (one direction); limit switch; electric solenoid; hydraulic dash pot.

LOAD CAPACITY @ 35 FPM, 6" RC

HP	MOVING		ACCUMULATED	
	UP TO 50'	51' - 100'	UP TO 50'	51' - 100'
3/4	6000	5000	12000	10000
1	9000	7500	18000	15000
	14000	12500	28000	25000
2	20000	18000	40000	36000



Bales of cotton, weighing over 500 lbs. each, are accumulated in 5' long zones on this chain driven accumulator. 3.5" x 9 ga. heavy duty rollers easily handle the uneven load distribution of cotton bales or any other banded or baled material.

SIDE MOUNTED DRIVE

