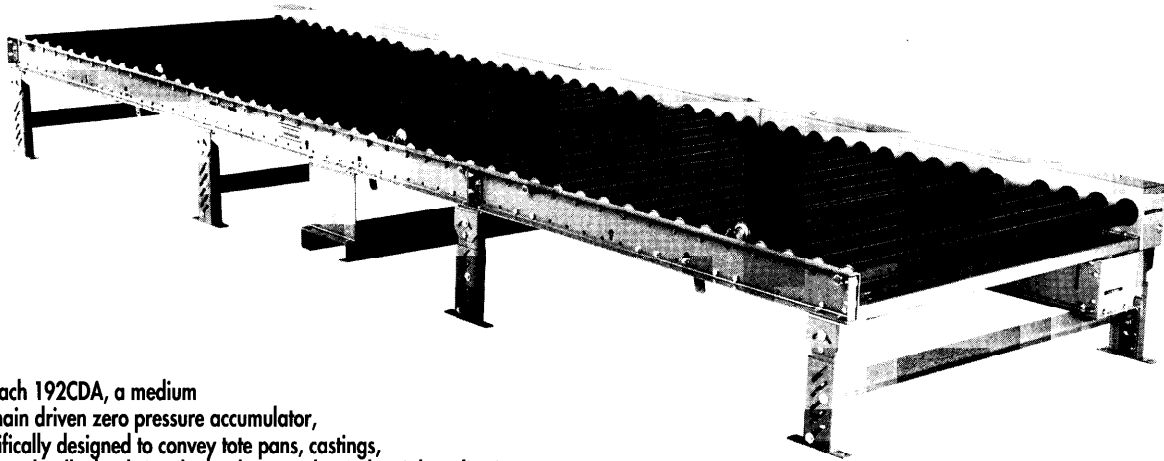


MODEL 192CDA

MEDIUM DUTY CHAIN DRIVEN ZERO PRESSURE ACCUMULATOR

Roach sold by
Indoff 860-632-2026



The Roach 192CDA, a medium duty chain driven zero pressure accumulator, is specifically designed to convey tote pans, castings, drums, and pallet loads in oily, bottling or other industrial applications.



SPECIFICATIONS

TREAD ROLLERS: 1.9" dia. x 12 ga.

CHAIN DRIVE: Roller-to-roller No. 40 roller chain. Zone-to-zone No. 60 roller chain.

CHAIN GUARD: All chains are completely enclosed along the entire length of the conveyor.

CENTER DRIVE: Drive either side mounted or underside mounted (specify). Drive shafts are supported by precision, heavy duty, lubricated, ball bearing units.

ROLLER CENTERS: 4" or 6" available.

ZONE LENGTH: 60 inches.

SPEED: 35 FPM, constant.

BEARINGS: Removable type, heavy duty ball bearings, zinc-plated, grease packed, labyrinth seal.

BED: 6-1/2" x 1-1/2" x 10 ga. and 4-1/2" x 1-1/2" x 10 ga. formed steel channel frame. Bed sections are bolted together with butt couplings and floor supports.

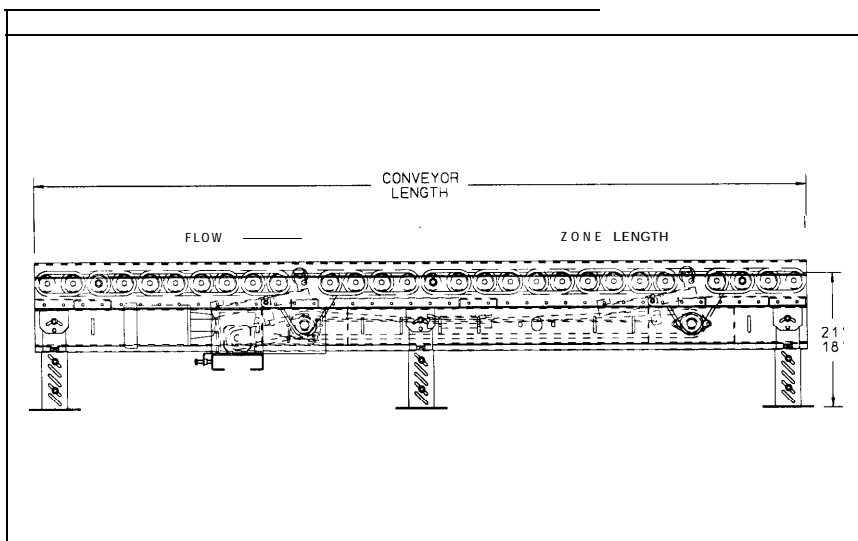
FLOOR SUPPORTS: For underside drive, SM-3 supports adjust from 18"-21" TOR; For side mounted drive SM-1 supports adjust from 12"-15" TOR. Supports provided on 5' centers.

MOTOR DRIVE: 1/3 HP, 230/460/3, 60 cycle, ODP right angle gear motor.

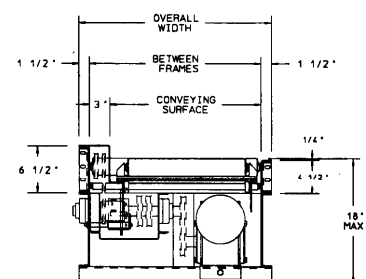
CAPACITY: 300 lbs./ft. up to a maximum of 1200 lb. pallet/load.

ELECTRICAL CONTROLS: Available as an option.

Indoff Distributor 860-632-2026



HP @ 35 FPM	REDUCER
3/4	RDW13340-02
1	RDW13150-01
	RDW 13 150-02
2	RDW 13200-02



Indoff Nationwide Distributors for Roach

www.ahutton.com 860-632-2026 fax at 2028 web site at ahutton@ahutton.com

6 week shipment

SPECIFICATION TABLE

CONVEYOR LENGTH		5'	10'	15'	20'	25'	30'	35'	40'	50'	60'	70'	80'	90'	100'
BF	CONV. SURFACE	Unit weights (lbs.) with 4" roller centers (For other centers, deduct weights below)													
15"	12"	471	761	1051	1341	1632	1922	2212	2502	3083	3663	4244	4824	5405	5986
21"	18"	511	832	1154	1476	1797	2119	2441	2762	3406	4049	4692	5336	5979	6622
27"	24"	561	922	1284	1646	2006	2369	2728	3093	3816	4539	5262	5977	6706	7435
33"	30"	609	998	1405	1802	2200	2598	2996	3393	4189	4985	5780	6582	7379	8176
39"	36"	648	1075	1502	1929	2357	2784	3211	3638	4493	5347	6202	7056	7915	8774
45"	42"	693	1156	1618	2081	2544	3007	3469	3932	4857	5783	6709	7634	8568	9502
51"	48"	733	1226	1720	2213	2707	3199	3693	4186	5173	6159	7146	8133	9132	10131

Deduct the following weights (lbs.) for other than 4" centers

ROLLER CENTERS	15" BF		21" BF		27" BF		33" BF		39" BF		45" BF		51" BF	
	Per 5'	Per 10'	Per 5'	Per 10'	Per 5'	Per 10'	Per 5'	Per 10'	Per 5'	Per 10'	Per 5'	Per 10'	Per 5'	Per 10'
6"	-25	-50	-30	-60	-40	-80	-50	-100	-55	-110	-65	-130	-70	-140

OPTIONAL EQUIPMENT

ZONE LENGTHS: 3' through 10' in 4" or 6" increments as per roller centers. Frame lengths will vary with zone lengths.

BED: 6-1/2"x 1-1/2"x7ga. and 4-1/2"x 1-1/2"x7ga. formed steel channel frame.

TREAD ROLLERS: 1.9" dia. x 9 ga. steel.

FLOOR SUPPORTS: Other height supports available, adjustable or fixed. Minimum elevation 13-1/8" TOR using side-mounted drive.

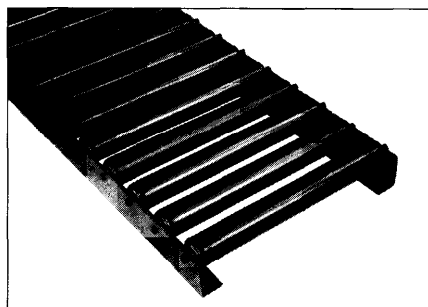
SPEED: Constant speed; 25-60 FPM (specify). Other constant or variable speeds available. NOTE: CAPACITY CHANGES WITH SPEED.

MOTORS: Available through 2 HP with characteristics such as totally enclosed, etc.

ELECTRICAL CONTROLS: Manual start/stop push button switch; magnetic starter (one direction); limit switch; electric solenoid; hydraulic dash pot.

LOAD CAPACITY @ 35 FPM 4" RC*		
HP	UP TO 50' L-10	
	750	---
1/2	2000	---
3/4	4500	2250
	7500	4500
	12,000	10,000
2	15,000	15,000

*Capacity listed in chart must not exceed



Roach gravity conveyors are frequently designed for low-profile applications. 2-1/2"x 1-1/2"x3/16" structural angle frames, shown at left, transform a 192S gravity conveyor into a new low-profile unit.

SIDE MOUNTED DRIVE

