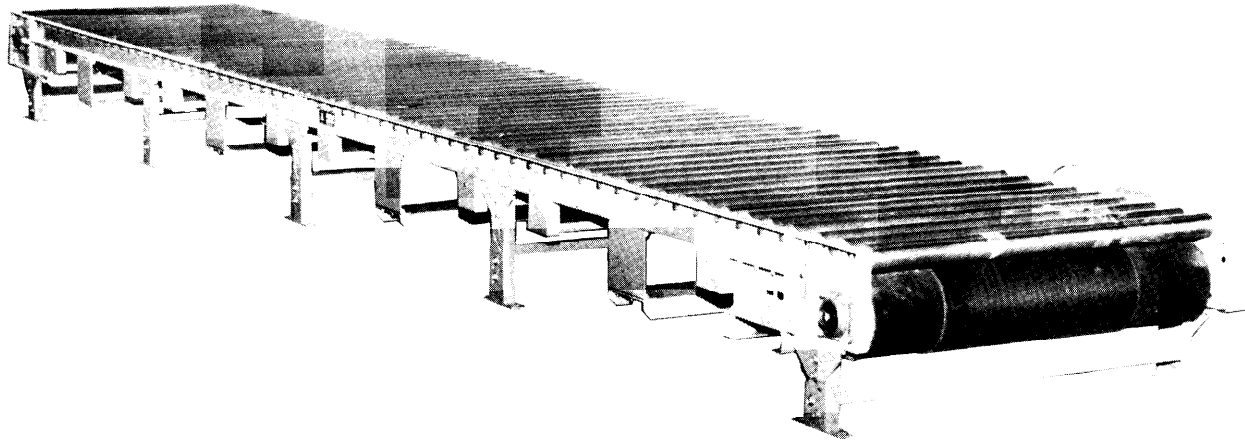


# MODEL 251ZPA HEAVY DUN ZERO PRESSURE ACCUMULATOR



The Roach 251ZPA is a heavy duty zone pallet accumulator. It is designed for accumulating in 5'-0" intervals to eliminate products touching at any time.

## SPECIFICATIONS

TREAD ROLLERS: 2-1/2" dia. x **11** ga.

PRESSURE ROLLERS: **1.9**" dia. x 16 ga.

BELTING: **PVC- 120**, friction surface, **24"** wide.

SIDE MOUNT END DRIVE: **Allows** one direction unit operation.

DRIVE PULLEY: 12" dia., with 1-1/2" x 6" dia. shaft, crowned and fully lagged.

TAIL PULLEY: 8" dia., crowned, with 1-3/4" x 6" dia. shaft.

TAKE-UP: Screw type unit at tail pulley provides **12"** belt take-up.

RETURN ROLLERS: 1-9" dia. x **16** ga., adjustable.

BELT SPEED: 35 FPM, constant.

BEARINGS: All pulley bearings are precision, heavy duty, lubricated, ball bearing units with cast iron housings.

BED: 5" x 1-1/2" x 3/16" formed steel channel frame slotted for tread rollers to pop-out. When unit is installed at 7'-0" elevation or higher, rollers must be retained in conveyor. Specify desired elevation. Bed sections are bolted together with butt couplings and floor supports.

ACCUMULATION CONTROLS: Roller limit switch every 5'. (If pallet structure will not accept roller limit switch, see options for photo-electric sensors).

FLOOR SUPPORTS: Elevation for **18"** top of roller.

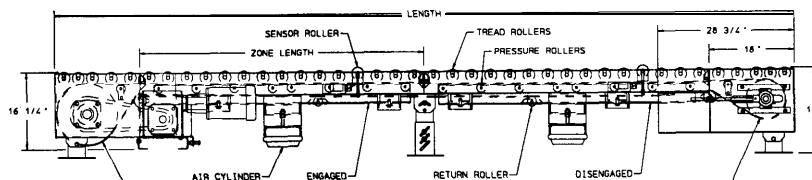
MOTOR DRIVE: **1 HP**, 230/460/3, 60 cycle, ODP right angle gear motor.

ROLLER CHAIN: No. 60 chain provided at drive pulley. Chain take-up provided on motor base.

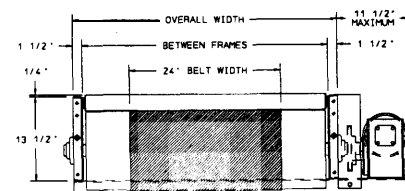
ELECTRICAL CONTROLS: Available as an option.

CAUTION: Pop-out rollers should be retained in frame if unit is elevated to 7'-0" and above.

## Indoff Distributor 860-632-2026



HP @ 35 FPM	REDUCER
1	RDW16150-03
1-1/2	RDW16150-03
2	RDW 16300-03
3	RDW16300-03



**SPECIFICATION TABLE**

CONVEYOR LENGTH		18'	23'	28'	33'	38'	43'	48'	53'	58'	63'	68'	73'	78'	83'
BF	OAW	Unit weights (lbs.) with 4" roller centers (For other centers, deduct weights below)													
39"	42"	1974	2459	2944	3429	3914	4399	4884	5369	5854	6339	6824	7309	7794	8279
43"	46"	2105	2623	3141	3658	4176	4694	5211	5729	6247	6765	7282	7800	8318	8836
51"	54"	2308	2875	3443	4010	4577	5145	5712	6279	6846	7414	7981	8548	9116	9683
57"	60"	2476	3084	3692	4301	4901	5518	6126	6734	7343	7951	8560	9168	9776	10385

Deduct the following weights (lbs.) for other than 4" centers

BF	RC	18'	23'	28'	33'	38'	43'	48'	53'	58'	63'	68'	73'	78'	83'
39"	6"	-288	-368	-448	-528	-608	-688	-768	-848	-928	-1008	-1088	-1168	-1248	-1328
43"	6"	-306	-391	-476	-561	-646	-731	-816	-901	-986	-1071	-1156	-1241	-1326	-1411
51"	6"	-360	-460	-560	-660	-760	-860	-960	-1060	-1160	-1260	-1360	-1460	-1560	-1660
57"	6"	-396	-506	-616	-726	-836	-946	-1056	-1166	-1276	-1386	-1496	-1606	-1716	-1826

**OPTIONAL EQUIPMENT**

**BELTING:** 12" wide PVC-1 20.

**DRIVE PULLEY:** 8" dia. with 1-7/16" dia. shaft, crowned and fully lagged.

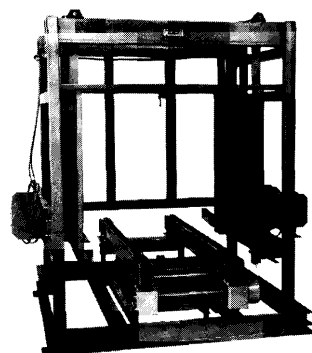
**FLOOR SUPPORTS:** Other height supports available, adjustable or fixed.

**BELT SPEED:** Constant speed; 25-60 FPM (specify). Other constant or variable speeds available. **NOTE: CAPACITY CHANGES WITH SPEED.**

**MOTORS:** Available through 3 HP with characteristics such as totally enclosed, single phase, etc.

**ELECTRICAL CONTROLS:** Manual start/stop push button switch; magnetic starter (one direction); limit switch; photo relay; others available.

HP	LOAD CAPACITY @ 35 FPM			
	39" BF - 43" BF		51" BF - 57" BF	
	UP TO 40'	41' - 80'	UP TO 40'	41' - 80'
1	5200	2150	4800	--
1-1/2	8950	5900	7850	4600
2	12700	9700	11600	8300
3	19800	17200	19000	15800



A plywood stacker, recently designed and manufactured by Roach Conveyors, incorporates pneumatics and a chain drag conveyor to stack single sheets of plywood into taller stacks. This unit can also transform single pallets into stacks for storage or accumulation.

**HEAW DUTY AIR CYLINDER**

