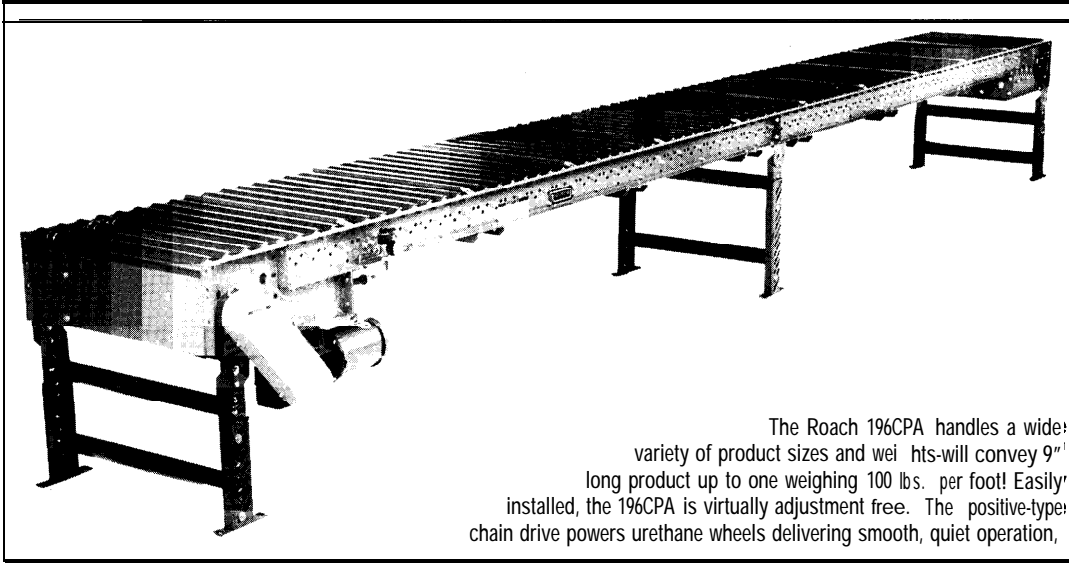


# MODEL 196CPA CHAIN POWERED ZERO PRESSURE ACCUMULATOR



The Roach 196CPA handles a wide variety of product sizes and weights-will convey 9" long product up to one weighing 100 lbs. per foot! Easily installed, the 196CPA is virtually adjustment free. The positive-type chain drive powers urethane wheels delivering smooth, quiet operation,



## SPECIFICATIONS

TREAD ROLLERS: 1.9" dia. x 16 ga.

SENSOR ROLLERS: 1" dia. x 18 ga.

DRIVE WHEEL CLUTCH: Drive chain powers drive wheel assembly which in turn, provides drive pressure to upper tread rollers.

DRIVE CHAIN: #40 roller chain. UHMW chain guides support the drive and return chain strands.

CHAIN GUARD: Completely enclosed along the entire length of the conveyor.

DRIVE SHAFT: 1-7/16" dia. located at discharge end of unit.

SPEED: 60 FPM, constant.

BEARINGS: All bearings are precision heavy duty, lubricated ball bearing units with cast iron housings.

END TAKE-UP: Manual screw type adjustment is located at infeed end.

END DRIVE: Allows one-direction unit operation.

BED: 5" x 1-1/2" x 10 ga. formed channel frame.

MOTOR DRIVE: 1/3 HP, 230/460/3, 60 cycle, ODP right angle gear motor.

ACCUMULATION ZONES: 2'-6" long (there will be 1' of live roller at each end of the unit over the end plates).

ROLLER CHAIN: Drive shaft is driven by No. 50 roller chain for 1-1 HP or less and No. 60 chain on larger drives.

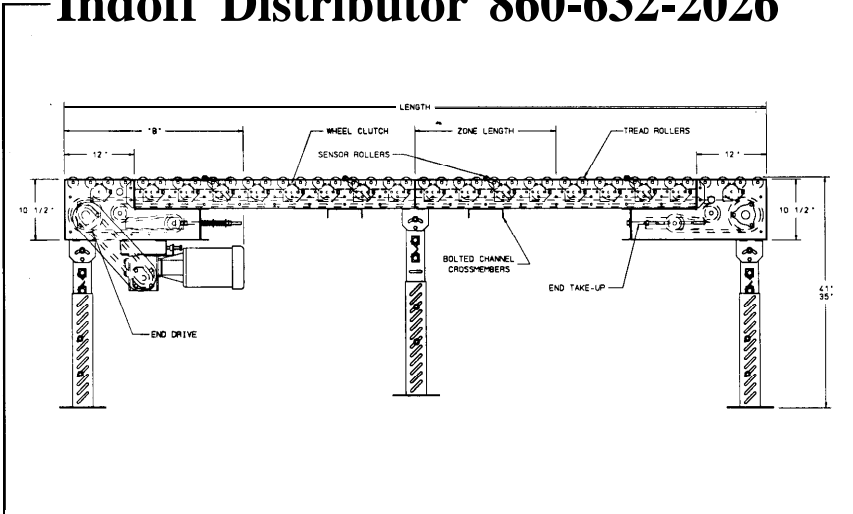
Chain take-up provided on motor base.

FLOOR SUPPORTS: Adjustable 31"-37" TOR with SM-5 at end plates and SM-6 at intermediate bed sections; 35"-41" TOR with all SM-6. Supports can be lagged to floor.

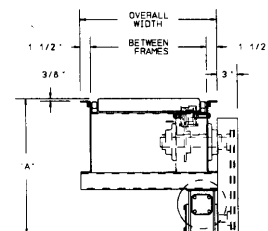
CAPACITY: 100 lbs. per foot distributed live load. 500 lbs. effective chain pull with spring loaded chain tensioner. See load capacity chart opposite page.

ELECTRICAL CONTROLS: Optional.

## Indoff Distributor 860-632-2026



HP @ 60 FPM	REDUCER	"A"	"B"
1/3	RDW13120-02,03	19 - 1/2"	33-7/32"
1/2	RDW13120-02,03	19 - 1/2"	33-7/32"
3/4	RDW13340-02,03	20 "	34-5/16"
1	RDW13150-01,04	20-1/2"	34-5/8"
1 - 1/2	RDW13150-02,03	21 - 1/2"	34-5/8"
2		23 "	36-5/16"



■ 4 week shipment

**SPECIFICATION TABLE**

CONVEYOR LENGTH		5'	10'	15'	20'	25'	30'	40'	50'	60'	70'	80'	90'	100'
BF	OAW	Unit weights (lbs.) with 2'.6" long zones, 3" RC, (2) rollers non-powered												
15"	18"	256	365	475	585	695	805	1025	1245	1465	1685	1905	2125	2345
19"	22"	268	387	507	626	746	866	1105	1345	1584	1824	2063	2308	2542
21"	24"	279	408	538	667	797	926	1185	1444	1703	1962	2221	2480	2739
25"	28"	291	430	570	708	848	988	1265	1544	1822	2101	2379	2658	2936
27"	30"	302	451	601	749	899	1047	1345	1643	1941	2239	2537	2835	3133
33"	36"	326	494	663	831	1000	1168	1505	1842	2179	2516	2853	3190	3527
39"	42"	348	537	727	913	1103	1284	1665	2041	2417	2793	3169	3545	3921

Add the following weights (lbs.) for 2' long zone, 3" RC, with all clutch driven rollers and 1" dia. sensor roller.

TREAD ROLLER CENTERS	15" BF		19" BF		21" BF		25" BF		27" BF		33" BF		39" BF	
	Per 5'	Per 10'	Per 5'	Per 10'	Per 5'	Per 10'	Per 5'	Per 10'	Per 5'	Per 10'	Per 5'	Per 10'	Per 5'	Per 10'
3"	+7	+12	+8	+14	+8	+15	+9	+16	+9	+17	+10	+19	+11	+21

Deduct the following weights (lbs.) for 3' long zone, 4-1/2" RC (max.), with (6) clutch driven rollers per 3' zone.

TREAD ROLLER CENTERS	15" BF		19" BF		21" BF		25" BF		27" BF		33" BF		39" BF	
	Per 5'	Per 10'	Per 5'	Per 10'	Per 5'	Per 10'	Per 5'	Per 10'	Per 5'	Per 10'	Per 5'	Per 10'	Per 5'	Per 10'
4-1/2"	-18	-36	-21	-42	-23	-45	-25	-50	-27	-53	-31	-61	-35	-70

**OPTIONAL EQUIPMENT**

**ACCUMULATION ZONES:** 2'-0" and 3'-0" available as standard option. All rollers powered via clutch assembly on 2'-0" long zones; 3'-0" long zones available with rollers on 3" or 4-1/2" centers.

**UNDERTRUSSED BED:** Available to provide clearance underneath unit at bed joint locations. Specify location of undertrussing and desired clearance underneath unit.

**FLOOR SUPPORTS:** Other height supports (adjustable or fixed); also casters supports.

**MOTORS:** Available through 2 HP with characteristics such as totally enclosed, single phase, etc.

**SPEED:** 35-250 FPM, constant speed (specify). Other constant or variable speeds available. **NOTE: CAPACITY CHANGES WITH SPEED.**

**CEILING HANGERS:** 5/8" dia. threaded rod with hardware to attach rods to conveyor. Provides 6' clearance between ceiling and TOR (furnished in place of floor supports).

**GUARD RAILS:** 1-3/4" x 1" formed channel, adjusts horizontally to 6" wider than BF and vertically to 6" above top of roller.

**ELECTRICAL CONTROLS:** Manual start/stop push button switch; limit switch; one-direction magnetic starter; photo relay; others available.

LOAD CAPACITY @ 60 FPM					
UP TO 50'			51' TO 100'		
HP	MAX. LOAD/FT.	MAX. LOAD*	HP	MAX. LOAD/FT.	MAX. LOAD*
1/3	20	1000	3/4	30	3000
1/2	50	2500	1	50	5000
3/4	100	5000	1-1/2	80	8000

\*Product weights must not exceed 100 lbs./ft. or a total distributed weight as listed in chart.

**DRIVE WHEEL CLUTCH (rollers/guard removed for clarity)**

