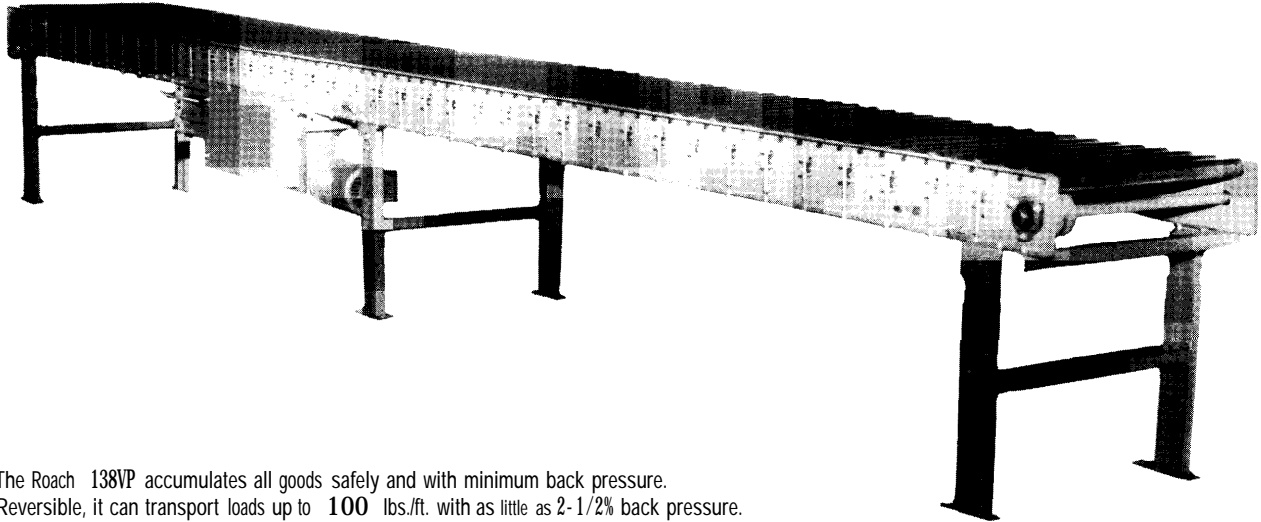


# MODEL 138VP

## LIGHT DUTY VARIABLE PRESSURE LIVE ROLLER ACCUMULATOR



The Roach 138VP accumulates all goods safely and with minimum back pressure. Reversible, it can transport loads up to 100 lbs./ft. with as little as 2-1/2% back pressure.



### SPECIFICATIONS

TREAD ROLLERS: 1-3/8" dia. x 18 ga.

PRESSURE ROLLERS: 1-3/8" dia. x 18 ga.

BELTING: 2-1/4" wide "high strength" PVC-150 belt.

CENTER DRIVE: Reversible drive with 24" integral belt take-up.

DRIVE PULLEY: 4" dia. with 1-3/16" shaft or 8" dia. with 1-7/16" shaft, both crowned and fully lagged.

END PULLEY: 4" dia., crowned, with 1-3/16" shaft.

RETURN ROLLERS: 1-3/8" dia., adjustable.

BELT SPEED: 60 FPM, constant.

BEARINGS: All pulley bearings are precision, heavy duty, lubricated, ball bearing units with cast iron housings.

BED: 6" x 1-1/2" x 12 ga. channel frame slotted for tread rollers to pop-out. When unit is installed at 7'-0" elevation or higher, rollers must be retained in conveyor frame. Specify desired elevation. Bed sections attached with couplings and floor supports.

SQUARING RODS: Adjustable rods on underside of bed allow frame to be squared for improved belt tracking and are standard on all units over 30'.

FLOOR SUPPORTS: Adjustable 30"-42" TOR. Supports can be lagged to floor.

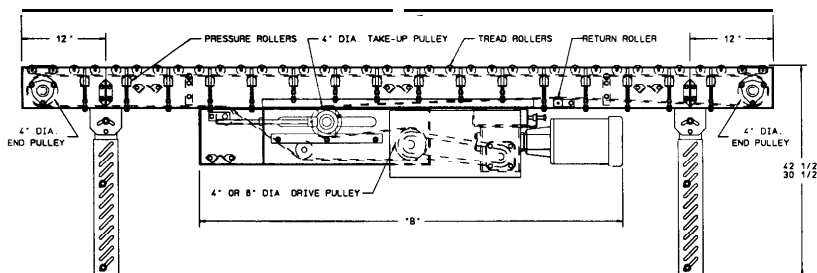
MOTOR DRIVE: 1/3 HP, 230/460/3, 60 cycle, ODP right angle gear motor.

ROLLER CHAIN: Drive pulley is driven by No. 50 roller chain for 1-1/2 HP or less and No. 60 chain on larger drives. Chain take-up provided on motor base.

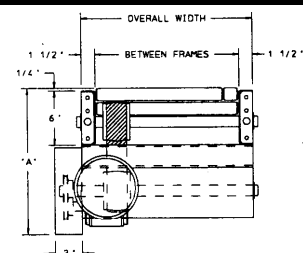
ELECTRICAL CONTROLS: Available as an option.

CAUTION: Pop-out rollers should be retained in frame if unit is elevated to 7'-0" and above.

## Indoff Distributor 860-632-2026



HP @ 60 FPM	REDUCER	"A"	"B"
1/3	RDW 13120-02	16-1/16"	54-7/32"
1/2	RDW 13120-02	16-1/16"	54-7/32"
3/4	RDW13340-02	16-15/32"	55-1/16"
	RDW13150-01	18-3/16"	55-1/8"
1-1/2	RDW13150-02	18-3/16"	55-1/8"
2,3	RDW 13200-02	19"	16"



**SPECIFICATION TABLE**

Up to 20'-0" will have a 4" dia. drive pulley, 21'-0" and over will have an 8" dia. drive pulley

CONVEYOR LENGTH			5'	10'	15'	20'	25'	30'	40'	50'	60'	70'	80'	90'	100'
BF	OAW	BELT	Unit weights (lbs.) with 1 1/2" roller centers (For other centers, deduct weights below)												
10"	13"	2 1/4"	360	484	609	739	864	990	1250	1504	1752	2022	2281	2541	2794
16"	19"	2 1/4"	415	575	735	886	1046	1202	1517	1832	2150	2463	2778	3093	3409
22"	25"	2 1/4"	466	656	846	1035	1225	1410	1790	2161	2537	2913	3290	3665	4047

Deduct the following weights (lbs.) for other than 1 1/2" centers

BF ROLLER CENTERS		5'	10'	15'	20'	25'	30'	40'	50'	60'	70'	80'	90'	100'
10"	3"	-30	-60	-90	-120	-150	-180	-240	-300	-360	-420	-480	-540	-600
16"	3"	-45	-90	-135	-180	-225	-270	-360	-450	-540	-630	-720	-810	-900
22"	3"	-60	-120	-180	-240	-300	-360	-480	-600	-720	-840	-960	-1080	-1200
10"	4 1/2"	-40	-80	-120	-160	-200	-240	-320	-400	-480	-560	-640	-720	-800
16"	4 1/2"	-60	-120	-180	-240	-300	-360	-480	-600	-720	-840	-960	-1080	-1200
22"	4 1/2"	-80	-160	-240	-320	-400	-480	-640	-800	-960	-1120	-1280	-1440	-1600

**OPTIONAL EQUIPMENT**

**BELTING:** 6" wide PVC-I 20; 6" wide PVC-I 50; 3 ply friction surface; 3 ply black neoprene friction surface.

**END DRIVE:** May be located underneath or on side of conveyor. Minimum possible height is 20" TOR for drive mounted underneath and 10" TOR for side mounted end drive. Side mounted drive may be located on either side of conveyor (specify). Belt take-up required for either drive.

**AUXILIARY TAKE-UP:** Provides 24" of belt take-up. Specify location.

**CEILING HANGERS:** 5/8" dia. threaded rod with hardware to attach rods to conveyor. Provides 6' clearance between ceiling and TOR (furnished in place of floor supports).

**FLOOR SUPPORTS:** Other height supports (adjustable or fixed); also casted supports.

**BELT SPEED:** 35-I 20 FPM, constant speed (specify). Other constant or variable speeds available. **NOTE: CAPACITY CHANGES WITH SPEED.**

**MOTORS:** Available through 2 HP with characteristics such as totally enclosed, single phase, etc.

**ELECTRICAL CONTROLS:** Manual start/stop push button switch; reversing drum switch; magnetic starter (one direction or reversible); limit switch; photo relay; others available.

LOAD CAPACITY @ 60 FPM			
HP	UP TO 50'	51' - 100'	BELT
1/3	300	---	---
1/2	900	400	2-1/4#150
3/4	1750	1250	2-1/4#150
1	2300	2000	6" #120
1-1/2	3500	3000	6" #120
2	4800	3900	6" #120

**VARIABLE PRESSURE ADJUSTMENT**

