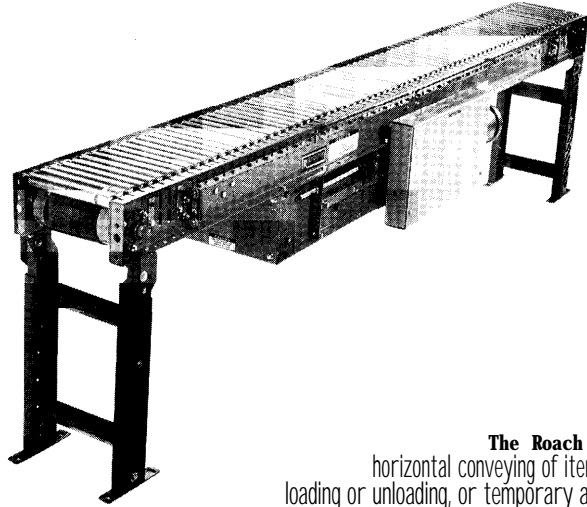


MODEL 138LR

LIGHT DUTY BELT DRIVEN LIVE ROLLER



The Roach 138LR is ideally suited for horizontal conveying of items where transfers, side loading or unloading, or temporary accumulation is required.

SPECIFICATIONS

TREAD ROLLERS: 1-3/8" dia. x 18 ga.

PRESSURE ROLLERS: 1-3/8" dia. x 18 ga.

BELTING: 6" wide black PVC-1 20.

CENTER DRIVE: Reversible drive with 24" integral belt take-up. Specify location.

DRIVE PULLEY: 4" dia., with 1-3/1 6" dia. shaft or 8" dia., with 1-7/1 6" dia. shaft, both crowned and fully lagged.

END PULLEY: 4" dia., crowned, with 1-3/1 6" dia. shaft.

BELT SPEED: 60 FPM, constant.

RETURN ROLLERS: 1-3/8" dia. x 18 ga., adjustable.

BEARINGS: All pulley bearings are precision, heavy duty, lubricated, ball bearing units with cast iron housings.

BED: 6" x 1-1/2" x 12 ga. channel frame slotted for tread rollers to pop-out. When unit is installed at 7'-0" elevation or higher, rollers must be retained in conveyor frame. Specify desired elevation. Bed sections attached with couplings and floor supports.

SQUARING RODS: Adjustable rods on underside of bed allow frame to be squared for improved belt tracking and are standard on all units over 30'.

FLOOR SUPPORTS: Adjustable 30"-42" TOR. Supports can be lagged to floor.

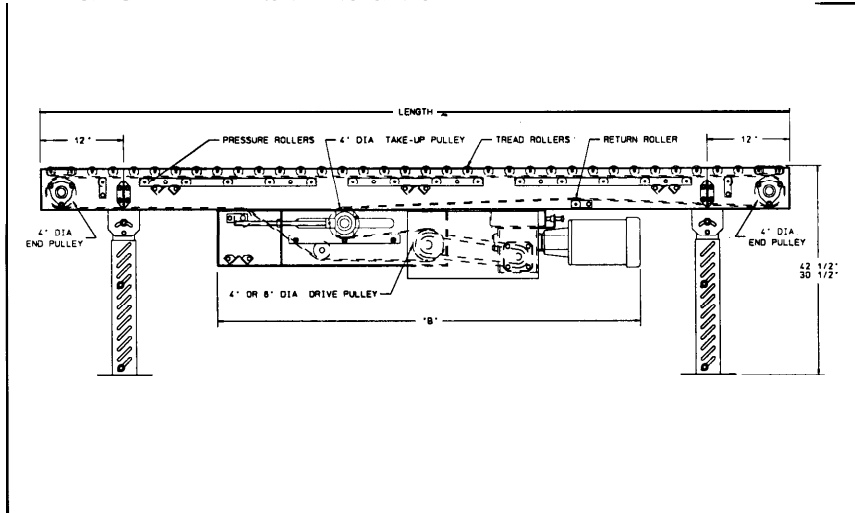
MOTOR DRIVE: 1/3 HP, 230/460/3, 60 cycle, ODP right angle gear motor.

ROLLER CHAIN: Drive pulley is driven by No. 50 chain for 1-1/2 HP or less and No. 60 chain on larger drives. Chain take-up provided on motor base.

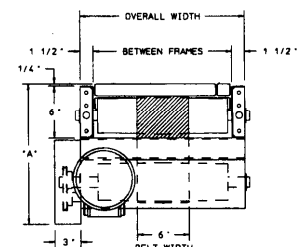
ELECTRICAL CONTROLS: Available as an option.

CAUTION: **Pop-out** rollers should be retained in frame if unit is elevated to **7'-0" and above**.

Indoff Distributor 860-632-6026



| HP @ 60 FPM | REDUCER | "A" | "B" |
|-------------|--------------|-----------|----------|
| 1/3 | RDW13 120-02 | 16-1/16" | 54-7/32" |
| 1/2 | RDW13120-02 | 16-1/16" | 54-7/32" |
| 3/4 | RDW13340-02 | 16-15/32" | 55-1/16" |
| 1 | RDW13150-01 | 18-3/16" | 55-1/8" |
| 1-1/2 | RDW13150-02 | 18-3/16" | 55-1/8" |
| 2,3 | RDW13200-02 | 19" | 6" |



Indoff Nationwide Distributors for Roach

www.ahutton.com 860-632-2026 fax at 2028 web site at ahutton@ahutton.com

3 week shipment

23

SPECIFICATION TABLE

Up to 50'-0" will have a 4" dia. drive pulley, 5' 1" - 0" and over will have an 8" dia. drive pulley

| CONVEYOR LENGTH | | | 5' | 10' | 15' | 20' | 25' | 30' | 40' | 50' | 60' | 70' | 80' | 90' | 100' |
|-----------------|-----|--------|--|-----|-----|------|------|------|------|------|------|------|------|------|------|
| BF | OAW | BELT | Unit weights (lbs.) with 1 1/2" roller centers (For other centers, deduct weights below) | | | | | | | | | | | | |
| 10" | 13" | 21/4" | 360 | 484 | 609 | 739 | 864 | 990 | 1250 | 1504 | 1752 | 2022 | 2281 | 2541 | 2794 |
| 16" | 19" | 2 1/4" | 415 | 575 | 735 | 886 | 1046 | 1202 | 1517 | 1a32 | 2150 | 2463 | 2778 | 3093 | 3409 |
| 22" | 25" | | 466 | 656 | 846 | 1035 | 1225 | 1410 | 1790 | 2161 | 2537 | 2913 | 3290 | 3665 | 4047 |

Deduct the following weights (lbs.) for other than 1 1/2" centers

| BF | ROLLER CENT | 5' | 10' | 15' | 20' | 25' | 30' | 35' | 40' | 50' | 60' | 70' | 80' | 90' | 100' |
|------|-------------|-----|------|------|------|------|------|------|------|------|-------|-------|-------|-------|-------|
| 1 | 3" | -30 | -60 | -90 | -120 | -150 | -180 | -240 | -300 | -360 | -420 | -480 | -540 | -600 | -600 |
| 1 6" | 3" | -45 | -90 | -135 | -180 | -225 | -270 | -360 | -450 | -540 | -630 | -720 | -810 | -900 | -900 |
| 22" | 3" | -60 | -120 | -180 | -240 | -300 | -360 | -480 | -600 | -720 | -840 | -960 | -1080 | -1200 | -1200 |
| 10" | 4 1/2" | -40 | -80 | -120 | -160 | -200 | -240 | -320 | -400 | -480 | -560 | -640 | -720 | -800 | -800 |
| 1 6" | 4 1/2" | -60 | -120 | -180 | -240 | -300 | -360 | -480 | -600 | -720 | -840 | -960 | -1080 | -1200 | -1200 |
| 22" | 4 1/2" | -80 | -160 | -240 | -320 | -400 | -480 | -640 | -800 | -960 | -1120 | -1280 | -1440 | -1600 | -1600 |

OPTIONAL EQUIPMENT

BELTING: 6" wide black PVC-I 50; 3-ply friction surface; 3-ply black neoprene friction surface.

END DRIVE: May be located underneath or on side of conveyor. Minimum possible height is 20" TOR for underneath mounted drive and 10" TOR for side mounted end drive. Side mounted drive may be located on either side of conveyor (specify). Belt take-up required for either drive.

AUXILIARY TAKE-UP: Provides 24" of belt take-up. Specify location.

BELT SPEED: Constant speed; 35-120 FPM (specify). Other constant or variable speeds available. **NOTE: CAPACITY CHANGES WITH SPEED.**

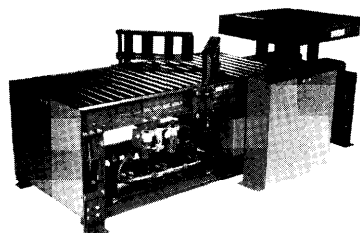
MOTORS: Available through 2 HP with characteristics such as totally enclosed, single phase, etc.

FLOOR SUPPORTS: Other height supports available, adjustable or fixed. Castered supports also available.

CEILING HANGERS: 5/8" dia. threaded rod with hardware to attach rods to conveyor. Provides 6' clearance between ceiling and TOR (furnished in place of floor supports).

ELECTRICAL CONTROLS: Manual start/stop push button switch; reversing drum switch; magnetic starter [one direction or reversible]; limit switch; photo relay; others available.

| LOADCAPACITY @ 60 FPM 3" RC | | | | |
|-----------------------------|----------------|---------------------|------------------|---------------------|
| HP | UP TO 50' LONG | MINIMUM PULLEY DIA. | 51' TO 100' LONG | MINIMUM PULLEY DIA. |
| 1/3 | 300 | 4 | ... | ... |
| 1/2 | 900 | 4 | ... | ... |
| 3/4 | 1750 | 4 | | a |
| | 2300 | 4 | 2000 | a |
| 1-1/2 | 3500 | a | 3000 | a |
| | 4800 | a | 3900 | a |



For many years Roach Conveyors has designed and built various units for the tire handling industry. This 196LR has been modified to center tires via a pneumatically actuated centering device. Tires are raised, again pneumatically, to facilitate another tire manufacturing process at discharge of conveyor.

POP-OUT ROLLERS (rollers removed for clarity)

