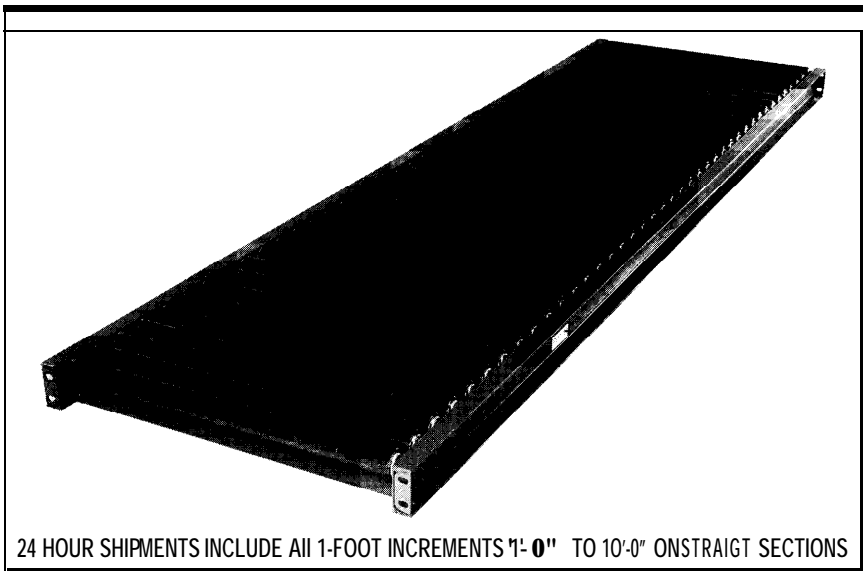
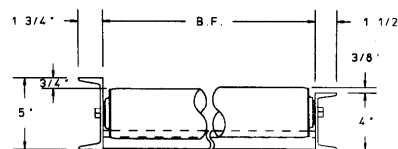


MODEL 3509S 860-632-2026 fax at 2028 'web site at ahutton@ahutton.com  
 3-1/2" DIA. X 9 GA. STEEL GRAVITY ROLLER CONVEYOR



MODEL NO. EXPLANATION

3509s -- 19 -- 4 ---H 9  
 roller no. RC length  
 BF high/low



24 HOUR SHIPMENTS INCLUDE ALL 1-FOOT INCREMENTS 1'-0" TO 10'-0" ON STRAIGHT SECTIONS

SPECIFICATIONS

**ROLLERS:** 3-1/2" x 9 ga. steel tubing with straight ends, reamed to provide smooth bearing seats.

**FRAMES:** 4" at 5.4 lbs. structural steel channel.

**BEARINGS:** Removable type, heavy duty ball bearings, zinc plated, grease packed.

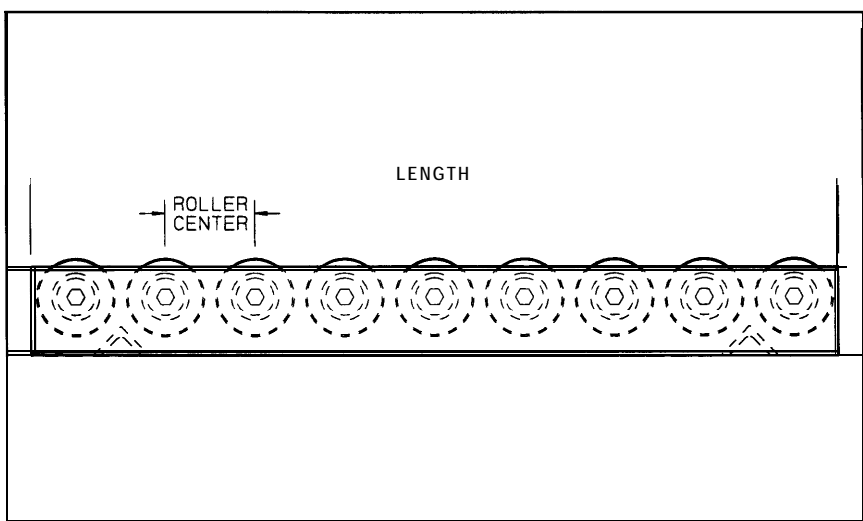
**COUPLINGS:** Butt type.

**AXLES:** 1 1/16" hex shaft, spring loaded; standard on 11" BF and above.

**CAPACITY:** 700 lbs. per roller, or 3750 lbs. maximum distributed live load per 10' section with supports at 10' centers; 8000 lbs. at 5' centers.

		UNIT WEIGHTS (lbs.)							
Nom. Rlr. Lnt BF		4" RC		6" RC		8" RC		12" RC	
		10'	5'	10'	5'	10'	5'	10'	5'
6"	7"	290	141	234	119	206	105	178	91
10"	11"	364	184	286	145	247	125	208	106
14"	15"	439	221	338	171	288	146	238	121
18"	19"	513	256	391	197	329	166	268	136
22"	23"	587	295	443	223	370	187	297	150
26"	27"	662	333	495	249	412	208	328	166
30"	31"	737	370	548	276	453	228	358	181
34"	35"	811	407	599	299	493	248	388	194
38"	39"	886	445	652	328	535	269	418	211
42"	43"	960	482	704	355	576	288	448	226
46"	47"	1035	519	757	380	617	310	478	241
50"	51"	1110	557	807	405	658	331	508	256

**CAUTION:** To prevent pinch points that exist when gravity conveyors are permanently attached to power conveyors, use the connector brackets with safety pop-out rollers shown on page 147.



ROLLERS			
BF	WT. (lbs.)	BF	WT. (lbs.)
7"	6.5	31"	20.1
11"	8.8	35"	22.3
15"	11.0	39"	24.6
19"	13.3	43"	26.9
23"	15.6	47"	29.1
27"	17.8	51"	31.4

24 hour shipment

