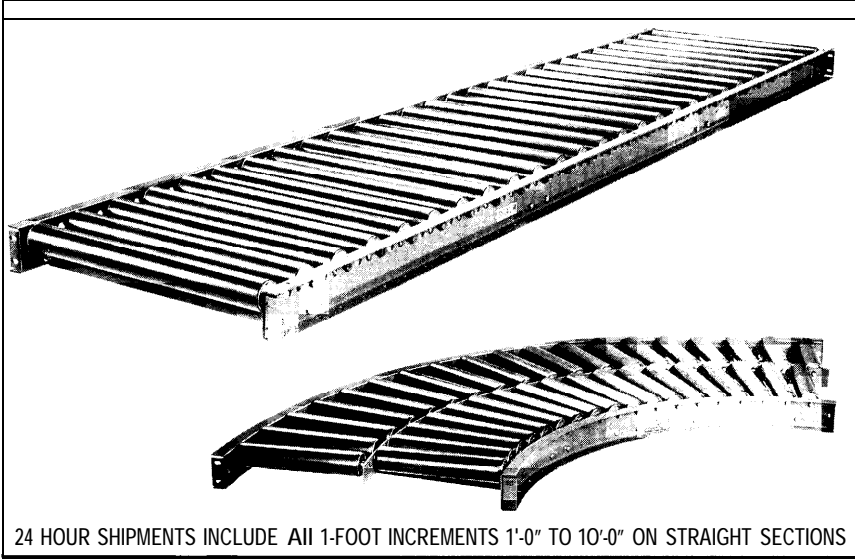


2-1/2" DIA. X 11 GA. STEEL GRAVITY ROLLER CONVEYOR



24 HOUR SHIPMENTS INCLUDE ALL 1-FOOT INCREMENTS 1'-0" TO 10'-0" ON STRAIGHT SECTIONS

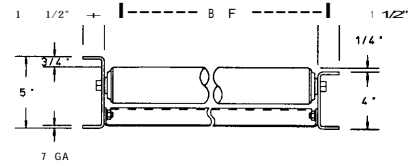
MODEL NO. EXPLANATION

251S* .. 13 .. 3** .. H .. 5

roller no | high/low |
BF RC length/degree

*Specify "251 SC" for curved sections.

**Centers not required for curved sections.



SPECIFICATIONS

ROLLERS: 2-1/2" x 11 ga. steel tubing with flanged type bearings pressed into straight ends.

FRAMES: Formed steel channel 4" X 1-1/2" x 7ga.

BEARINGS: Removable type, heavy duty ball bearings, zinc plated, grease packed.

COUPLINGS: Butt type.

AXLES: 11/16" hex shaft, spring loaded.

CAPACITY: 540 lbs. per roller, or 3400 lbs. maximum distributed live load per 10' section with supports at 10' centers; 7500 lbs. at 5' centers.

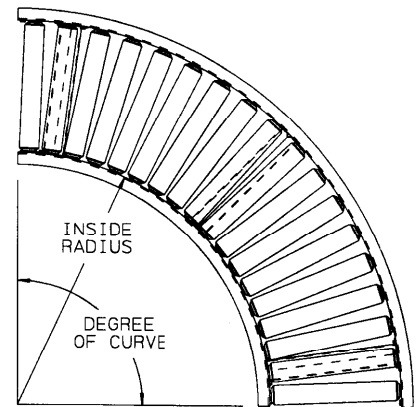
STRAIGHT SECTIONS

		UNIT WEIGHTS (lbs.)									
NOM. RLR. LENGTH	BF	3" RC		4 1/2" RC		6" RC		9" RC		12" RC	
		10'	5'	10'	5'	10'	5'	10'	5'	10'	5'
12"	13"	342	174	281	144	240	114	186	97	161	84
14"	15"	373	191	305	157	237	123	200	104	169	89
16"	17"	405	207	329	169	254	131	210	109	178	93
18"	19"	436	223	353	181	270	140	222	116	187	99
20"	21"	467	239	376	194	287	149	234	123	196	104
22"	23"	499	255	421	206	303	157	246	129	207	109
24"	25"	530	271	425	219	340	166	257	135	214	113
26"	27"	561	287	449	231	337	175	270	141	224	118
30"	31"	625	320	497	256	369	192	296	156	242	128
32"	33"	657	336	522	269	387	202	307	162	251	134
36"	37"	718	368	568	293	419	218	330	174	269	143
38"	39"	749	384	592	305	435	237	342	180	278	158
42"	43"	812	416	640	330	465	244	366	193	296	169
46"	47"	874	449	688	355	495	262	390	206	314	181
50"	51"	937	481	736	379	525	279	414	218	332	192

CAUTION: To prevent pinch points that exist when gravity conveyors are permanently attached to power conveyors, use the connector brackets with safety pop-out rollers shown on page 147.

CURVED SECTIONS

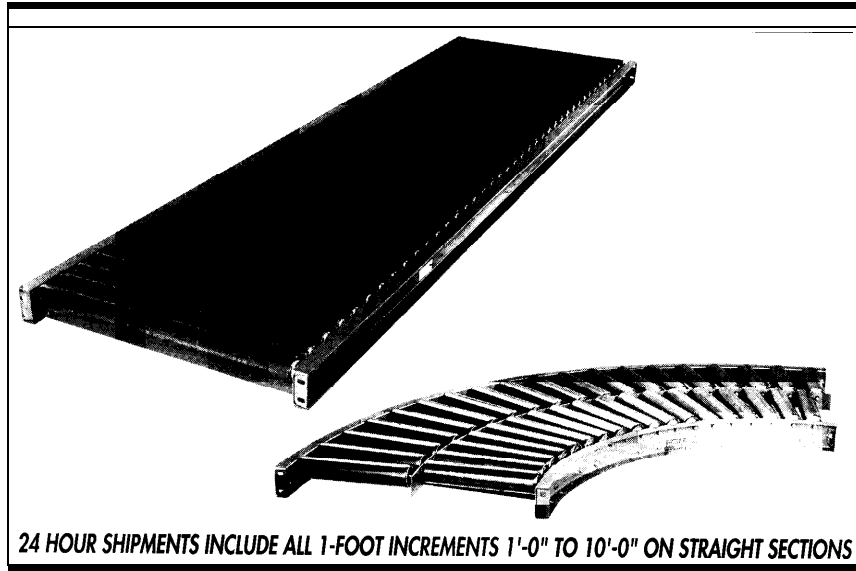
UNIT			90			45		
NOM. RLR. LENGTH	BF	INSIDE RADIUS	ROLLERS PER CURVE	ROLLER PATTERN	WEI GHT (lbs.)	ROLLERS PER CURVE	ROLLER PATTERN	WEI GHT (lbs.)
12"	13"	2'-8 1/2"	18	SINGLE	164	9	SINGLE	83
14"	15"	2'-8 1/2"	18	SINGLE	179	9	SINGLE	90
16"	17"	2'-8 1/2"	18	SINGLE	194	9	SINGLE	98
18"	19"	2'-8 1/2"	18	SINGLE	209	9	SINGLE	105
20"	21"	2'-8 1/2"	18	SINGLE	224	9	SINGLE	113
22"	23"	2'-8 1/2"	18	SINGLE	239	9	SINGLE	120
24"	25"	2'-8 1/2"	18	SINGLE	254	9	SINGLE	128
26"	27"	2'-8 1/2"	18	SINGLE	269	9	SINGLE	135
30"	31"	4'-0"	40	DOUBLE	393	20	DOUBLE	213
32"	33"	4'-0"	40	DOUBLE	411	20	DOUBLE	233
36"	37"	4'-0"	40	DOUBLE	445	20	DOUBLE	241
38"	39"	4'-0"	40	DOUBLE	462	20	DOUBLE	251
42"	43"	4'-0"	40	DOUBLE	497	20	DOUBLE	270
46"	47"	4'-0"	40	DOUBLE	531	20	DOUBLE	289
50"	51"	4'-0"	40	DOUBLE	566	20	DOUBLE	308



24 hour shipment



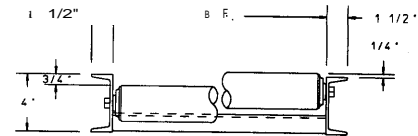
MODEL 25 1 S STRUCTURAL 2-1/2" DIA. X 11 GA. STEEL GRAVITY ROLLER CONVEYOR



MODEL NO. EXPLANATION

251S* -- 13 -- 3* -- H -- 5 -- s
 roller no. | BF | RC | high/low | structural
 length/degree

*Specify "25 1Sc" for curved sections.
 **Centers not required for curved sections.



ROLLERS: 2-1/2" x 11 ga. steel tubing with flanged type bearings pressed into straight ends.

FRAMES: 4" at 5.4 lbs. structural steel channel.

BEARINGS: Removable type, heavy duty ball bearings, zinc plated, grease packed.

COUPLINGS: Butt type.

AXLES: 11 /16" hex shaft, spring loaded.

CAPACITY 540 lbs. per roller, or 3750 lbs. maximum distributed live load per 10' section with supports at 10' centers; 8000 lbs. at 5' centers.

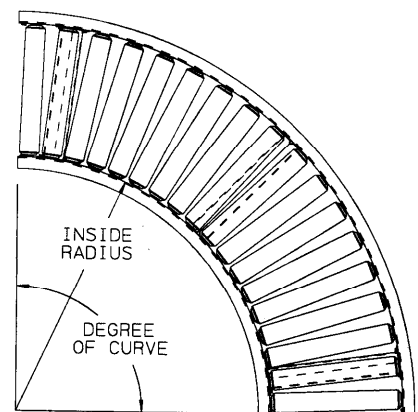
		UNIT WEIGHTS (lbs.)									
NOM. RLR. LENGTH	BF	3' RC		4 1/2' RC		6' RC		9' RC		12' RC	
		10'	5'	10'	5'	10'	5'	10'	5'	10'	5'
12"	13"	365	185	304	155	263	125	209	108	184	95
14"	15"	396	203	328	156	270	135	223	116	192	101
16"	17"	429	219	353	181	278	143	234	121	202	105
18"	19"	460	235	377	193	294	152	246	128	211	111
20"	21"	491	251	400	206	311	161	258	135	220	116
22"	23"	524	267	446	218	328	169	271	141	232	121
24"	25"	555	284	450	232	345	179	282	148	239	126
26"	27"	582	297	470	241	358	185	291	151	245	128
30"	31"	646	330	518	266	390	202	317	166	263	138
32"	33"	678	346	543	279	408	212	338	172	272	144
36"	37"	739	378	589	303	440	228	351	184	290	153
38"	39"	770	394	613	315	456	247	363	190	299	168
42"	43"	833	426	661	340	486	254	387	203	317	179
46"	47"	895	459	709	365	516	272	411	216	335	191
50"	51"	958	491	757	389	546	289	435	228	353	202

CAUTION: To prevent pinch points that exist when gravity conveyors are permanently attached to power conveyors, use the connector brackets with safety pop-out rollers shown on page 147.

Indoff Distributor 860-632-2026

CURVED SECTIONS

UNIT			90*			45* *degrees		
NOM. RLR. LENGTH	BF	INSIDE RADIUS	ROLLERS PER CURVE	ROLLER PATTERN	WEI GHT (lbs.)	ROLLERS PER CURVE	ROLLER PATTERN	WEI GHT (lbs.)
12"	13"	2'-8 1/2"	18	SINGLE	196	9	SINGLE	99
14"	15"	2'-8 1/2"	18	SINGLE	212	9	SINGLE	107
16"	17"	2'-8 1/2"	18	SINGLE	227	9	SINGLE	115
18"	19"	2'-8 1/2"	18	SINGLE	243	9	SINGLE	122
20"	21"	2'-8 1/2"	18	SINGLE	259	9	SINGLE	131
22"	23"	2'-8 1/2"	18	SINGLE	275	9	SINGLE	138
24"	25"	2'-8 1/2"	18	SINGLE	290	9	SINGLE	146
26"	27"	2'-8 1/2"	18	SINGLE	306	9	SINGLE	154
30"	31"	4'-0"	40	DOUBLE	441	20	DOUBLE	237
32"	33"	4'-0"	40	DOUBLE	460	20	DOUBLE	257
36"	37"	4'-0"	40	DOUBLE	495	20	DOUBLE	265
38"	39"	4'-0"	40	DOUBLE	513	20	DOUBLE	276
42"	43"	4'-0"	40	DOUBLE	550	20	DOUBLE	297
46"	47"	4'-0"	40	DOUBLE	586	20	DOUBLE	316
50"	51"	4'-0"	40	DOUBLE	622	20	DOUBLE	336



■ 24 hour shipment