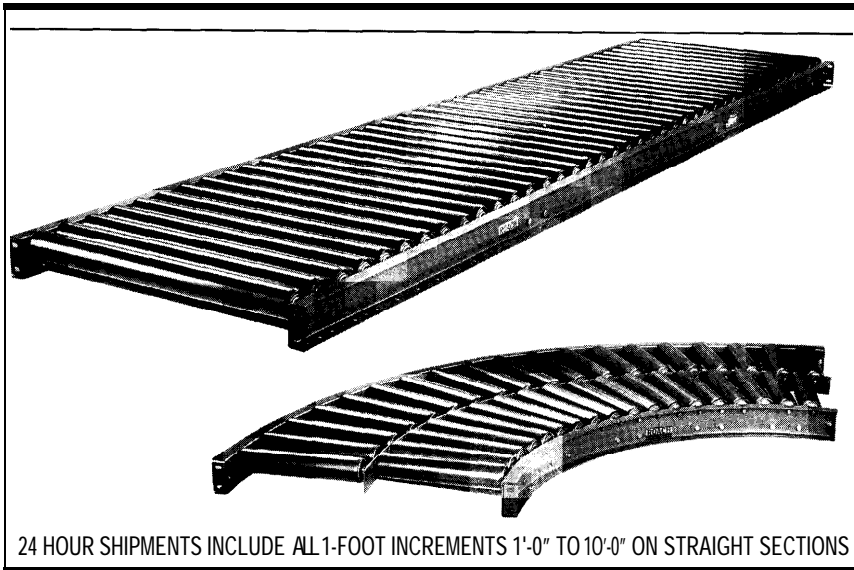


# MODEL 254S 2- 1/2" DIA. X 14 GA. STEEL GRAVITY ROLLER CONVEYOR



24 HOUR SHIPMENTS INCLUDE ALL 1-FOOT INCREMENTS 1'-0" TO 10'-0" ON STRAIGHT SECTIONS

## MODEL NO. EXPLANATION

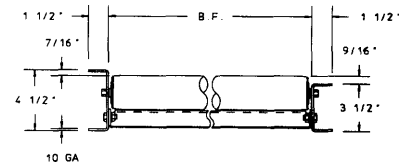
254S\* -- 13 -- 3 \* \* -H -- 4

roller no | | high/low |

BF RC length/degree

\*Specify "254SC" for curved sections.

\*\*Centers not required for curved sections.



## SPECIFICATIONS

ROLLERS: 2-1/2" x 14 ga. steel tubing with smooth swaged ends.

FRAMES: Formed steel channel 3-1/2" x 1-1/2" x 10ga.

BEARINGS: Integral Labyrinth sealed ball bearings, zinc plated, grease packed.

COUPLINGS: Butt type.

AXLES: 7/16" hex shaft, spring loaded.

CAPACITY: 290 lbs. per roller, or 1300 lbs. maximum distributed live load per 10' section with supports at 10' centers; 3200 lbs. at 5' centers.

## STRAIGHT SECTIONS

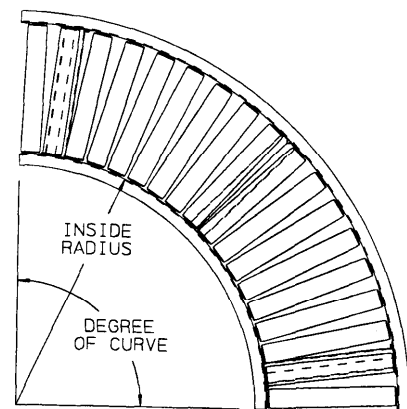
NOM. RLR. LENGTH	BF	UNIT WEIGHTS (lbs.)									
		3" RC		4 1/2" RC		6" RC		9" RC		12" RC	
		10'	5'	10'	5'	10'	5'	10'	5'	10'	5'
12"	13"	206	104	170	87	138	70	116	59	103	53
14"	15"	223	112	186	95	147	75	124	63	108	55
16"	17"	241	121	198	100	155	78	130	66	113	57
18"	19"	258	125	211	107	165	84	137	70	117	60
20"	21"	278	140	227	114	174	88	142	72	122	62
22"	23"	296	149	240	121	184	93	149	76	127	64
24"	25"	314	159	253	125	193	97	155	78	130	66
26"	27"	331	167	266	134	202	102	162	82	136	69
30"	31"	366	185	294	148	219	110	174	88	145	73
32"	33"	387	195	308	155	228	115	181	92	149	76
36"	37"	424	213	338	170	248	125	193	98	158	80
38"	39"	442	222	350	176	257	130	200	102	163	83
42"	43"	478	240	378	190	275	139	213	109	172	88
46"	47"	515	258	405	203	294	149	226	115	182	92
50"	51"	551	277	433	217	312	158	239	122	191	97

CAUTION: To prevent pinch points that exist when gravity conveyors are permanently attached to power conveyors, use the connector brackets with safety pop-out rollers shown on page 147.

## Indoff Distributor 860-632-2026

## CURVED SECTIONS

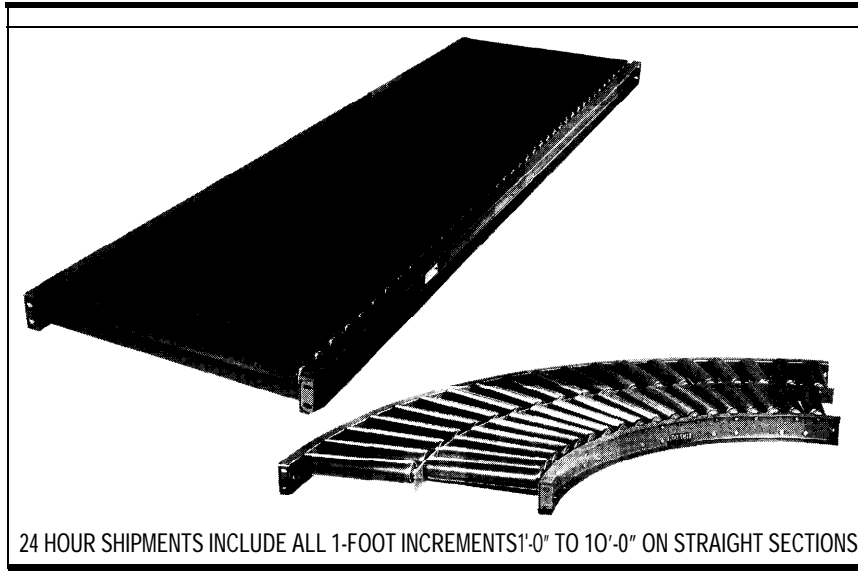
UNIT			90°			45°		
NOM. RLR. LENGTH	BF	INSIDE RADIUS	ROLLERS PER CURVE	ROLLER PATTERN	WEIGHT (Lbs.)	ROLLERS PER CURVE	ROLLER PATTERN	WEIGHT (Lbs.)
12"	13"	2'-8 1/2"	18	SINGLE	116	9	SINGLE	60
14"	15"	2'-8 1/2"	18	SINGLE	127	9	SINGLE	65
16"	17"	2'-8 1/2"	18	SINGLE	140	9	SINGLE	72
18"	19"	2'-8 1/2"	18	SINGLE	151	9	SINGLE	78
20"	21"	2'-8 1/2"	18	SINGLE	163	9	SINGLE	84
22"	23"	2'-8 1/2"	37	DOUBLE	193	17	DOUBLE	99
24"	25"	2'-8 1/2"	37	DOUBLE	204	17	DOUBLE	103
26"	27"	2'-8 1/2"	37	DOUBLE	215	17	DOUBLE	109
30"	31"	4'-0"	40	DOUBLE	254	20	DOUBLE	130
32"	33"	4'-0"	40	DOUBLE	266	20	DOUBLE	136
36"	37"	4'-0"	40	DOUBLE	290	20	DOUBLE	148
38"	39"	4'-0"	40	DOUBLE	302	20	DOUBLE	153
42"	43"	4'-0"	40	DOUBLE	326	20	DOUBLE	165
46"	47"	4'-0"	40	DOUBLE	350	20	DOUBLE	176
50"	51"	4'-0"	40	DOUBLE	374	20	DOUBLE	188



■ 24 hour shipment



# MODEL 254S STRUCTURAL 2-1/2" DIA. X 14 GA. STEEL GRAVITY ROLLER CONVEYOR



24 HOUR SHIPMENTS INCLUDE ALL 1-FOOT INCREMENTS 1'-0" TO 10'-0" ON STRAIGHT SECTIONS

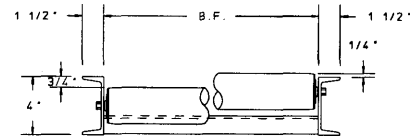
## MODEL NO. EXPLANATION

254S\* -- 13 -- 3\*\* -- H -- 4 -- S

roller no. | | high/low | structural  
BF RC length/degree

\*Specify "254SC" for curved sections.

\*\*Centers not required for curved sections.



## SPECIFICATIONS

ROLLERS: 2-1/2" x 14 ga. steel tubing with smooth swaged ends.

FRAMES: 4" at 5.4 lbs. structural steel channel.

BEARINGS: Integral Labyrinth sealed ball bearings, zinc plated, grease packed.

COUPLINGS: Butt type.

AXLES: 7/16" 6" hex shaft, spring loaded.

CAPACITY: 290 lbs. per roller, or 3750 lbs. maximum distributed live load per 10' section with supports at 10' centers; 8000 lbs. at 5' centers.

## STRAIGHT SECTIONS

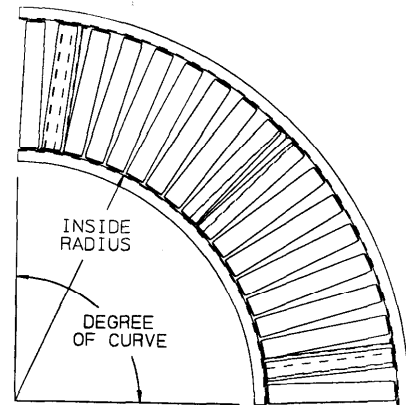
NM RR IN BF		UNIT WEIGHTS (lbs.)									
		3" RC		4 1/2" RC		6" RC		9" RC		12" RC	
		10'	5'	10'	5'	10'	5'	10'	5'	10'	5'
12"	13"	255	129	228	112	187	95	165	84	152	78
14"	15"	273	137	236	120	197	100	174	88	158	80
16"	17"	291	146	248	125	205	103	180	91	163	82
18"	19"	308	150	261	132	215	109	187	95	167	85
20"	21"	329	165	278	139	225	113	193	97	173	87
22"	23"	346	175	291	146	235	119	200	102	178	90
24"	25"	366	185	305	151	245	123	207	104	182	92
26"	27"	378	191	313	160	249	126	209	106	183	93
30"	31"	413	209	341	174	266	134	221	112	192	97
32"	33"	434	219	355	181	275	139	228	116	196	100
36"	37"	471	237	385	194	295	149	240	122	205	104
38"	39"	489	246	397	200	304	154	247	126	210	107
42"	43"	525	264	425	214	322	163	260	133	219	112
46"	47"	562	282	452	227	341	173	273	139	229	116
50"	51"	598	301	480	241	359	182	286	146	238	121

CAUTION: To prevent pinch points that exist when gravity conveyors are permanently attached to power conveyors, use the connector brackets with safety pop out rollers shown on page 147.

Indoff Nationwide Distributors for Roach [www.ahutton.com](http://www.ahutton.com)  
860-632-2026 fax at 2028 web site at [ahutton@ahutton.com](mailto:ahutton@ahutton.com)

## CURVED SECTIONS

UNIT			90°			45°		
NOM RLR. LENGTH	BF	INSIDE RADIUS	ROLLERS PER CURVE	ROLLER PATTERN	WEIGHT (lbs.)	ROLLERS PER CURVE	ROLLER PATTERN	WEIGHT (lbs.)
12"	13"	2'-8 1/2"	18	SINGLE	157	9	SINGLE	81
14"	15"	2'-8 1/2"	18	SINGLE	169	9	SINGLE	86
16"	17"	2'-8 1/2"	18	SINGLE	182	9	SINGLE	93
18"	19"	2'-8 1/2"	18	SINGLE	195	9	SINGLE	100
20"	21"	2'-8 1/2"	18	SINGLE	208	9	SINGLE	107
22"	23"	2'-8 1/2"	37	DOUBLE	239	17	DOUBLE	122
24"	25"	2'-8 1/2"	37	DOUBLE	251	17	DOUBLE	127
26"	27"	2'-8 1/2"	37	DOUBLE	263	17	DOUBLE	133
30"	31"	4'-0"	40	DOUBLE	317	20	DOUBLE	162
32"	33"	4'-0"	40	DOUBLE	330	20	DOUBLE	168
36"	37"	4'-0"	40	DOUBLE	356	20	DOUBLE	181
38"	39"	4'-0"	40	DOUBLE	369	20	DOUBLE	187
42"	43"	4'-0"	40	DOUBLE	395	20	DOUBLE	200
46"	47"	4'-0"	40	DOUBLE	421	20	DOUBLE	212
50"	51"	4'-0"	40	DOUBLE	446	20	DOUBLE	224



24 hour shipment