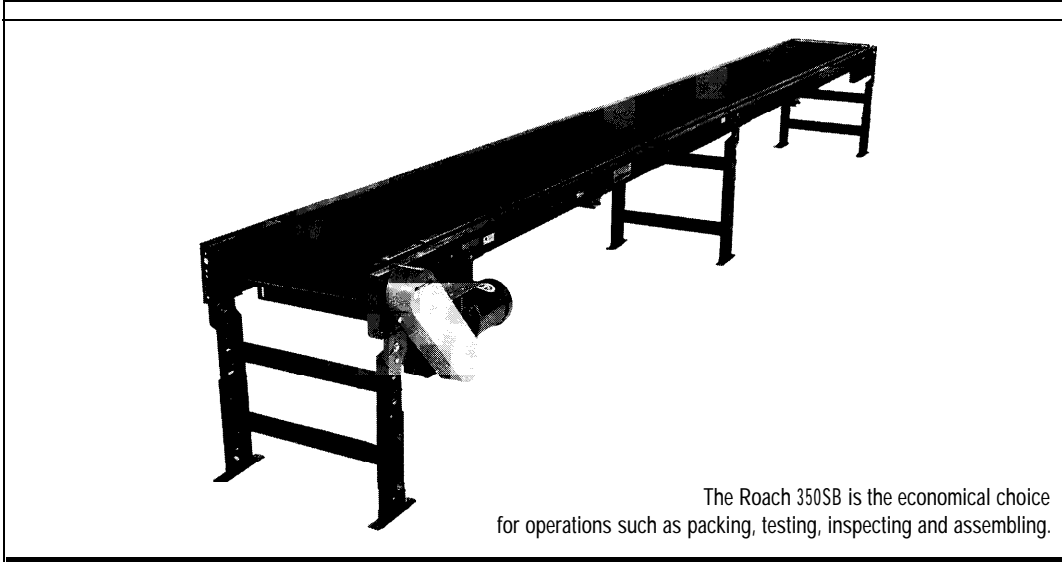


MODEL 350SB SLIDER BED BELT CONVEYOR

Roach sold by
Indoff 860-632-2026



The Roach 350SB is the economical choice for operations such as packing, testing, inspecting and assembling.

SPECIFICATIONS

BELTING: PVC-I 20 black friction surface.

DRIVE PULLEY: 4" dia. with 1-3/16" 6" dia. shaft or 8" dia. with 1-7/16" dia. shaft, both crowned and fully lagged.

TAIL PULLEY: 4" dia., crowned, with 1-3/16" dia. shaft.

END DRIVE: Allows one-direction (unit) operation; add optional center drive for reversible application.

TAKE-UP: Screw type unit at tail pulley provides 12" belt take-up.

BEARINGS: All pulley bearings are precision, heavy duty, lubricated, ball bearing units with cast iron housings.

BELT SPEED: 60 FPM, constant.

RETURN ROLLERS: 1.9" dia., adjustable.

BED: 3-1/2" x 1/1/2" x 10 ga. channel frame with 14 ga. slider bed 9"-27" BF, 12 ga. 33"-39" BF with bed stiffeners.

FLOOR SUPPORTS: 4" dia. drive pulley adjustable 31-1/2" to 40" TOB; 8" dia. drive pulley adjustable 33-1/2" to 40". Supports provided at both ends and each bed joint. Supports can be lagged to floor.

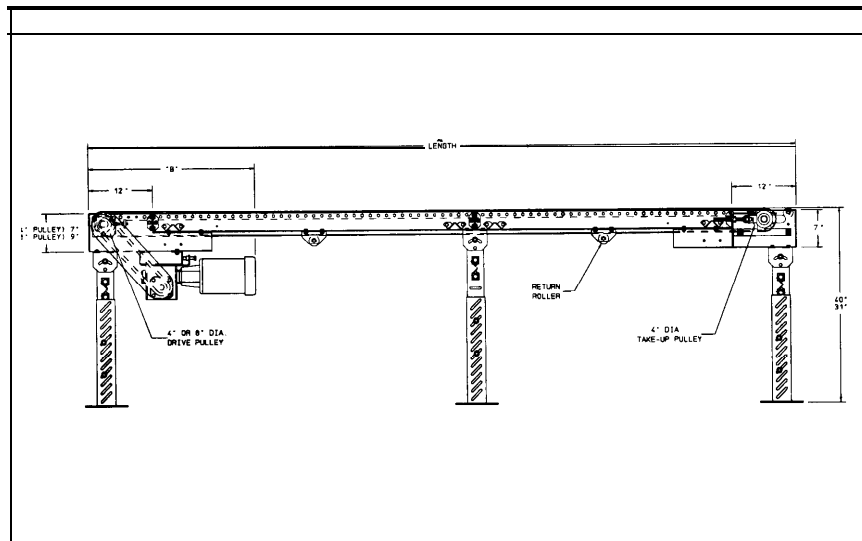
MOTOR DRIVE: 1/3 HP, 230/460/3, 60 cycle, ODP right angle gear motor.

ROLLER CHAIN: Drive pulley is driven

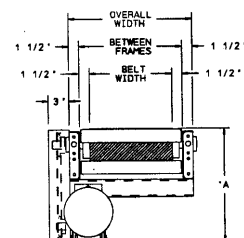
by No. 50 roller chain for 1-1/2 HP or less and No. 60 chain on larger drives. Chain take-up provided on motor base.

ELECTRICAL CONTROLS: Available as an option,

CAUTION: To prevent pinch points that exist when belt conveyors are permanently attached to other conveyors, use the connector brackets with safety pop out roller shown on page 147 (other stationary equipment will require proper guarding and safety devices supplied by others).



HP @ 60 FPM	REDUCER	"A"	"B"
1/3	RDW13120-02	15 - 11 /16"	33-7/32"
1/2	RDW13120-02	15-11/16"	33-7/32"
3/4	RDW13340-02	16-5/16 "	6 "
1	RDW13150-01	17-15/16"	34-5/8"
1-1/2	RDW13150-02	17-15/16"	34-5/8"
2	RDW13200-02	19-5/1 6"	6 "



24 hour shipment

11

SPECIFICATION TABLE

Up to 50'-0" will have a 4" dia. drive pulley, 51'-0" and over will have an 8" dia. drive pulley

CONVEYOR LENGTH		5'	10'	15'	20'	25'	30'	35'	40'	50'	60'	70'	80'	90'	100'
BELT	BF	Unit weights (lbs.)													
6"	9"	244	265	311	331	374	395	437	459	526	591	656	720	784	848
12"	15"	268	299	355	386	442	473	529	560	654	741	830	917	1004	1091
18"	21"	314	369	451	506	587	642	724	779	926	1062	1211	1337	1473	1610
24"	27"	366	422	502	568	662	728	821	887	1059	1209	1382	1541	1701	1860
30"	33"	391	434	535	608	709	782	879	956	1146	1300	1497	1670	1846	2020
36"	39"	428	476	591	677	793	879	990	1080	1301	1477	1707	1908	2112	2313

OPTIONAL EQUIPMENT

BELTING: Black rubber ruff-top; neoprene smooth top with 3/64" cover (black or white - specify); 3-ply friction surface (FS x FS).

CENTER DRIVE: Reversible drive with integral belt take-up of 24". Specify location.

SIDE MOUNTED END DRIVE: Provides minimum overall conveyor height of 7-1/2". Located on either side.

OVERHEAD END DRIVE: Provides minimum overall conveyor height of 7-1/2" (minimizes width). Specify clearance above belt.

AUXILIARY TAKE-UP: Provides 24" of belt take-up. Specify location.

NOSE-OVER: Provides smooth transition from incline to horizontal position. Single nose-over adjusts 0-20*; double nose-over adjusts 0-35*. Feeders also available. *degrees

SIDE TABLES: Available in 9", 15" and 21" widths (14 ga.) one or both sides.

FLOOR SUPPORTS: Other height supports (adjustable or fixed); also casters supports.

UNDERTRUSSED BED: Available to provide clearance underneath unit at bed joint locations. Specify location for undertrussing and desired clearance underneath unit.

CEILING HANGERS: 5/8" dia. threaded rod with hardware to attach rods to conveyor. Provides 6' clearance between ceiling and TOB (furnished in place of floor supports).

GUARD RAILS: 1-3/4" x 1" formed channel, adjusts horizontally to 10" wider than belt and vertically to 6" above belt.

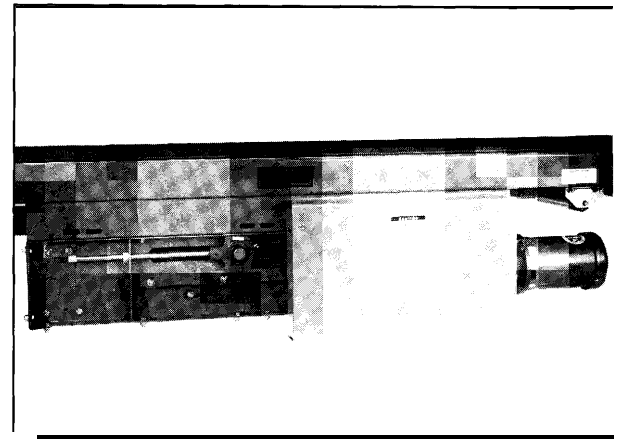
BELT SPEED: 35-120 FPM, constant speed (specify). Other constant or variable speeds available. **NOTE: CAPACITY CHANGES WITH SPEED.**

MOTORS: Available through 2 HP with characteristics such as totally enclosed, single phase, etc.

ELECTRICAL CONTROLS: Manual start/stop push button switch; reversing drum switch; magnetic starter (one direction or reversible); limit switch; photo relay; others available.

LOAD CAPACITY @ 60 FPM			
HP	TOTAL CAPACITY	HP	TOTAL CAPACITY
1/3	300	1	725
1/2	400	1-1/2	1100
3 / 4	575	2	1300

CENTER DRIVE



D.C. VARIABLE SPEED CONTROLLER

