

Tan Nucork Bulletin Boards and Powder Coat Finishes

Tan Nucork Bulletin Boards

- An economical bulletin board surface, Tan Nucork is pure grain natural cork without burlap backing
- Smooth resilient surface remains soft and pliable indefinitely
- Pins and thumbtacks can be inserted easily and are gripped firmly
- Punctures heal quickly; the holding qualities of Nucork are not injured by repeated punctures
- Unmounted Nucork is available in full rolls up to approx. 115' (unmounted Nucork is shipped oversize)
- Mounted Nucork is available in lengths up to 16'
- Standard height is 4'



Item Number	Price Per Sq. Ft.	Approx. Cork Thickness	Backing	Overall Thickness	Standard Lengths**	Weight Per Sq. Ft.
150 (Full Rolls only)	\$ 2.58	1/4"	None	1/4"	Approx. 115'	1/4 lb.
150A (under 200 sq. ft.)	3.18	1/4"	None	1/4"	Approx. 115'	1/4 lb.
150B (over 200 sq. ft.)	3.06	1/4"	None	1/4"	Approx. 115'	1/4 lb.
150FR* (Full Rolls only)	4.70	1/4"	None	1/4"	Approx. 115'	1/4 lb.
150FRA* (under 200 sq. ft.)	5.68	1/4"	None	1/4"	Approx. 115'	1/4 lb.
150FRB* (over 200 sq. ft.)	5.52	1/4"	None	1/4"	Approx. 115'	1/4 lb.
380A	3.76	1/8"	Duracore	1/2"	Up to 16'	3/4 lb.
550	5.32	1/4"	Hardboard	1/2"	Up to 16'	1 1/4 lbs.

*No. 150FR Nucork has a B-Class fire rating based on ASTM E-84 tunnel test as follows: Flame Spread - 65, Smoke Developed - 70. Meets military specification MIL-C-15116, Type II.

**Lengths of rolls vary. Billing will be on basis of actual square footage shipped.

Packing Charge: On all orders of mounted corkboards of less than 200 sq. ft. there is a packing charge of **\$17.00 NET** per order.

Cutting Charge: For cutting Nucork to other than standard sizes add **\$.50 per lin. ft.**

Powder Coat Finishes

- Powder coat finishes are available in a virtual rainbow of contemporary colors. Complete color chart of standard and optional powder coated finishes is available on request. If match is critical, call or write for actual samples.

						Optional Textured Finishes  PES98116 Goldtone Vein  PPLS98550 Antique Copper Vein  PEBS98802 Bonded Silver Vein
						
						
						

Sizes up to and including 4' x 4' and unmounted cork up to 120 lbs. can ship UPS. Larger sizes will ship by motor freight class 70.

Claridge Cork Bulletin Board



Claridge Cork Bulletin Board

Environmentally Friendly. Always Looks Like New.

Claridge Cork Bulletin Board is made from pure natural ingredients that combine under heat and pressure to create a smooth, uniformly dense, suede-like surface of unsurpassed beauty and durability. Expanded range of 12 contemporary colors that go all the way through to the burlap backing. Plus all of the following features...

- Self healing surface.
- Soil resistant, washable surface.
- Tacks insert easily, are gripped firmly.
- Low light reflection.
- Dimensionally stable all directions.
- Will not warp or crumble.
- Naturally inhibits bacterial growth.
- No toxins or harmful emissions.
- Meets ASTM E-84 and meets or exceeds MIL-C-15116-C, Type 1.

Claridge Cork Bulletin Board Colors



1/4" Unmounted Cork

- 1100 Tan
- 1105 Desert Sand
- 1107 Denim
- 1109 Buff
- 1110 Fawn
- 1111 Smoke
- 1113 Steel Gray
- 1132 Black



- 1133 Green
- 1134 Midnight
- 1135 Brick
- 1136 Graphite

1/4" Mounted Cork

- 1106 Tan
- 1112 Desert Sand
- 1121 Denim
- 1122 Steel Gray
- 1126 Fawn
- 1127 Smoke
- 1131 Buff
- 1142 Black



- 1143 Green
- 1144 Midnight
- 1145 Brick
- 1146 Graphite

Description	Price Per Sq. Ft.	Approx. Cork Thickness	Backing	Overall Thickness	Standard Lengths	Weight Per Sq. Ft.
1/4" Unmounted Cork A (under 200 sq. ft.)	\$ 7.56	1/4"	Heavy Burlap	1/4"	Up to 95'	1 lb.
1/4" Unmounted Cork B (over 200 sq. ft.)	7.36	1/4"	Heavy Burlap	1/4"	Up to 95'	1 lb.
1/4" Unmounted Cork 4' Roll	5.68	1/4"	Heavy Burlap	1/4"	95'	1 lb.
1/4" Mounted Cork	9.42	1/4"	Burlap on Hardboard	1/2"	Up to 16'	2 lbs.

Note: Standard height is 4'. Not all colors stocked at all locations. Contact the Claridge location nearest you for availability.

Color samples are reproduced with reasonable accuracy. If match is critical, call or write for actual sample.

STANDARD SIZES: Mounted and Unmounted Bulletin Boards are priced on the basis of 4' height and 1' increments (up to 16') in length. All unmounted Claridge Cork is shipped oversize for cutting to exact size on the job.

FULL ROLLS: Lengths of rolls vary. Invoicing will be on the basis of actual square footage shipped. All rolls are figured on the basis of full 4' heights.

CUTTING CHARGE: For cutting to other than standard sizes (both vertical and/or horizontal) add **\$.50 per lin. ft.** for cutting to smaller sizes.

PACKING CHARGE: On all orders of mounted corkboards less than 200 sq. ft. there is a packing charge of **\$17.00 NET.**

ADHESIVES:

No. 15 Adhesive for erecting unmounted bulletin boards. Coverage varies depending on wall conditions (10 lbs.) **\$ 29.50 per gallon**

No. 16A Adhesive for erecting mounted bulletin boards or chalkboards. Coverage approx. 80 sq. ft. per gallon. Available in 1 and 5 gallon pails and in cartons of four 1 gallon pails.

Price 16A (1 gal. pail) **\$ 31.00**

Price 16A-4G (4-1 gal. pails) **116.00**

Price 16A-5G (5 gal. pail) **150.00**

Unmounted cork up to 120 lbs. and mounted cork up to and including 4' x 4' can ship UPS. Balance of items shipped motor freight class 70.

Designer Fabric Bulletin Boards

Designer Series Bulletin Boards

- Fabric meets ASTM-E 84 Flame Tunnel Test Class "A" Rating
- 100% polyester wall and panel fabric
- Available in 12 designer colors that will match or color coordinate with nearly every decor
- Soil and stain resistant
- Offered in laminated panel form, fabric with cork underlay, or as fabric only (hangers not included)

No. 3102

No. 3102EW

No. 3104



Number	Price per Sq. Ft.	Description	Maximum Length	Weight Lbs.
3100		Fabric on cork underlay - Cut to size		
3100A	\$ 6.70	Less than 200 sq. ft.	16'	1/2
3100B	6.36	200 sq. ft. or more	16'	1/2
3102	7.70	Fabric on cork underlay on 1/4" hardboard - 1/2" O.A.	16'	1-1/2
3102EW	8.24	Fabric on cork underlay on 1/4" hardboard with edges wrapped - 1/2" O.A.	16'	1-1/2
3104	5.56	Fabric on 7/16" fire retardant Duracore	12'	1
3104EW	6.10	Fabric on 7/16" fire retardant Duracore with edges wrapped	12'	1
3106	1.94	Designer Fabric only - Full Rolls	165'	1/8
3106A	2.38	Designer Fabric only - Cut to Size	165'	1/8

STANDARD SIZES: All Designer Series Bulletin Boards (except 3106) will be priced on the basis of 4' height and 1' increments in length. No. 3100 may be shipped oversize for cutting to exact size on job.

No. 3106 FABRIC ONLY: Cut to size will be billed on basis of 5' increments in height and 1' increments in length. Material is 66" wide. Lengths of rolls vary from 165' to 180'. Billing will be based on actual length shipped.

CUTTING CHARGE: For cutting to non-standard sizes (except 3106) add \$.50 per lin. ft.

PACKING CHARGE: For Designer Series Bulletin Boards (except Nos. 3100 and 3106) add \$17.00 NET on all orders of less than 200 sq. ft.

ADHESIVE: Hangers not included. See page 33 for Adhesive prices.

Designer Series Fabric Colors



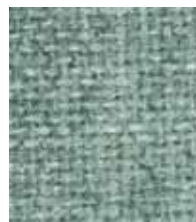
No. 1684
Noir



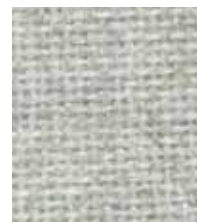
No. 1688
Seafoam



No. 1689
Wedgewood



No. 1690
Gray Mix



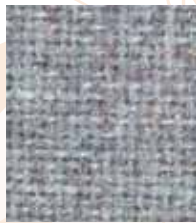
No. 1691
Quartz



No. 1692
Wheat



No. 1694
Blue Topaz



No. 1695
Amethyst



No. 1696
Thistle



No. 1697
Mulberry



No. 1698
Pearl



No. 1699
Quarry

Color samples are reproduced with reasonable accuracy. If match is critical call or write for actual samples.

Size up to and including 4' x 4' can ship UPS. Balance of items ship motor freight class 70.

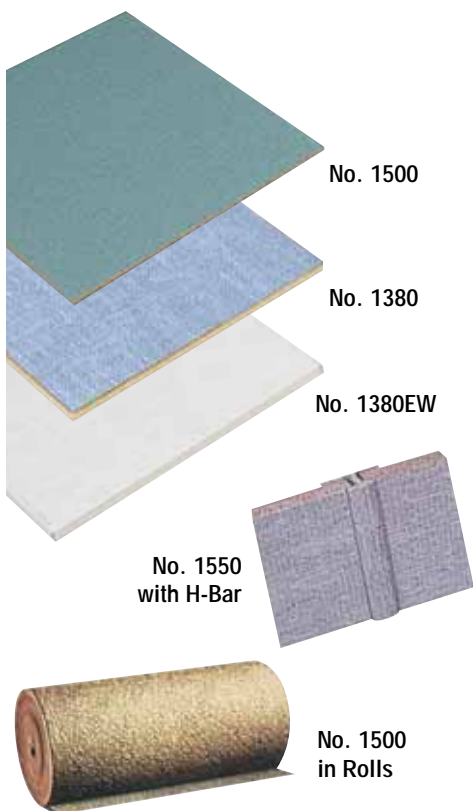
Fabricork Vinyl Bulletin Boards

Fabricork Colors

This superior quality fabric will wear almost indefinitely and stay new-looking for years.

- 20 beautiful colors
- Fabricork is entirely washable; spots and soil wash away with household soap and water
- Vinyl fabric meets or exceeds federal specification CCC-W-408A

Note: Color swatches may not be an exact match - send for actual sample if color is critical.



F581 Academy Gray



F560 Dusk Blue



B221 Beige



C623 Slate Gray



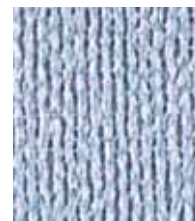
F573 Pearl Gray



F559 Dawn Blue



B220 Antique White



C621 Opal



F595 Slate Green



F593 Mauve



F578 Off White



C622 Jade Mist



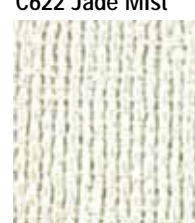
F577 Mist Green



F580 Blush



F571 Champagne



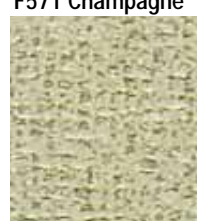
C620 Dover



F223 Frost



F592 Cream



T422 Natural



T421 White

STANDARD SIZES: Fabricork boards are priced on the basis of 4' height and 1' increments in length. Any size other than standard will be priced at the next largest standard size from which they are cut. For cutting to other than standard size **add \$.50 per lin. ft.**

PACKING CHARGE: On all Fabricork orders of less than 200 sq. ft. (except No. 1500) **ADD \$17.00 NET.**

EDGE-WRAPPED: EW after item number indicates edges are wrapped.

Note: Two pieces of 2' high edge wrapped Fabricork cannot be cut from one piece 4' high. You will have to pay for 4' height when edge wrapping is required.

ADHESIVE: Hangers are not included. We recommend 16A adhesive. See page 33.

FABRIC COVERED H BAR: Use to join two or more panels. Price in 1' increments. 12' maximum length.

Price per Lineal Foot \$ 3.12

Number	Price Sq. Ft.	Description	Approx O.A. Thickness	Standard Lengths	Weight Sq. Ft.
1380	\$ 5.08	Fabric on cork underlay on Duracore	1/2"	Up to 16'	1 lb.
1380EW	5.68	Fabric on cork underlay on Duracore	1/2"	Up to 16'	1 lb.
1381FR	4.56	Fabric on flame retardant Duracore*	1/2"	Up to 12'	1 lb.
1381FREW	5.10	Fabric on flame retardant Duracore*	1/2"	Up to 12'	1 lb.
1500 Full Rolls	3.80	Fabric on cork underlay	1/4"	**100'	1/2 lb.
1500A Under 200 sq. ft.	4.36	Fabric on cork underlay	1/4"	**Up to 100'	1/2 lb.
1500B Over 200 sq.ft.	4.10	Fabric on cork underlay	1/4"	**Up to 100'	1/2 lb.
1550	6.30	Fabric on cork underlay on Hardboard	1/2"	Up to 16'	1-1/2 lbs.
1550EW	7.24	Fabric on cork underlay on Hardboard	1/2"	Up to 16'	1-1/2 lbs.

*Fire retardant Duracore Backer Board has a Class A Fire Rating per ASTM E84 as follows - Flame Spread 25, Smoke Developed 20.

**All #1500 Fabricork is shipped oversize for cutting to exact size on job.

Sizes up to and including 4' x 4' and approx. 150 sq. ft. of 1500 can ship UPS. Larger sizes will be shipped by motor freight class 70.

Hook-Fab Bulletin Board Colors



No. 941 Granite



No. 948 Sapphire



No. 949 Cloud



No. 946 Gypsy Blue



No. 947 Black

No.	Price Sq. Ft.	Description	Max. Length	Wt. Lbs.
930		Fabric on cork underlay		
930A	\$ 7.16	Cut to Size - less than 200 sq. ft.	16'	1/2 lb.
930B	6.94	Cut to Size - 200 sq. ft. or mor	16'	1/2 lb.
934	8.14	Fabric on cork underlay on hardboard	16'	1-1/2 lbs.
934EW	8.68	Same as No. 934, except edges are wrapped	16'	1-1/2 lbs.
935	6.10	Fabric on fire retardant Duracore	12'	1 lb.
935EW	6.64	Same as No. 935, except edges are wrapped	12'	1 lb.
936	2.84	Hook-Fab fabric only - 60" wide - Stocked at factory only.	135'	1/16 lb.
923		Claridge Self-gripping Hooktape, pre-glued, pressure-sensitive back, available in 1" wide by 7' long rolls		

Price per roll - \$14.00. Easily cut to size.

ADHESIVE - Coverage averages 80 sq. ft. per gal. Weight per gallon is approx. 10 lbs.

No. 15 Adhesive for mounting bulletin board sheets not laminated to a backer board
Price per gallon \$ 29.50

No. 16A Adhesive for mounting chalkboards, bulletin boards, chalkboard skins and mounted bulletin board panels. (see page 30 for options) Price per gallon \$.31.00.

No. 17 Adhesive use with No. 936 Hook-Fab fabric, No. 3106 Designer fabric or Fabricork fabric only. Price per gallon \$ 48.00

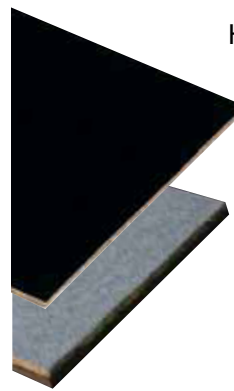
Hook-Fab Bulletin Boards and Wood Finishes

Hook-Fab Wall Covering and Bulletin Boards

Hook-Fab is a versatile product that can be used with hooktape well as thumbtack and pushpin. We offer it in laminated panel form, fabric with cork underlay or as fabric only.

- Available in five pleasing, vibrant colors
- Renowned for its resistance to soil, staining and abrasion
- Resists moisture and mildew
- Lightweight and pliable, yet durable enough to stand up to heavy usage

Note: Color swatches may not be an exact match. Send for actual sample if color is critical.



Hook-Fab Bulletin Boards

No. 930
Hook-Fab on
cork underlay

No. 934
Hook-Fab on cork
underlay on 1/4"
hardboard

GENERAL INFORMATION

STANDARD SIZES: All Hook-Fab bulletin boards (except No. 936 which is 60") will be priced on the basis of 4' height and 1' increments in length. No. 930 may be shipped oversize for cutting to exact size on job.

CUTTING CHARGE: For cutting to other than standard sizes (both vertical and/or horizontal) \$.50 per lin. ft.

PACKING CHARGE: For all Hook-Fab orders (except No 930 and No. 936) less than 200 sq. ft. \$17.00 NET.

Note: No hangers included with edge-wrapped material. Adhesive will be required.

Sizes up to and including 4' x 4' can ship UPS. Larger sizes will be shipped by motor freight class 70.

Wood Finishes

Wood finish color samples are reproduced with reasonable accuracy. If match is critical call or write for actual samples.

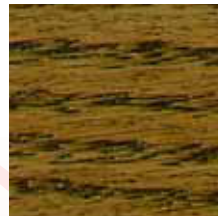
For custom match finish, add \$100.00 net.



Walnut Natural



Walnut Oil



Mahogany Stain



Pickled Oak



Click for
Staining
Rules & Tips

add 5% to
prices

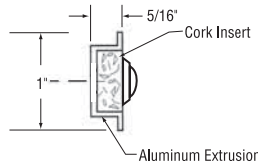
Map, Display and Exhibit Rails



No. 51 Map Rail

- Easily installed on wood or metal trim or directly to wall
- Heavy-gauge extruded aluminum with tan (unless otherwise specified) cork insert
- Approximately 1" wide; available in 6, 8, 10, 12 and 16 foot lengths

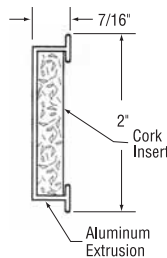
Weight per lineal foot 1/4 lb.



No. 74 Deluxe Map and Display Rail

- Furnished with 1-5/8" wide tan (unless otherwise specified) cork insert
- No. 74 or 74D (no insert) can be screwed directly to wood, plaster or block walls
- Extruded aluminum rail is 2" wide overall; available in 6'3", 8'6", 10'6", 12'6" and 17' lengths.

Weight per lineal foot 1/2 lb.

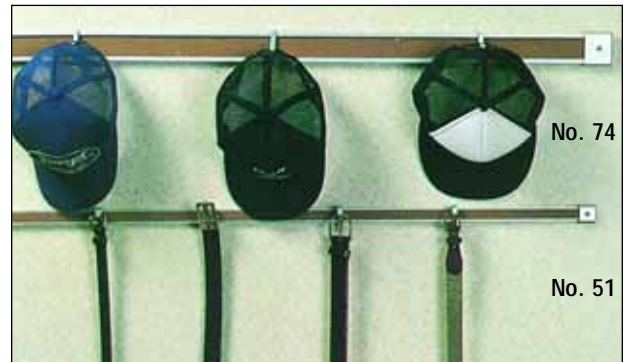
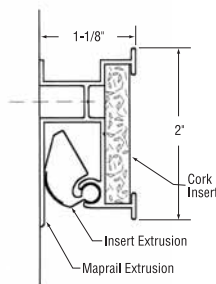


No. 79 Hang-Tight Rail System

- Combines standard map and display rail with a specially designed extrusion that holds posters, pamphlets, blueprints, etc. securely in place, without tacking
- For easy removal, simply pull up and out
- Utilize tackable display rail insert for other materials
- Insert is available in bulletin board colors shown on pages 30 - 33
- Both the rail and the gripping mechanisms are made of heavy-gauge extruded aluminum
- Compatible with No. 74 Map Rail accessories

Weights approx. 1 lb. per lineal foot.

Number	Price	Length
HT79-2	\$ 35.00	20"
HT79-4	48.50	40"
HT79-6	65.50	60"
HT79-8	79.50	80"



No. 51 Rail		No. 74 Deluxe Rail		Description	
Number	Price	Number	Price		
No. 51	\$ 2.62 ft.	No. 74	\$ 3.82 ft.	Less than 100 lineal ft.	
No. 51A	2.26 ft.	No. 74A	3.56 ft.		100 to 200 lineal ft.
No. 51B	2.12 ft.	No. 74B	3.36 ft.		200 lineal ft. and over
No. 51D	Display Rail without cork insert. Deduct \$.50 per lineal foot from above prices.				
No. 74D	Display Rail without cork insert. Deduct \$1.00 per lineal foot from above prices.				
No. 51C	.90 ea.	No. 76	1.16 ea.	Plastic Map Hooks	
No. 51M	.90 ea.	No. 76M	1.16 ea.	Metal Map Hooks	
No. 51RB	6.08 pr.	No. 76RB	6.08 pr.	Roller Brackets	
No. 51FH	5.58 ea.	No. 76FH	5.58 ea.	Flag Holders	
No. 51ES	1.58 ea.	No. 74ES	1.96 ea.	End Stops	
No. 52ES	.62 ea.	No. 75ES	.90 ea.	Flat End Stops	

EDR Exhibit Rail

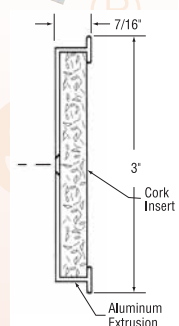
- An attractive and economical way of adding exhibit space.
- EDR Exhibit and Display Rail is 3" wide and features an F560 Dusk Blue Fabriccork tackable insert. (Specify color for insert or dusk blue will be furnished. See page 32 for colors.)
- Mounts with 3/4" flat head screws (furnished) or with your two sided tape

Weights approx. 1/2 lb. per lineal foot.



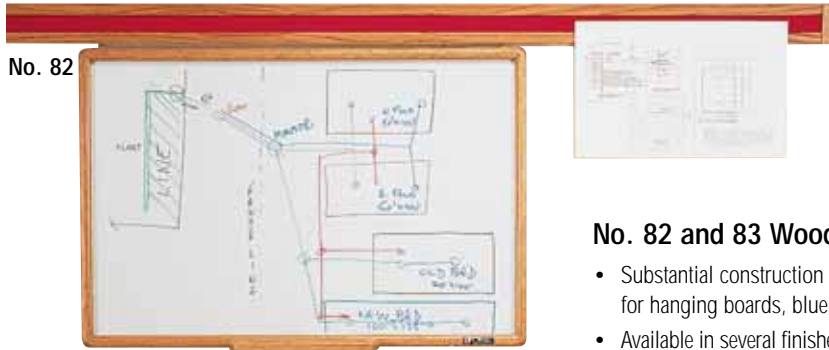
EDR Exhibit Rail

Single Packed		6-Packed		Length
Number	Price	Number	Price / Ctn.	
EDR3	\$ 27.50	EDR3-6	\$ 120.00	3'
EDR4	33.50	EDR4-6	146.00	4'
EDR6	43.50	EDR6-6	194.00	6'
EDR8	54.50	EDR8-6	247.00	8'
EDR12	76.00	EDR12-6	352.00	12'



Lengths thru 8'6" long can ship UPS. Lengths over 8'6" long will be shipped by motor freight class 70.

Clip Strip and Display Rail - Aluminum and Wooden



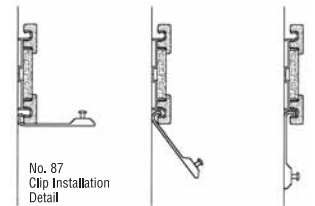
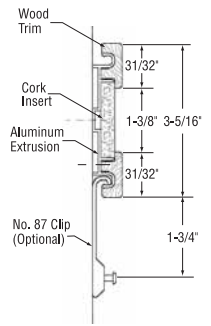
Number	Price	Width	Length	Wt. Per Foot
WDR82-2	\$ 49.50	3"	2'	5/8 lbs./ft.
WDR82-4	67.00	3"	4'	5/8 lbs./ft.
WDR82-6	87.50	3"	6'	5/8 lbs./ft.
WDR82-8	103.00	3"	8'	5/8 lbs./ft.
WDR83-2	51.50	4"	2'	3/4 lbs./ft.
WDR83-4	68.50	4"	4'	3/4 lbs./ft.
WDR83-6	89.00	4"	6'	3/4 lbs./ft.
WDR83-8	114.00	4"	8'	3/4 lbs./ft.

For additional end stops 3" **WDR82ES** \$ 3.36 ea.
 4" **WDR83ES** \$ 3.44 ea.

No. 87 Hanging Clips
 (use with WDR82 and WDR83 rails) \$ 2.92 ea.

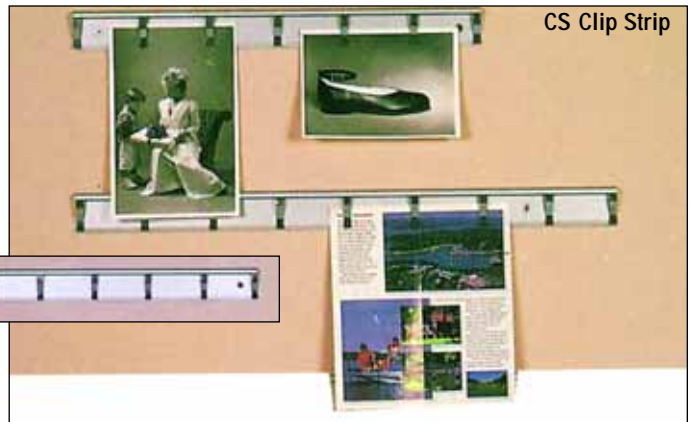
No. 82 and 83 Wooden Display Rail

- Substantial construction makes the Wooden Display Rail invaluable for hanging boards, blueprints, maps, directories, etc.
- Available in several finishes as well as unfinished to be painted or finished on job to match existing walls.
- Natural oak finish furnished unless otherwise specified.
- Available in 2', 4', 6' and 8' lengths and in two widths - approximately 3" wide with a 1-1/2" tackstrip; and approximately 4" wide overall with a 2-1/2" wide tackstrip.
- Rail mounts directly to the wall and can butt to door facings or corner moldings.
- Wooden end stops (furnished) provide a finished look in any length.
- Tackable inserts, over 50 colors to choose from, can coordinate with or complement your room's color scheme (See pages 30 - 33 for materials and colors available.)
- Utilize optional No. 87 Clips for hanging small boards that use keyhole hangers - chalkboards, markerboards, directories, etc.



CS Clip Strip

- Heavy, satin-anodized, aluminum strip with steel clips on 3" centers
- Installs directly to walls with screws, in predrilled holes, or with double sided tape (screws and tape supplied)
- Single sheets of paper or heavy posters can be displayed without tape, tacks or pins
- New material can be inserted or removed anywhere along the strip without disturbing other displayed items

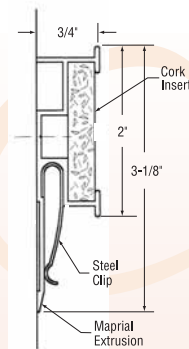


Single Packed		6 Packed		Size
Number	Price	Number	Price / Ctn.	
CS18	\$ 21.50	CS18-6	\$ 99.50	18"
CS24	24.00	CS24-6	111.00	24"
CS36	27.00	CS36-6	125.00	36"
CS48	31.00	CS48-6	143.00	48"
CS60	35.00	CS60-6	163.00	60"

Weight per ft. 1/4 lb. Other lengths available on request.

No. 94 Combination Map Rail and Clip Strip

- Combined utility of a clip strip and a display rail in one piece
- Rail is made of the same heavy-gauge extruded aluminum as the No. 74 Map and Display Rails
- Uses standard accessories for the No. 74 Map Rail (See page 34 for pricing information.)
- Factory installed clips (3" on center) are perfect for presentations using drawings, photographs, maps, etc.
- 1-5/8" tackable display rail insert is available in any of our bulletin board colors shown on pages 30 - 33
- Extruded aluminum rail is approximately 3-1/4" wide overall and is available in 2', 4', 6' and 8' lengths



Number	Price	Length
CMR94-2	\$ 33.50	2'0"
CMR94-4	45.50	4'0"
CMR94-6	60.50	6'0"
CMR94-8	73.00	8'0"

All items on this page can ship UPS.