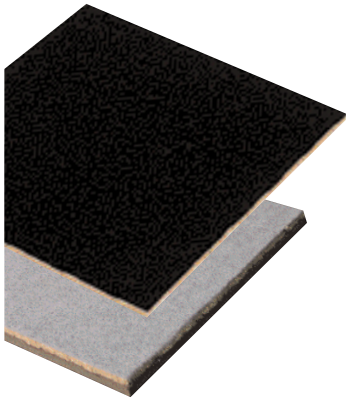


HOOK-FAB

HOOK-FAB IS A HOOK-AND-LOOP COMPATIBLE NON-WOVEN 100% POLYESTER FABRIC PRODUCED BY HIGH DENSITY NEEDLING AND THERMAL BONDING. NO OTHER COMPONENTS OR MATERIALS ARE USED IN THE PROCESS OR MANUFACTURE. HOOK-FAB IS SAFE, NON TOXIC, RECYCLABLE AND ENVIRONMENTALLY FRIENDLY.

HOOK-FAB BULLETIN BOARDS:

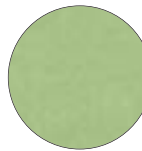


No. 930
Hook-Fab on cork
underlay

No. 934
Hook-Fab on cork
underlay on 1/4"
hardboard

HOOK-FAB: COLOR OPTIONS

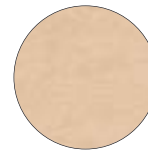
COLORS ARE REPRODUCED WITH REASONABLE ACCURACY. IF MATCH IS CRITICAL, CALL OR WRITE FOR SAMPLES.



970 LIME



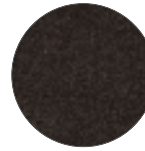
971 CHILI PEPPER



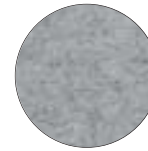
972 SAND



974 DARK BLUE



975 LIGHTSOUT



973 SILVER

HOOK-FAB

NUMBER	DESCRIPTION	MAX LENGTH	WEIGHT SQ. FT.	PRICE SQ. FT.
930	Fabric on cork underlay			
	Cut to Size – Less than 200 sq. ft.	16'	1/2	\$7.54
	Cut to Size – 200 sq. ft. or more	16'	1/2	7.30
934	Fabric on cork underlay on hardboard	16'	1-1/2	9.06
934EW	934 with edges wrapped	16'	1-1/2	9.66
935	Fabric on fire retardant Duracore	12'	1	6.50
935EW	935 with edges wrapped	12'	1	7.10
936	Hook-Fab fabric only – 60" wide	135'	1/16	3.12

HOOKTAPE

923	Self gripping Hooktape, pre-glued, pressure sensitive back, available in 1" x 7' long rolls			15.00
-----	---	--	--	-------

FEATURES:

- Hook-Fab can be used with hooktape as well as thumbtacks and pushpins.
- Offered in laminated panel form, fabric with cork underlay or as fabric only
- Hook-Fab is renowned for its resistance to soil and staining and will not fade
- Lightweight and pliable, yet durable enough to stand up to heavy use, Hook-Fab combines good looks with superior performance

STANDARD SIZES:

- Hook-Fab panels (except 936 which is 60" wide) are priced on the basis of 4' height and 1' increments in length. No. 930 may be shipped oversize for cutting to actual size on job

CUTTING CHARGE:

- Cutting to other than standard sizes adds \$.58 per lin. ft.

PACKING CHARGE:

- A \$36.00 packing charge will be added to orders for less than 200 sq. ft. of mounted Hook-Fab panels

Note: Cutting Charge and Packing Charge do not apply to No. 936. No hanging devices are included with edge-wrapped material.



Indoff
www.ahutton.com
(860)632-2026

DELIVERY INFORMATION:

Unmounted materials up to 120 lbs. & mounted panels up to 4' x 4' can Ship UPS. Freight Class 70.