

FREESTANDING DIRECTORIES:



565 SERIES FREESTANDING DIRECTORY

| NUMBER | DOORS | SIZE (HXW) | WEIGHT | PRICE |
|--------|-------|------------|----------|-----------|
| 565AVF | 1 | 36" x 24" | 90 lbs. | \$1772.00 |
| 565BVF | 1 | 36" x 36" | 110 lbs. | 1980.00 |
| 565CVF | 2 | 36" x 48" | 140 lbs. | 2692.00 |

FEATURES:

- Directory Cabinet made from satin anodized aluminum tubing is 72" high overall; 2" deep outside; 1" inside
- Changeable letter panel is felt or vinyl, grooved on 1/4" centers; specify color
- 3/16" tempered glass door hung on piano hinge and equipped with flat key tumbler lock

OPTIONS:

- For Medium or Dark Bronze anodize finish in lieu of Satin Anodize specify 565BA add and add \$331.00.
- For Powder Coat finish in lieu of satin anodize, specify 565PC add and add \$218.00.



W555 SERIES OPEN FACE, FREESTANDING DIRECTORY

| NUMBER | FINISH | WEIGHT | PRICE |
|--------|----------------|---------|----------|
| W555N | Oak Natural | 60 lbs. | \$824.00 |
| W555M | Oak Medium | 60 lbs. | 824.00 |
| W555D | Oak Dark | 60 lbs. | 824.00 |
| W555WN | Walnut Natural | 60 lbs. | 940.00 |
| W555WO | Walnut Oil | 60 lbs. | 940.00 |
| W555MS | Mahogany Stain | 60 lbs. | 891.00 |
| W555MA | Maple | 60 lbs. | 940.00 |
| W555CH | Cherry | 60 lbs. | 979.00 |

FEATURES:

- Directory panel, in felt or vinyl grooved on 1/4" centers; specify type and color
- Overall height is 60"



W556 SERIES CLASSIC STYLE FREE-STANDING DIRECTORY

| NUMBER | PANEL | SIZE (HXW) | WEIGHT | PRICE |
|---------|-------|------------|---------|-----------|
| W556F | Felt | 24" x 18" | 28 lbs. | \$1477.00 |
| W556V | Vinyl | 24" x 18" | 28 lbs. | 1477.00 |
| W556-1F | Felt | 30" x 24" | 32 lbs. | 1424.00 |
| W556-1V | Vinyl | 30" x 24" | 32 lbs. | 1424.00 |

FEATURES:

- Adjustable height easel directory with felt or vinyl letter panel grooved on 1/4" centers
- Wood frame directory panel – locks into desired position on the pedestal by adjusting two wing nuts
- Panel height adjusts from 57" to 60" (O.A. height is 64")
- Directory panel and easel can be used separately

Note: Shipped KD in two cartons.

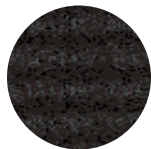
OPTIONS:

- See page 79 for optional woods. If required, specify type of wood and finish and add \$71.00.
- For porcelain enamel steel markerboard panel in lieu of directory, specify and use same price

2009 Prices
in 08 catalog

VF FELT OR VINYL DIRECTORY PANELS:

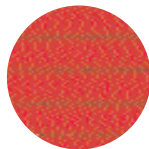
MATERIAL OPTIONS



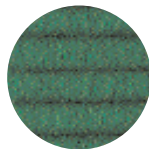
BLACK



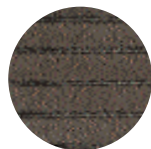
GRAY



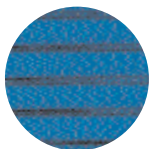
RED



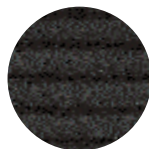
GREEN



587 BROWNVINYL



585 BLUEVINYL



589 BLACKVINYL

VF FELT OR VINYL DIRECTORY PANELS

| NUMBER | WEIGHT | PRICE |
|----------|------------------------|---------------------|
| VF Panel | 2-1/2 lbs. per sq. ft. | \$15.00 per sq. ft. |

FEATURES:

- Directory panels are grooved 1/4" centers
- Specify type of material and color
- Maximum size for felt is 48" (H) x 72" (W)
- Maximum size for vinyl is 48" (H) x 48" (W)

Note: Unframed panels are 1/2" thick

Indoff
www.ahutton.com
(860)632-2026

Note: For optional Roman Style Directory Letters and Letter Storage Boxes, see page 68

DELIVERY INFORMATION:
Freight Class 100 for Directories.
Freight Class 70 for Unframed Directory Panels.