

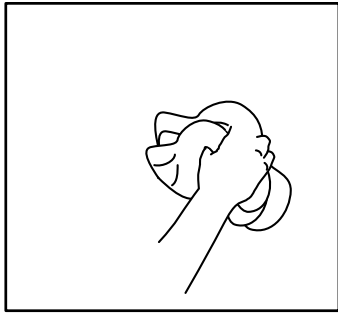
## SMOOTH Indoor Walls - Application Method 1: Vertical

Orientation: Vertical (*graphic is taller than it is wide*)  
Imaging Method: Inkjet printed, Screen printed, Electrostatically printed, Offset printed

Please review the instructions on pages 15-19 before proceeding.

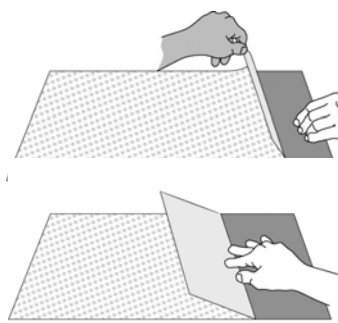
**1**

Wipe the wall, removing dust and any obvious contaminants.



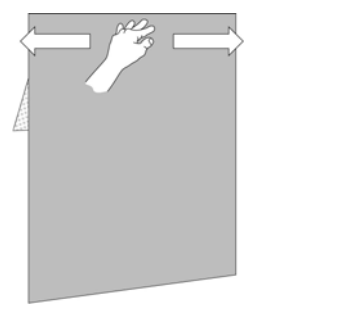
**2**

Lay the graphic image side down on a flat surface. Pull back about 6 inches of the liner. Sharply crease the liner.



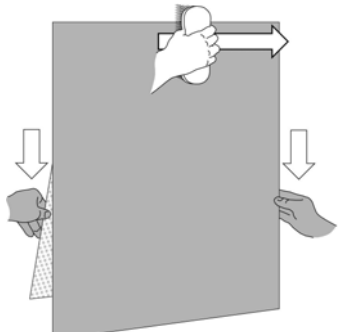
**3**

Align the graphic on the wall and use finger pressure to tack it in place.



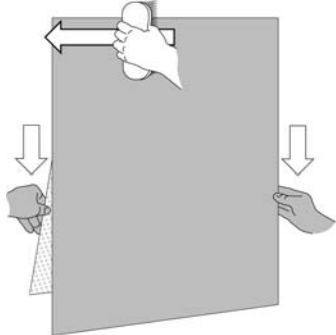
**4**

Brush from the center to the right edge.



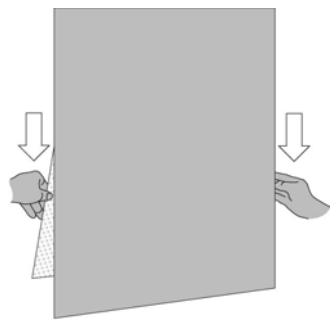
**5**

Return to the center and brush to the left edge.



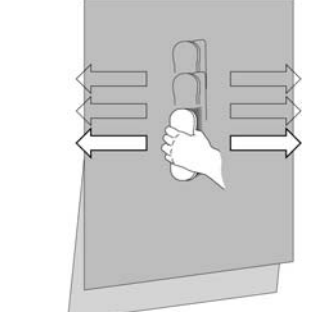
**6**

Pull the liner down as needed, using two hands.



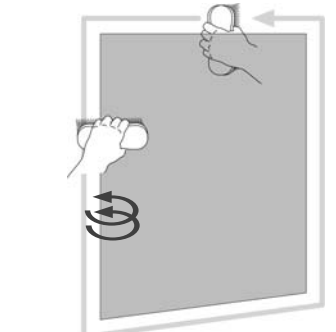
**7**

Move the brush down a couple of inches and continue stroking right and left, pulling the liner down as needed. Repeat to the bottom.



**8**

Re-brush the outer 3 inches of the entire graphic, using a small circular motion, to ensure good edge adhesion.



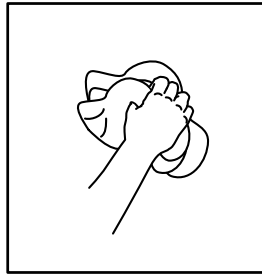
## SMOOTH Indoor Walls - Application Method 2: Horizontal w/Tape

Orientation: Horizontal (*graphic is wider than it is tall*)  
Imaging Method: Inkjet printed, Screen printed, Electrostatically printed, Offset printed

Please review the instructions on pages 15-19 before proceeding.

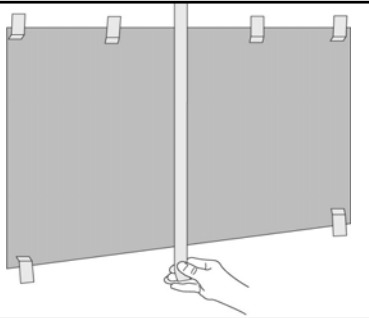
**1**

Wipe the wall, removing dust and any obvious contaminants.



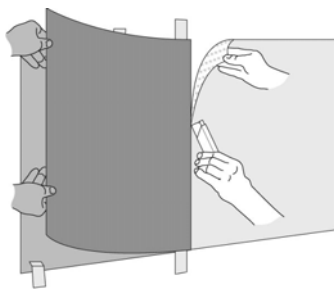
**2**

Align the graphic on the wall, and tape it in place as shown. Place a long strip of masking tape as shown.



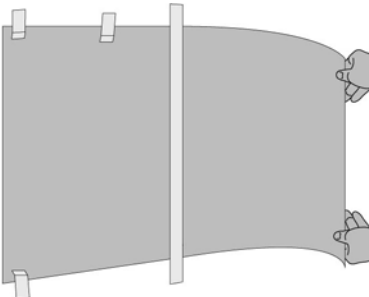
**3**

Remove the short strips of tape from one side. Pull the film away from the liner all the way to the long strip of tape. Carefully cut off the liner.



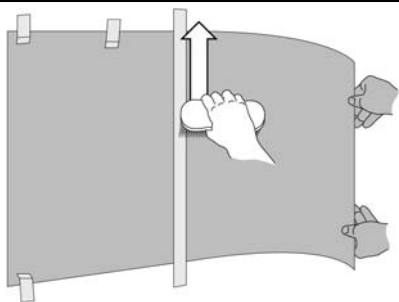
**4**

Allow the part of the graphic near the center tape to lie against the wall. Gently hold the rest of the graphic away from the wall.



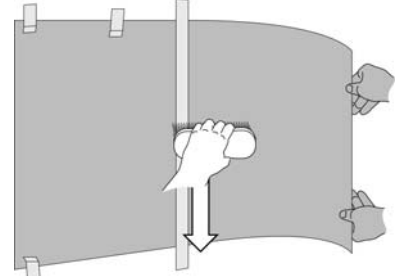
**5**

Begin at the center and brush up.



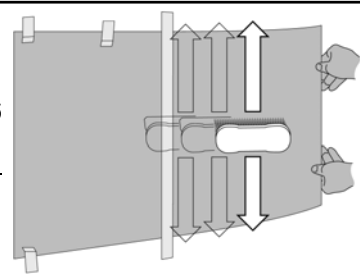
**6**

Return to the center, and brush down.



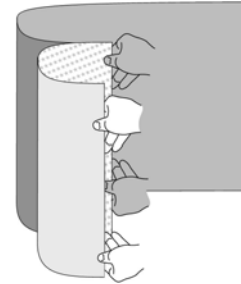
**7**

Move the brush about two inches left. Repeat Steps 6 and 7 across the graphic, allowing more of the graphic to lay against the wall as you work to the left.



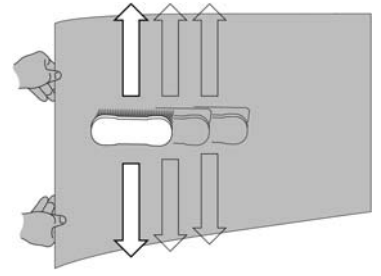
**8**

Remove the remaining masking tape. Lift the right side of the film and remove the remaining liner.



**9**

Repeat Steps 5, 6, and 7 across the other side of the graphic.



**10**

Re-brush the outer 3 inches of the entire graphic, using a small circular motion, to ensure good edge adhesion.

