

THINLINE VERTICAL SLIDING UNIT PARTS LIST FOR 2 PANEL UNIT

The Vertical Sliding Unit is shipped knocked down in the following components.

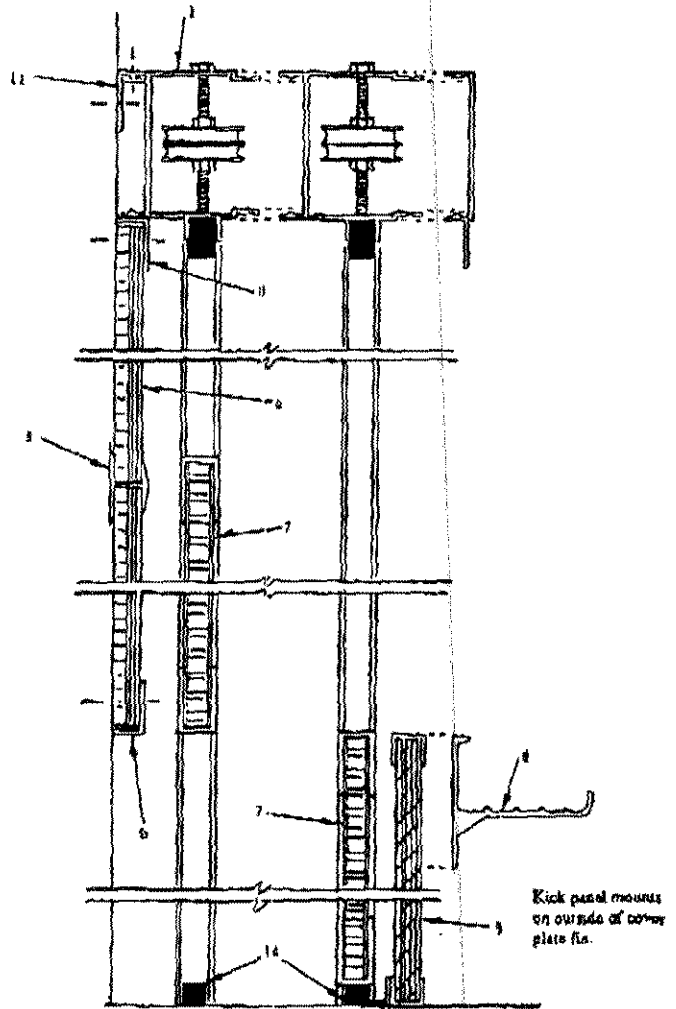
- # 1. Head housing (top section).
- # 2. Left jamb housing.
- # 3. Right jamb housing.
- # 4. Fixed back panel.
- # 5. Joint strip (required if back panel is over 4'0" high).
- # 6. Back panel trim at head, jamb and sill.
- # 7. Sliding panel.
- # 8. Chalktrough.
- # 9. Kick panel (floor mounted units only).
- Kick panel for floor mounted units are not furnished by Claridge unless ordered as an optional.
- # 10. Kick panel bottom mounting angle screwed to floor (floor mounted units only).
- # 11. 2" mounting clip angles.
- # 12. Counterweights (2 per panel).
- # 13. Kick panel trim at jambs (floor mounted units only).
- # 14. Rubber bumpers screwed to floor (floor mounted units only).
- # 15. Bottom housing (wall mounted units only).

INSTALLATION INSTRUCTIONS THINLINE VERTICAL SLIDING UNITS

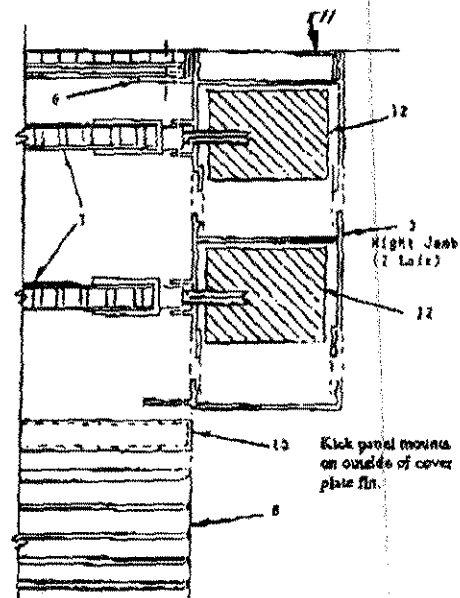
Note: For two and three track units the tracks must be separated and installed one track at a time per following steps.

- Step 1:** Fasten head housing (#1) to wall with 2" mounting clips (#11) 12" on centers. Use 1" pan head screws to wall; 1/2" pan head screws to fasten housing to clips.
- Step 2:** Fasten one jamb housing (#2 left) or (#3 right) to wall and head housing (#1) with 2" mounting angle clips 12" on centers (#11). Use 1" pan head screws to wall; 1/2" pan head screws to fasten housing to clips. Jamb housing must be installed plumb.
- Step 3:** If unit is wall-mounted type, fasten bottom housing to wall and upright with 2" mounting clips spaced 12" on centers. Part (#15) illustrated on opposite side of sheet.
- Step 4:** Insert back panel (#4) from open side of unit and fasten back panel (#4) to wall through back panel trim (#6) with 1-1/2" pan head screws. If back panel is over 4'0" high, a joint strip (#5) is required.
- Step 5:** Set sliding panels (#7) into unit in lowered position.
- Step 6:** Attach cables to panels (#7) on jamb housings (#2 or 3) of unit that is attached to wall. See cable travel layout illustration on opposite side of sheet.
- Step 7:** Position remaining upright (#2 or 3). Attach counterweight cables to sliding panel (#7) on remaining jamb housing (#2 or 3) with cable clamps in hardware package.
- Step 8:** Fasten loose upright (#2 or 3) to head housing (#1).
- Step 9:** Install rubber bumpers (#14 - Floor Mounted Units only) to floor at each end of sliding panels (#7). Bumpers at head housing are factory-installed.
- Step 10:** Floor Mounted Units Only - Install kick panel (#9 optional or by others), by inserting panel side trim (#13) over edges of kick panel jamb. Fasten bottom of kick panel into continuous mounting angle (#10) at floor through bottom face of kick panel. Screw trim (#13) to bottom edge of (#2 or 3) with 1/4" pan head screws.

See reverse side for supplemental drawing of Head Housing and Wall Mounted Details.

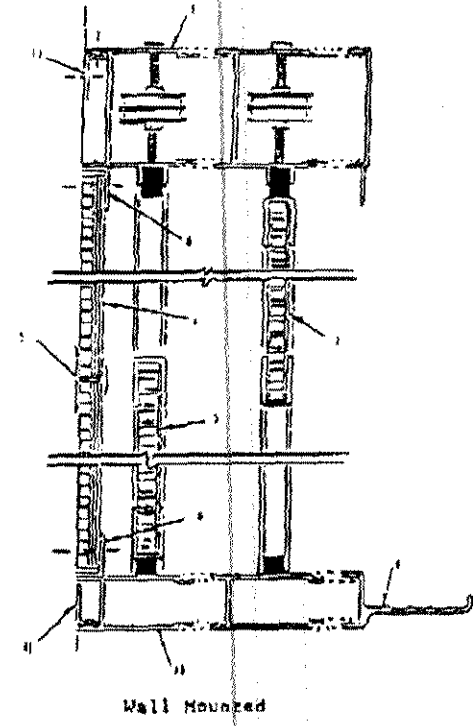
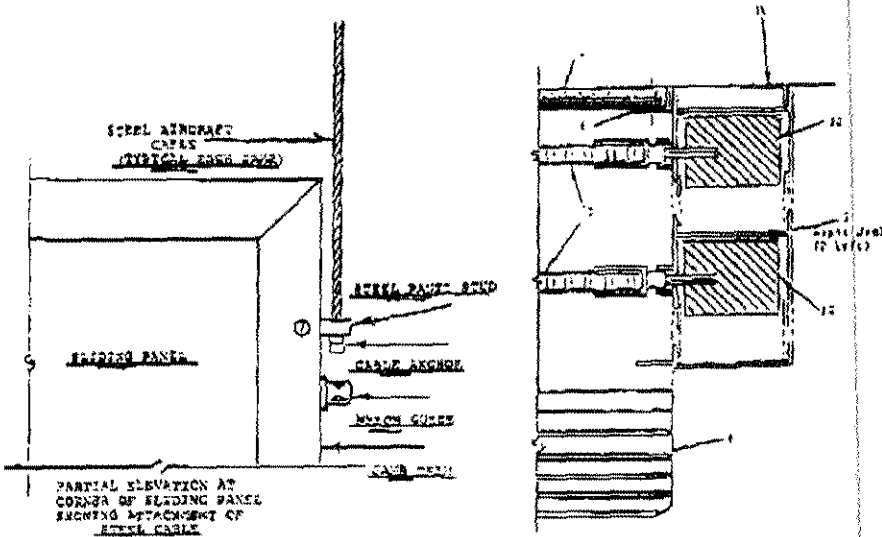


Floor Mounted



CLARIDGE PRODUCTS AND EQUIPMENT, INC.
 P. O. BOX 910, HARRISON, ARKANSAS 72602-0910
 PHONE: 501-743-2200
 FAX: 501-743-1908

THINLINE VERTICAL SLIDING UNIT DETAILS



SUPPLEMENT DRAWING OF WHEEL HOUSING

