

Indoff
140 WEST WYND TERRACE
MIDDLETOWN, CT 06457
(860) 632-2026
FAX (860) 632-2028
www.ahutton.com

INSTALLATION INSTRUCTIONS FOR LCS DELUXE UNITS WITH ALUMINUM TRIM

Claridge Factory Built Units are inspected and are approved as being without damage at the time of shipment. On arrival, carefully examine each carton for damage. If damage is visible, have driver clearly note that fact on your delivery receipt and file claim immediately. Immediately after delivery, open all cartons (save cartons) and inspect for concealed damage. If damage is discovered, call carrier and request inspection. Failure to report concealed damage within 15 days will result in the carrier denying your claim. Claridge will not be responsible for any damage claims if an inspection report is not secured and a claim not filed within the time limit.

NON-COMPLIANCE WITH STORAGE AND INSTALLATION INSTRUCTIONS MAY CAUSE TROUBLE. PLEASE FOLLOW INSTRUCTIONS CAREFULLY TO BE ASSURED OF A GOOD INSTALLATION.

STORING INSTRUCTIONS

Claridge LCS Deluxe Units with Aluminum Trim have wood fiber cores or backing materials, and will, under certain climatic conditions, show slight dimensional changes. The following instructions must be followed to guarantee they will remain flat and true.

1. After opening and inspecting boards for damage, return to original crates or cartons for storage and do not uncrate until they are to be erected. Uncrated, they must not be allowed to lean against the wall or other objects and must not lay on the floor for any length of time.
2. Do not erect boards on damp walls or erect in damp and humid weather without heat in the building.
3. Clean off all finger prints, dirt, etc. at once.

STEP BY STEP INSTRUCTIONS FOR INSTALLING MOUNTING ANGLES

NOTE: Sections of angle clips to be anchored to wall at top of board are punched with 3/16" slotted holes.

STEP ONE: Attach bottom mounting angle clip to wall with chalktrough at architect's specified height. (See illustrations). Caution should be exercised to assure that the hangers are level. **INSTALL ANGLE CLIPS 24" O.C.** (Except, end clips should be 3" in from end of board.)

STEP TWO: Attach top mounting hangers (with slotted side to wall) maintaining the board height plus 1/8" clearance between top and bottom angle, which will put the wall fastener in the bottom of the slot. (See illustration.) **NOTE:** Snug down wall fastener only. **DO NOT TIGHTEN COMPLETELY.**

STEP THREE: Install board by inserting bottom of board on top of bottom mounting angle. Press board firmly to wall and install screws furnished through angle into board trim at bottom of board only.

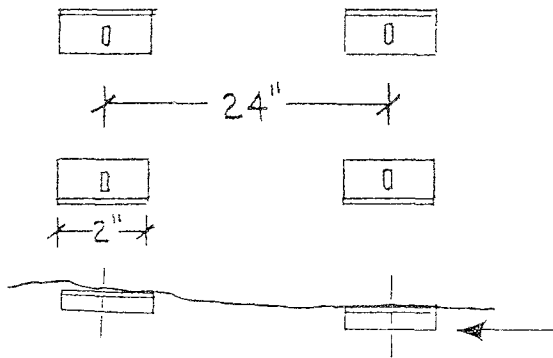
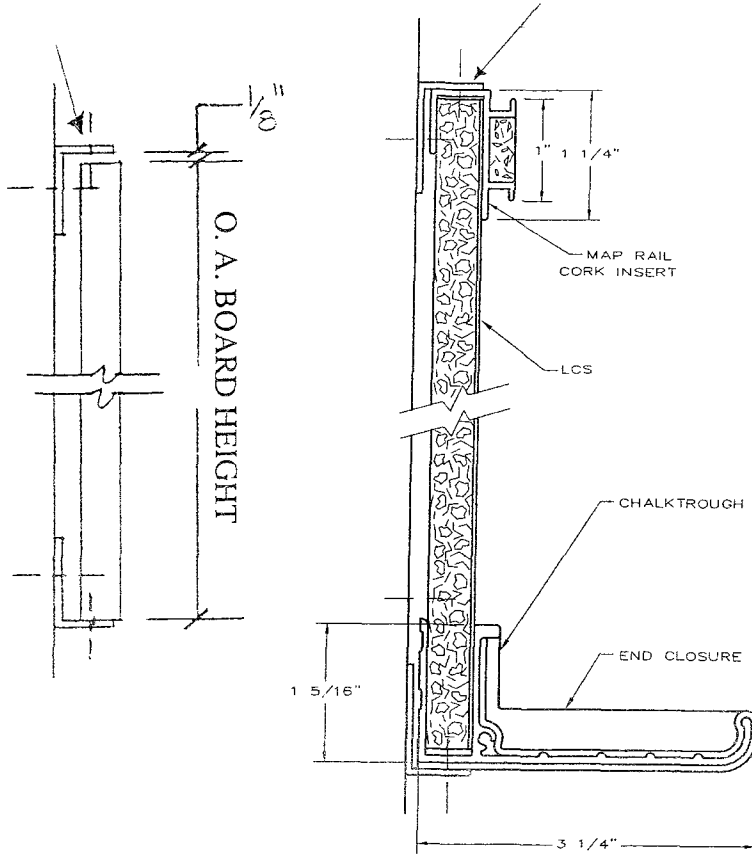
STEP FOUR: Using a wooden block, tap top mounting angle down tight against board trim and install screws as in Step Three.

SEE REVERSE SIDE FOR ILLUSTRATIONS

①

LCS DELUXE UNITS WITH ALUMINUM TRIM

2" MOUNTING ANGLES 24" O.C. TOP AND BOTTOM



IRREGULAR WALL LINE
INCORRECTLY MOUNTED



SHIM TO HIGH POINTS
CORRECTLY MOUNTED